

SUMO sumo1.com **TRIO**



2.5m and 3.0m machines

2013 Operator Manual and Parts List

SUMO
UK LIMITED
Agricultural Machinery Manufacturers

www.sumo1.com

Redgates
Melbourne
York
YO42 4RG
Tel. 01759 319900
Fax. 01759 319901

1.0 Registration

To activate your SUMO Warranty, you must complete this page and send it back to us at:

Sumo UK Ltd
Redgates
Melbourne
York
YO42 4RG
Tel. 01759 319900
Fax. 01759 319901

(NO REGISTRATION = NO WARRANTY)

SUMO SERIAL No:
For your own records.



Sumo Trio Registration Document

NAME:

ADDRESS:

Postcode:

Telephone Number:

DATE:

SUMO SERIAL No.
(Serial plate on
side of headstock)

DEALERSHIP
NAME AND
BRANCH:

COMMENTS:



In order to obtain your free pair of Sumo overalls and baseball cap please fill in this form and send back to us at:

Sumo UK Ltd
Redgates
Melbourne
York
YO42 4RG
Tel. 01759 319900
Fax. 01759 319901



SUMO SERIAL No:

Overall size:
tick where applicable

Small (38 chest)	
Medium (42 chest)	
Large (46 chest)	
Extra large (50 chest)	
XX Large (54 chest)	
XXX Large (58 chest)	

NAME:

ADDRESS:



2.0 Summary

The SUMO Trio, a unique one pass soil conditioning machine designed and manufactured in Britain, comprising as its name suggests of three parts, each of these tuned to comprehensively create the finish required.

Firstly

The ultra low draught Subsoiler legs are mounted in a staggered pattern on a heavy duty frame, adjusting to a maximum depth of 400mm (at the point) via pins. Due to the design of the legs and their mounting, when the Auto-Reset system allows the leg to trip, both the first and second rows of legs trip in a fashion which allows the point to come clear of the ground and to pass by the obstacle. These legs feature quick change points and shins.

Secondly

A double row of 500mm concave discs, mounted on independently suspended arms giving a shock-proof durable system with quality low maintenance triple sealed taper roller bearings. Double mounting gives unrivalled performance when working in adverse conditions.

Finally

The patented Multipacker is uniquely designed to fulfil a number of criteria, comprising, 508mm x 10mm tube mounted on heavy duty quality bearings fitted with notched cutting/ drive rings to keep turning in arduous conditions, giving a total diameter of 660mm. The ring shoulders feature a convex shape adjacent to the barrel, creating consolidation and cracking even on the top of the ridge. Further to this is the ability to unbolt every individual packer quadrant for replacement without having to use any heat or cutting equipment. All these features make a packer which presses and firms to a higher quality with a lower power requirement than any other packer available.

Before using the SUMO Trio it is absolutely necessary that you read this Operators Manual and Safety Instructions attentively.

Specifications, descriptions and illustrations in this brochure are accurate, as known, at the time of publication but may be subject to change.

Table of Contents

Contents

1.0 Registration	...Page 1
2.0 Summary	...Page 3
3.0 Safety	...Page 5
3.1 Qualification & Training	...Page 5
3.2 General Safety	...Page 6
3.3 Special Safety Instructions	...Page 6
3.4 Risk Assessment	...Page 7
4.0 Operation & Adjustment	...Page 8
4.1 Operation	...Page 8
4.2 Adjustment	...Page 8
4.3 Auto Reset Hydraulic Circuit	...Page 9
5.0 Maintenance	...Page 10
5.1 Spares	...Page 10
5.2 Winter Storage	...Page 10
6.0 Parts & Assembly	...Page 11
6.1 Twin Disc Unit	...Page 11
6.2 Single Disc Unit	...Page 12
6.3 Packer Bearing Assembly	...Page 13
6.4 Packer Quadrant Assembly	...Page 14
6.5 Packer Depth Control	...Page 15
6.6 Scraper Assembly	...Page 16
6.7 End Scraper Assembly	...Page 17
6.8 Auto Reset Assembly	...Page 18
6.9 Shear Bar Assembly	...Page 19
6.10 Trio Leg	...Page 20
6.11 Alternate Trio Leg	...Page 21
6.12 Soil Retainer Assembly	...Page 22
6.13 Light Assembly	...Page 23
6.14 Main Frame	...Page 24
6.15 Disc Frame	...Page 26
6.16 3m Hydraulics	...Page 28
6.17 2.5m Hydraulics	...Page 30
6.18 Stickers	...Page 31

3.0 Safety

This manual contains basic advice which should be observed during setting-up, operation and maintenance. Therefore, this operating manual must be read by the personnel concerned prior to starting up, using the machine and be available at all times.

If safety instructions are not complied with, then this can lead to the risk of injury to yourself and others as well as damage to the environment or the machine. Non-compliance to the safety instructions can also lead to claims for damages becoming invalid.

3.1 Qualification and Training

- Ensure that only reliable, authorized personnel work on or with the machine. Statutory minimum age limits must be observed.
- Employ only trained or instructed staff; the individual responsibilities of the personnel concerning operation, setting up, maintenance and repair must be clearly established.
- Define the machine operators' responsibilities – also with regard to observing traffic regulations. The operator must have the authority to refuse any instructions issued by third parties, which contravene safety.
- Persons undergoing training or instruction or taking part in a general training course should not be allowed to work on or with the machine unless they are under the constant supervision of an experienced person.
- The use of spare parts, accessories and ancillary equipment not supplied and/or not approved by SUMO could have detrimental effects to the construction of the SUMO machine or on its functions and hence impair the active and/or passive driving and/or operational safety (accident prevention).
- SUMO shall not be responsible for any damage caused by the use of spare parts, accessories and ancillary equipment not supplied and/or approved by SUMO.
- Conversions of or modifications to the machine may only be carried out after consultation with SUMO.

3.2 General safety

- Warning signs and other notices on the machine provide important information for the safe operation. Observing them will serve your safety.
- Before starting work, make yourself familiar with all the equipment and controls as well as their functions.
- The user should wear close-fitting clothing.
- Keep the machine and in particular the bearings clean to avoid risk of fire.
- Check around the machine before moving off or starting up (watch out for children!). Make sure you have adequate all-round visibility.
- Always match your speed to the local conditions. Avoid sudden turning manoeuvres when driving uphill or downhill or when travelling across a slope.
- Observe the respective regulations when using public roads.
- Take into account the wide overhang and/or the sideways force acting on the machine when turning or negotiating curves.

3.3 Special safety instructions

- Take extreme care when hitching up or unhitching machine to/from the tractor.
- Never allow persons to stand between the tractor and the machine unless the tractor is secured against rolling away by means of parking brake and/or wheel chocks.
- During transport, secure the packer (using both pins) to prevent shock loading when encountering road undulations. Ensure stands are raised to their transport position.
- It is forbidden to allow persons to ride on the machine at any time. A safe distance should be maintained from the machine by observers when in work.
- Driving, steering and braking characteristics are influenced by mounted machines and ballast weights. Therefore, ensure adequate steering and braking ability.
- Never stand or work beneath suspended loads. **Ensure stands are in the lowered position before commencing maintenance work or adjustment on the legs/points.** Ensure ground conditions are able to support the weight of the machine on the stands.
- If there is a requirement to lift the Sumo Trio, appropriate lifting apparatus must be attached through the lifting eye in the centre of the machine. The 3m Trio weighs approximately 2800kg.
- When making adjustments to the machines care should be taken not to trap any body parts in moving or pivoting parts.

Top Link Pin

Due to the physical nature and weight distribution of the Sumo Trio **a category three enclosed ball top link** is highly recommended.

Due to the exaggerated loads experienced during normal working conditions, the top link pin is considered as a consumable part and should be checked for wear on a regular basis.

Model: Sumo Trio 3

Year: 2012



Date assessment written: 9th January 2012

Assessor: R. A. Hight

Notes: Ensure the operator manual is read and fully understood.

Purpose of machine: Primarily designed to cultivate soil prior to sowing crops.

Description of machine: A three-point-linkage mounted farm implement consisting of 3 major elements.

1. A row of subsoiler legs, hydraulically protected from obstructions.
2. A bank of two rows of rubber suspended cultivating discs.
3. A ridged roller.

All of the above is arranged in a heavy duty fabricated steel framework.

The Machine is designed to couple to a suitably powered tractor.

Hazard identified in using machine	Who might be harmed	Risk evaluation/level 1-5	Precautions in place	Further action required
Machine collision while in transport.	Operator, members of the public	2 - low_med	Tail lights, reflectors, narrowing soil deflectors	Take care when using in both field and road situations. Maintain good visibility at all times.
Trapped fingers during leg depth position change.	Operator	1 - low	Warnings, maintenance stands	Observe warning signs, maintain safe distance from moving parts, wear gloves. Change leg position from underneath machine. Ensure all four stands are down.
Risk of crushing	Operator	4 - med_high	Maintenance stands, both front & rear	Take extreme care when working on legs, changing depth, replacing points etc, make sure stands are down and the machine is on a suitable firm piece of land. Ensure tractor hydraulics are in good working order. Ensure tractor is safely positioned and the parking brake is engaged when coupling up to the Sumo implement
Falling from machine	Operator	2 - low_med	Most alterations and maintenance do not require the operator the climb on the machine. If a seeder is fitted, then steps and a handrail will also be fitted to allow access.	Lower the machine to the floor to allow access for greasing discs, checking bearings etc...

4.0 Operation and Adjustment

4.1 Operation

Before attaching a Trio to a tractor it is essential that the **stands are in the down position** to ensure a short top link when attached. Once attached securely to the tractor the machine can then be raised and the stands lifted out of the way. When the machine is removed from the tractor it is equally as important to leave the machine on the stands.

The top link should be as short as possible whilst remaining as close to horizontal as is achievable. It is important to ensure the machine is running level to allow the optimum level of soil disturbance as well as to prolong the life of the wearing parts.

Changing the points on the Trio must only be done on level ground. When it is deemed necessary to change the points, the stands should be lowered to the static position and other appropriate jacks, stands and chocks put into position in sensible locations. To avoid the risk of sinking and potential injury it is important to **only change the points where ground conditions permit**, i.e. solid concrete, tarmac etc. Care should be taken to ensure the Trio is firmly and safely held before changing the points. The tractor engine must be turned off with the parking brake applied.

Bearings should be greased (see 5.0 Maintenance); stands must be in the raised position and all relevant pins in the correct holes prior to commencing work.

The subsoiler legs can be lifted and lowered and the end of the field if so desired. If the hoses are plugged into the tractor then it is simply a matter of operating the spool valve from the cab up/down. When the legs are put back into their work position, the spool should be returned to float position to ensure any tractor back pressure is dumped. This allows the hydraulic auto-reset valve to function correctly.

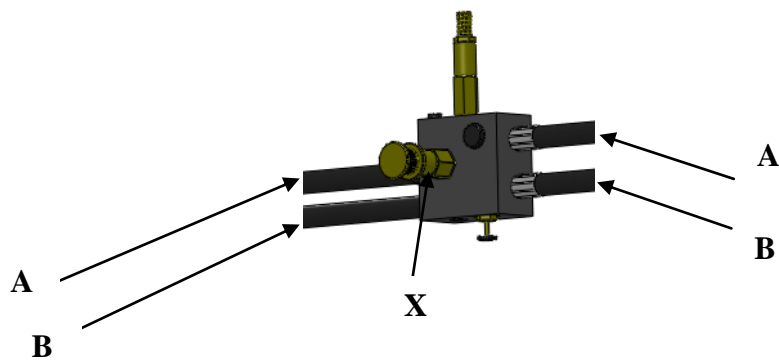
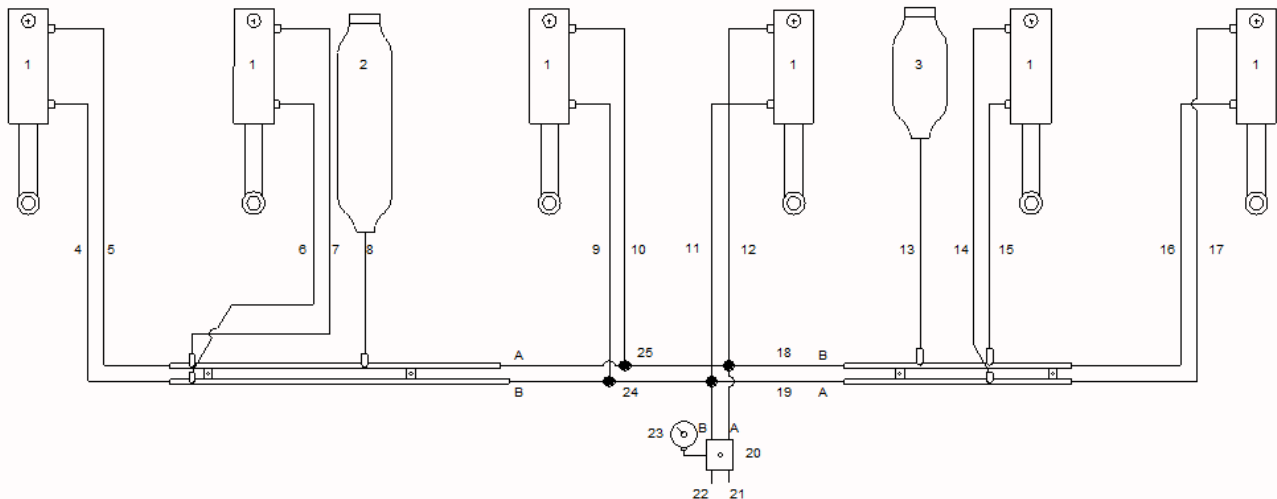
Forward working speed should be governed by the local conditions as well as the finish produced by the Sumo Trio.

4.2 Adjustments

Depth adjustment of the subsoiler legs at the front of the Trio is achieved by removing the lynch clip and depth pin then lifting or lowering the leg and replacing the pin in the appropriate hole. The maximum leg depth is 400mm. Keep fingers clear of depth holes.

To adjust the disc working depth, the weight must first be taken off the packer arms before the lynch pins and depth pins are removed. A new depth position can then be selected by replacing the pins in higher or lower holes. The disc unit slices, mixes and cultivates the top 50 - 100mm of soil.

4.3 Auto Reset hydraulic circuit



- 1) To lift the legs up and out of the work position; pressurize line B (the lower of the two hoses entering the valve block & marked "B" on the valve itself). The legs will lift as oil is returned to the tractor through Line A.
- 2) To lower the legs back down and into the work position; pressurize line A, the legs will lower one by one. Keep pumping until all of the legs come to a stop at the end of their stroke. Keep pumping for a few more seconds and the two lines will then pressure up. Keep an eye on the gauge on the right hand side of the machine as this displays the leg trip resistant pressure. The system needs then to be put into the "float" or pressureless state between the tractor and the valve so that any back pressure from the tractor does not affect the preset valve pressures. Putting the system into "float" means the factory set pressure readings of 80bar on the full bore side of the ram (gauge on RHS of machine) and 20bar on the rod side of the ram. This is unless of course they have been adjusted to suit local conditions.
- 3) To increase the trip resistance of the legs – the knob marked X should be wound in. The lift and lower process should then be repeated.

5.0 Maintenance

The packer bearings should be greased with one pump once a week and after washing off.

The disc bearings should be greased until old grease is forced out once a week when in normal use and after washing off.

The condition of the subsoiler legs, the points and the discs should be regularly monitored in order to maintain the most efficient use of the machine.

The condition and position of the packer scrapers should also be observed in order to prevent soil building up on the packer. Ensure the scrapers are not touching the packer though, as this will add rolling resistance as well as causing premature wear of the packer.

Hydraulic cylinders - Exposed chrome ram rods should also be lightly greased occasionally to prevent these valuable parts from rusting and causing costly oil leaks.

5.1 Spares

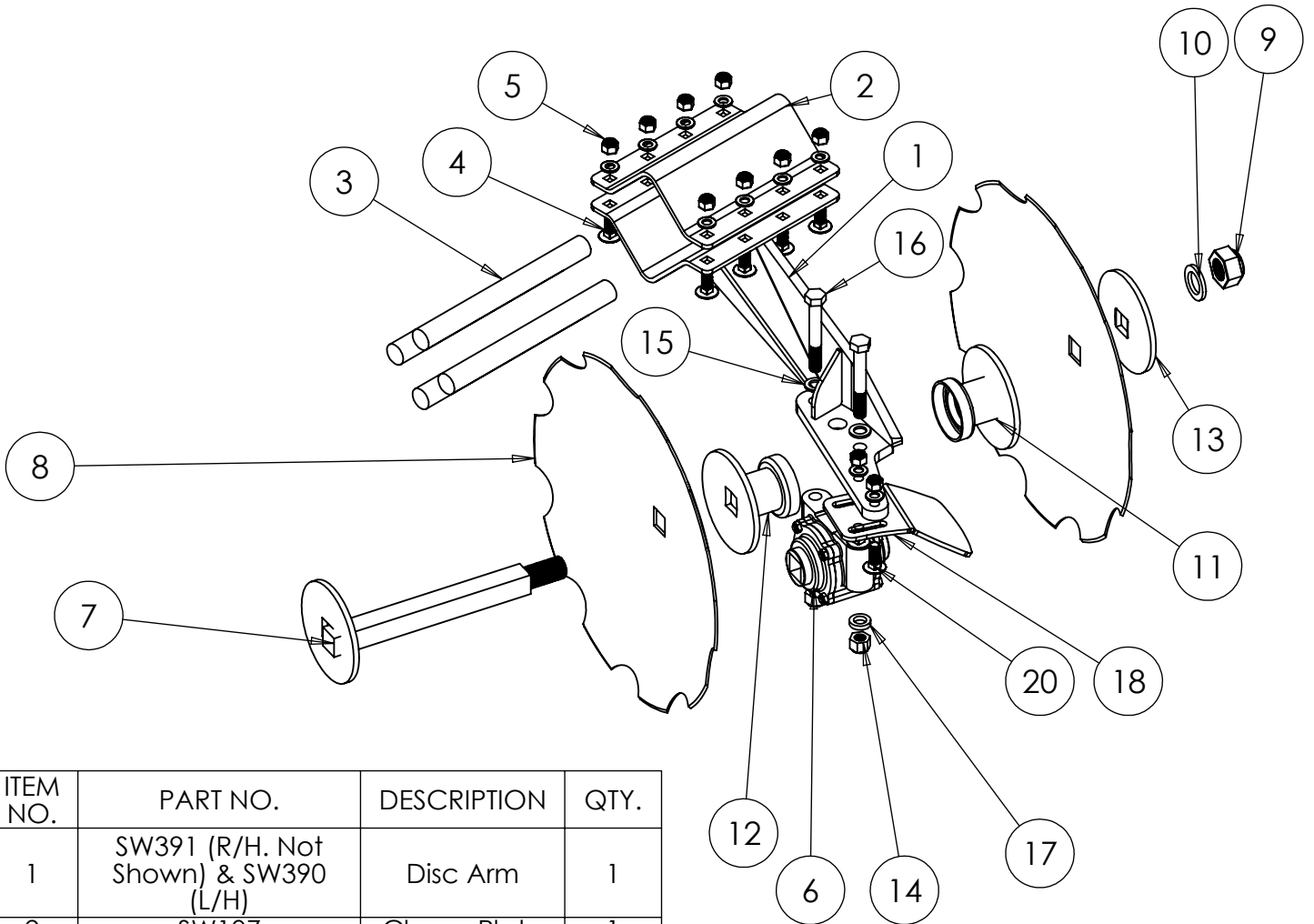
When ordering replacement parts please have your serial number, part numbers (listed in Section 6.0) and quantities at hand.

5.2 Winter storage

When machines are to be parked up for the winter period, correct storage techniques are an important part of protecting the machine to ensuring a hassle free season. When the machine has finished work it should be cleaned down and washed off to remove all traces of soil.

Following washing off, the packer bearings should be greased with one pump and the disc bearings should be greased until old grease is forced out. Other grease points are located on all rams on auto reset machines and these should receive two or three pumps of grease.

When the machine is parked up a note should be made of what wearing parts require replacing ready for the next seasons work. The wearing parts can then be ordered in time ready for the next season's work in good time to avoid delays when the machine is required earlier than expected!



ITEM NO.	PART NO.	DESCRIPTION	QTY.
1	SW391 (R/H. Not Shown) & SW390 (L/H)	Disc Arm	1
2	SW107	Clamp Plate	1
3	SWB103	Rubber	4
4	SWM1235CHSQ	M12 x 35 Cup Head Square	10
5	SWM12005	M12 Flanged Nut	10
6	SWB102	Bearing	1
7	SW101	Twin Disc Axle	1
8	SWB101	20" Scalloped Disc	2
9	SWM3004	M30 Nylock Nut	1
10	SWM30001	M30 Washer	1
11	SW103	Dust Cover and Convexed Disc	1
12	SW102	Dust Cover and Concaved Disc	1
13	SW108	Disc Axle Washer	1
14	SWM16004	M16 Nylock Nut	2
15	SWM16001	M16 Washer	2
16	SWM16120	M16 x 120 Bolt	2
17	SW1153	M16 Washer (Thick)	2
18	SW646	Disc Scraper	1
19	SWB184	18" Scalloped Disc (end of disc row, Not Shown)	1
20	SWM1240CHSQ	M12 x 40 Cup Head Square	2

DO NOT SCALE DRAWING

MACHINE/COMPONENT:

Sumo Trio

TITLE:

Twin Disc Unit Assembly



Drawings and design information found herein remain the sole property of Sumo UK Ltd. Reproductions may only be made with the permission of the owner.

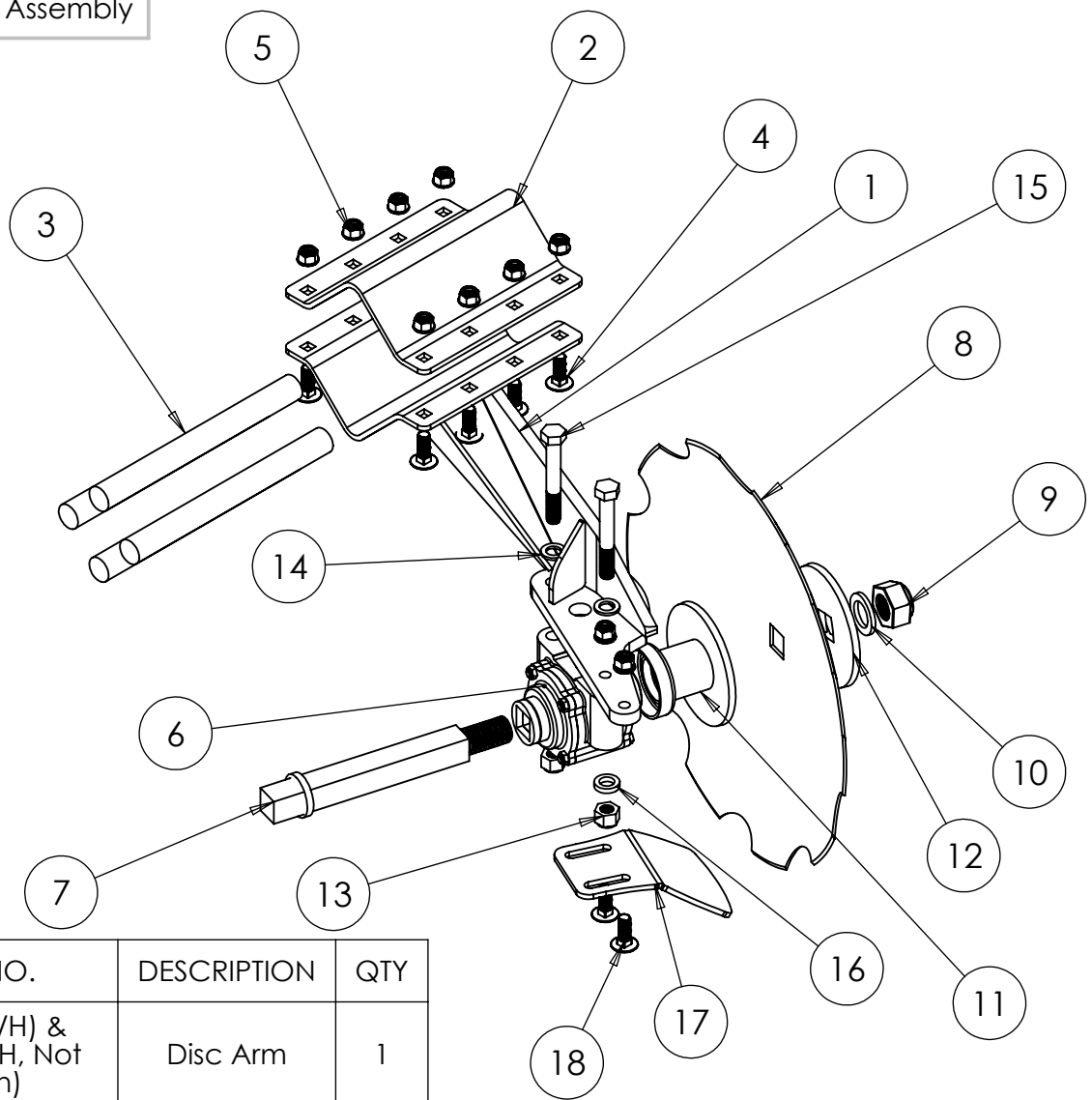
SCALE 1:20

REVISION:

DATE: 15/10/12

INITIAL: TW

8.2 Single Disc Unit Assembly



ITEM NO.	PART NO.	DESCRIPTION	QTY
1	SW390 (L/H) & SW391 (R/H, Not Shown)	Disc Arm	1
2	SW107	Clamp Plate	1
3	SWB103	Rubber	4
4	SWM1235CHSQ	M12 x 35 Cup Head Square	10
5	SWM12005	M12 Flanged Nut	10
6	SWB102	Bearing	1
7	SW109	Single Disc Axle	1
8	SWB101	20" Scalloped Disc	1
9	SWM30004	M30 Nylock Nut	1
10	SWM30001	M30 Washer	1
11	SW103	Dust Cover and Convexed Disc	1
12	SW108	Disc Axle Washer	1
13	SWM16004	M16 Nylock Nut	2
14	SWM16001	M16 Washer	2
15	SWM16120	M16 x 120 Bolt	2
16	SW1153	M16 Washer (Thick)	2
17	SW646	Disc Scraper	1
18	SWM1240CHSQ	M12 x 40 Cup Head Square	2

DO NOT SCALE DRAWING

MACHINE/COMPONENT:

Sumo Trio

TITLE:

Single Disc Unit Assembly



Drawings and design information found herein remain the sole property of Sumo UK Ltd. Reproductions may only be made with the permission of the owner.

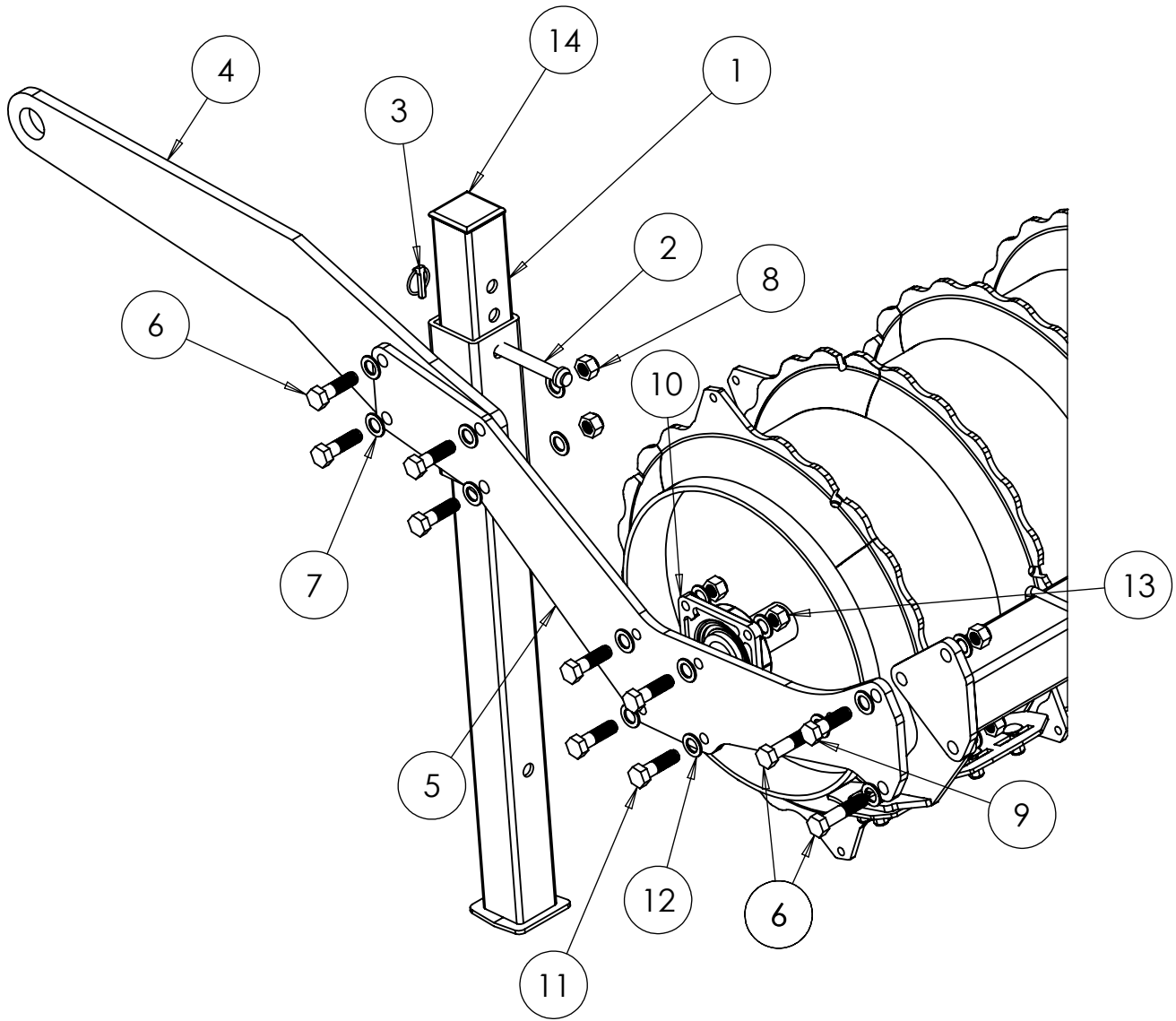
SCALE 1:8

REVISION:

DATE: 21/10/13

INITIAL: TW

6.3 Packer Bearing Assembly



ITEM NO.	PART NO.	DESCRIPTION	QTY.
1	SW117	Trio Stand	1
2	SW118	Stand Pin	1
3	SWB105	Lynch Pin	1
4	SW1051	Front Packer Arm	1
5	SW1052	Rear Packer Arm	1
6	SWM2070	M20 x 70 Bolt	6
7	SWM20001	M20 Washer	14
8	SWM20004	M20 Nylock Nut	7
9	SWM2060	M20 x 60 Bolt	1
10	SWB104	Packer Bearing	1
11	SWM1665	M 16 x 65 Bolt	4
12	SWM16001	M16 Washer	8
13	SWM16004	M16 Nylock Nut	4
14	SWB144	80mm Rubber Stand cap	1

DO NOT SCALE DRAWING

MACHINE/COMPONENT:

Sumo Trio

TITLE:

Packer Bearing Assembly



Drawings and design information found herein remain the sole property of Sumo UK Ltd. Reproductions may only be made with the permission of the owner.

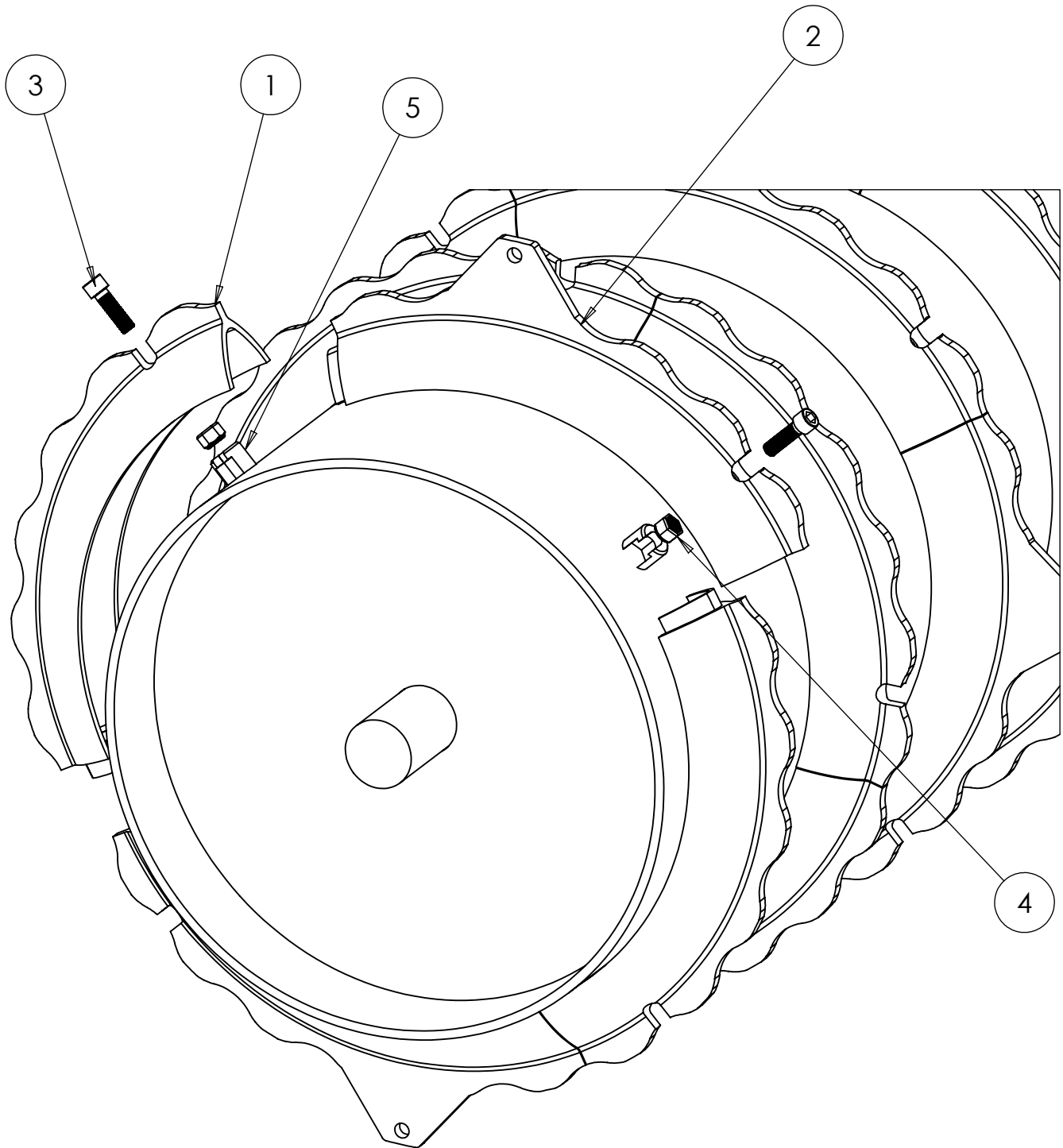
SCALE 1:10

REVISION:

DATE: 16/10/12

INITIAL: TW

6.4 Packer Quadrant Assembly



ITEM NO.	PART NO.	DESCRIPTION	QTY.
1	SWB331	Non-Lugged Packed Quadrant	24
2	SWB390	Lugged Packer Quadrant	24
3	SWM1240CH	M12 x 40 Cap Head	48
4	SWM12004	M12 Nylock Nut	48
5	SWB477	508 Packer Base	48

DO NOT SCALE DRAWING

MACHINE/COMPONENT:

Sumo Trio

TITLE:

Packer Quadrant Assembly



Drawings and design information found herein remain the sole property of Sumo UK Ltd. Reproductions may only be made with the permission of the owner.

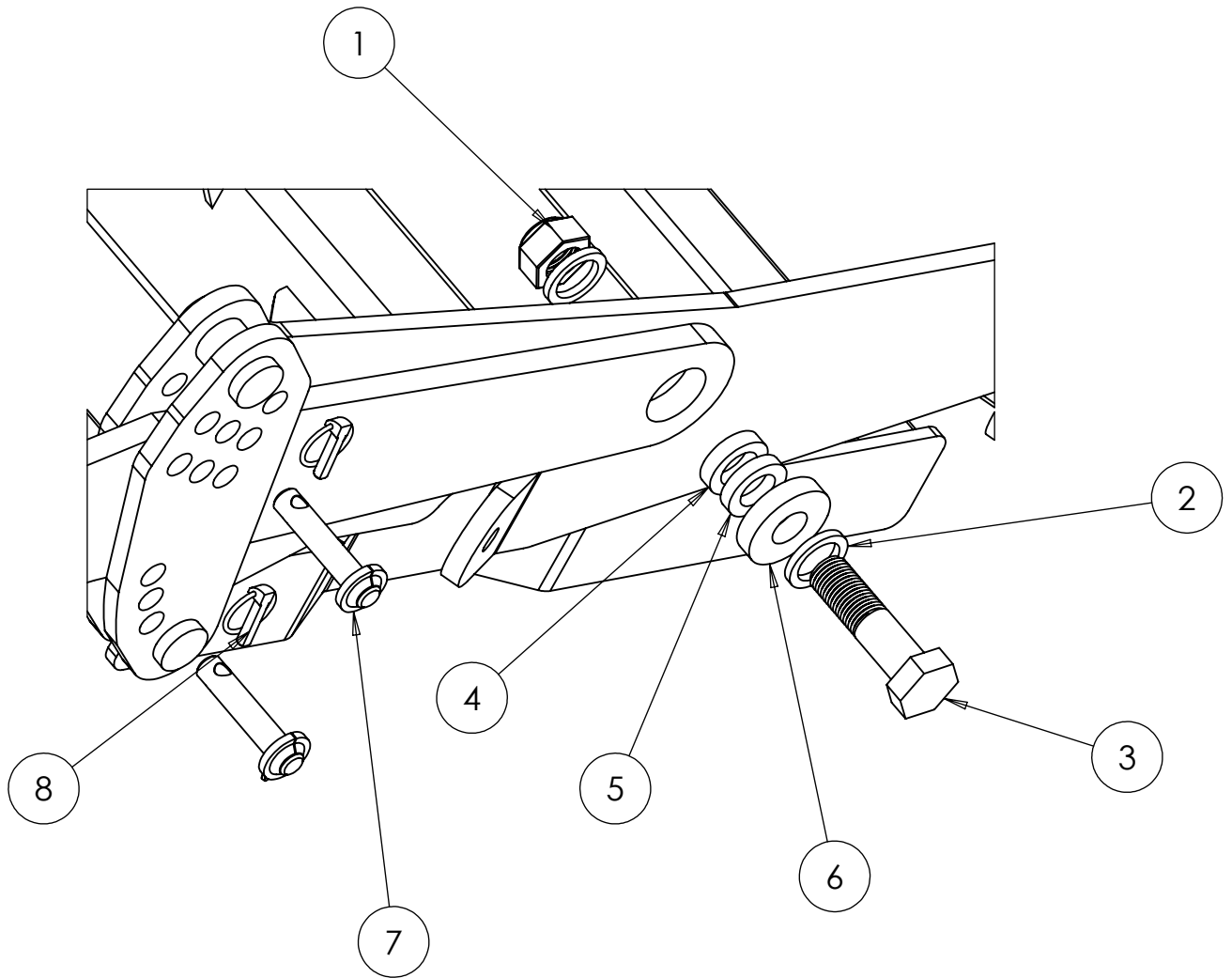
SCALE 1:5

REVISION:


DATE: 22/10/12

INITIAL: TW

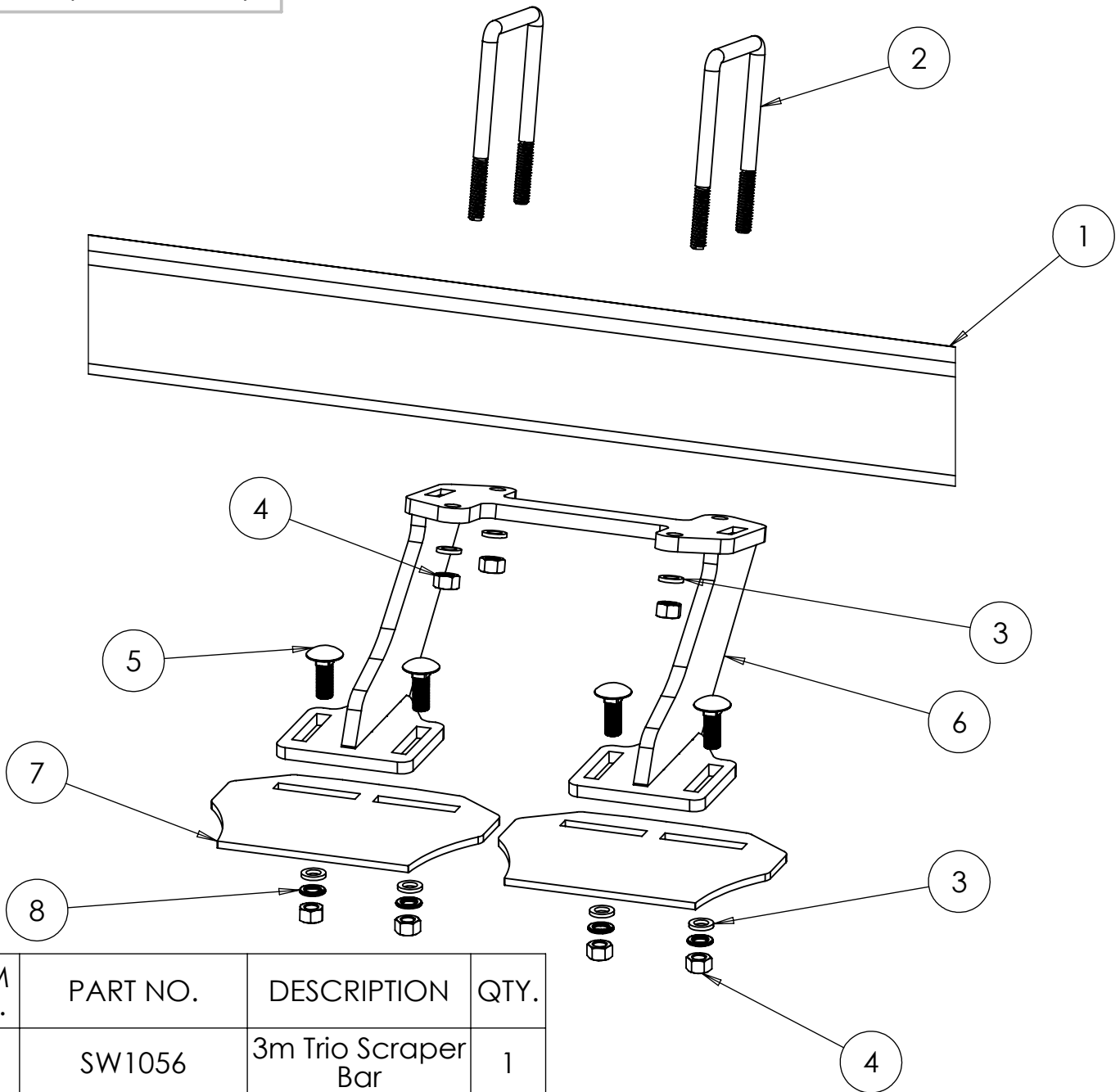
6.5 Packer Depth Control



ITEM NO.	PART NO.	DESCRIPTION	QTY.
1	SWM30004	M30 Nylock Nut	1
2	SWM30001	M30 Washer	2
3	SWM30110	M30 x 110 Bolt	1
4	SW723	12mm Small Spacer	1
5	SW722	10mm Small Spacer	1
6	SW129	15mm Large Washer	1
7	SW1367	Packer Depth Pin	2
8	SWB105	Lynch Pin	2

DO NOT SCALE DRAWING	
MACHINE/COMPONENT:	Sumo Trio
TITLE:	Packer Depth Control
	
Drawings and design information found herein remain the sole property of Sumo UK Ltd. Reproductions may only be made with the permission of the owner.	
SCALE 1:5	REVISION:
DATE: 22/10/12	INITIAL: TW

6.6 Scraper Assembly



ITEM NO.	PART NO.	DESCRIPTION	QTY.
1	SW1056	3m Trio Scraper Bar	1
2	SWM12100ub	M12 x 100 U-Bolt	2
3	SWM12001	M12 Washer	8
4	SWM12004	M12 Nylock Nut	8
5	SWM1235CHSQ	M12 x 35 Cup Head Square Bolt	4
6	SW1044	Double Scraper Hanger	1
7	SW1043	Scraper	2
8	SWM12002	M12 Spring Washer	4
9	SW1045	Triple Scraper Hanger (not shown)	1
10	SW1055	2.5m Scraper Bar (not shown)	1

DO NOT SCALE DRAWING

MACHINE/COMPONENT:

Sumo Trio

TITLE:

Scraper Assembly



Drawings and design information found herein remain the sole property of Sumo UK Ltd. Reproductions may only be made with the permission of the owner.

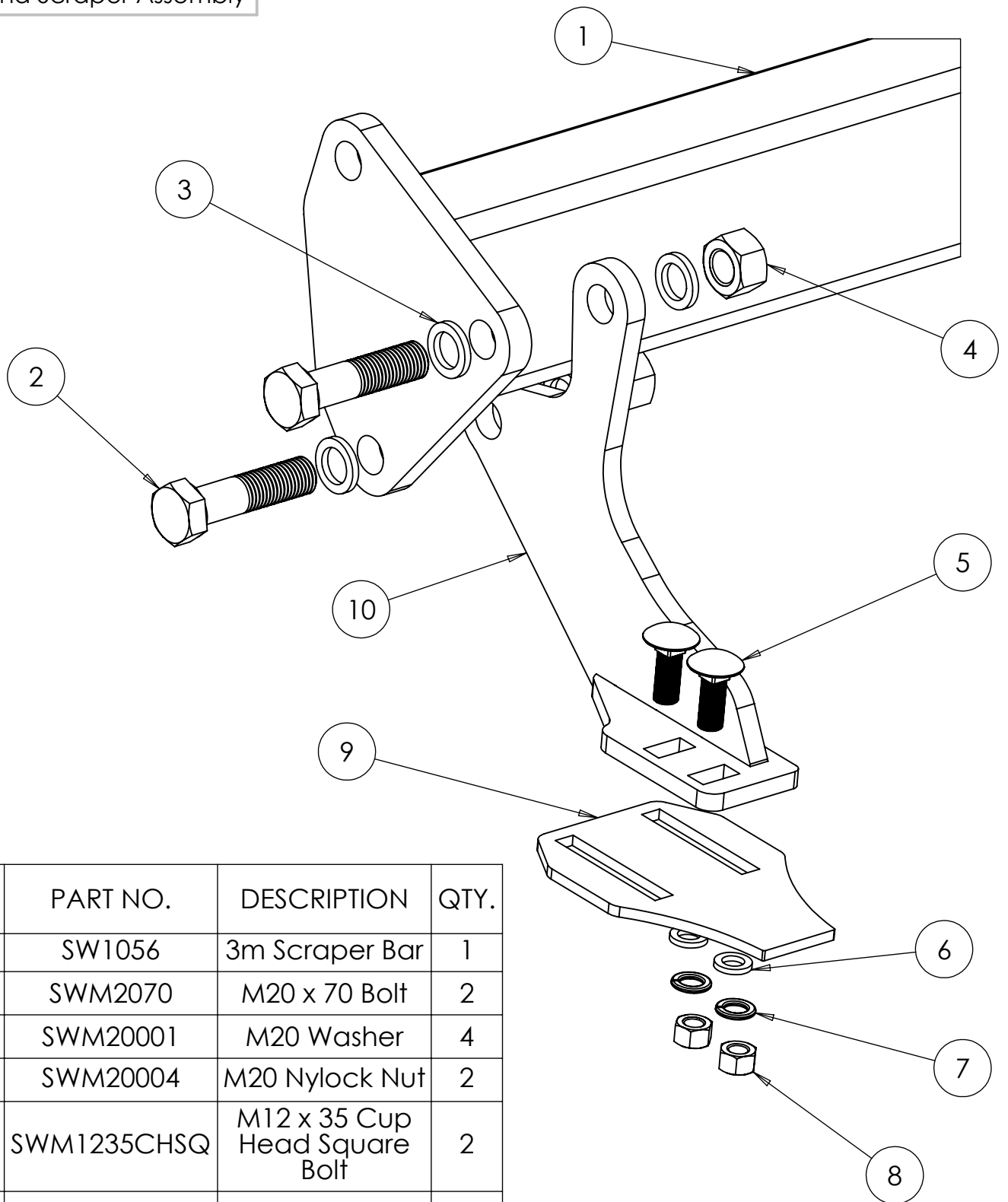
SCALE 1:5

REVISION:

DATE: 18/10/13

INITIAL: TW

6.7 End Scraper Assembly



ITEM NO.	PART NO.	DESCRIPTION	QTY.
1	SW1056	3m Scraper Bar	1
2	SWM2070	M20 x 70 Bolt	2
3	SWM20001	M20 Washer	4
4	SWM20004	M20 Nylock Nut	2
5	SWM1235CHSQ	M12 x 35 Cup Head Square Bolt	2
6	SWM12001	M12 Washer	2
7	SWN12002	M12 Spring Washer	2
8	SWM12004	M12 Nylock Nut	2
9	SW1053	End Scraper	1
10	SW1059	End Scraper Hanger (R/H)	1
11	SW1058	End Scraper Hanger (L/H) not shown	1
12	SW1055	2.5m Scraper Bar (not shown)	1

DO NOT SCALE DRAWING

MACHINE/COMPONENT:

Sumo Trio

TITLE:

End Scraper Assembly

SUMO

Drawings and design information found herein remain the sole property of Sumo UK Ltd. Reproductions may only be made with the permission of the owner.

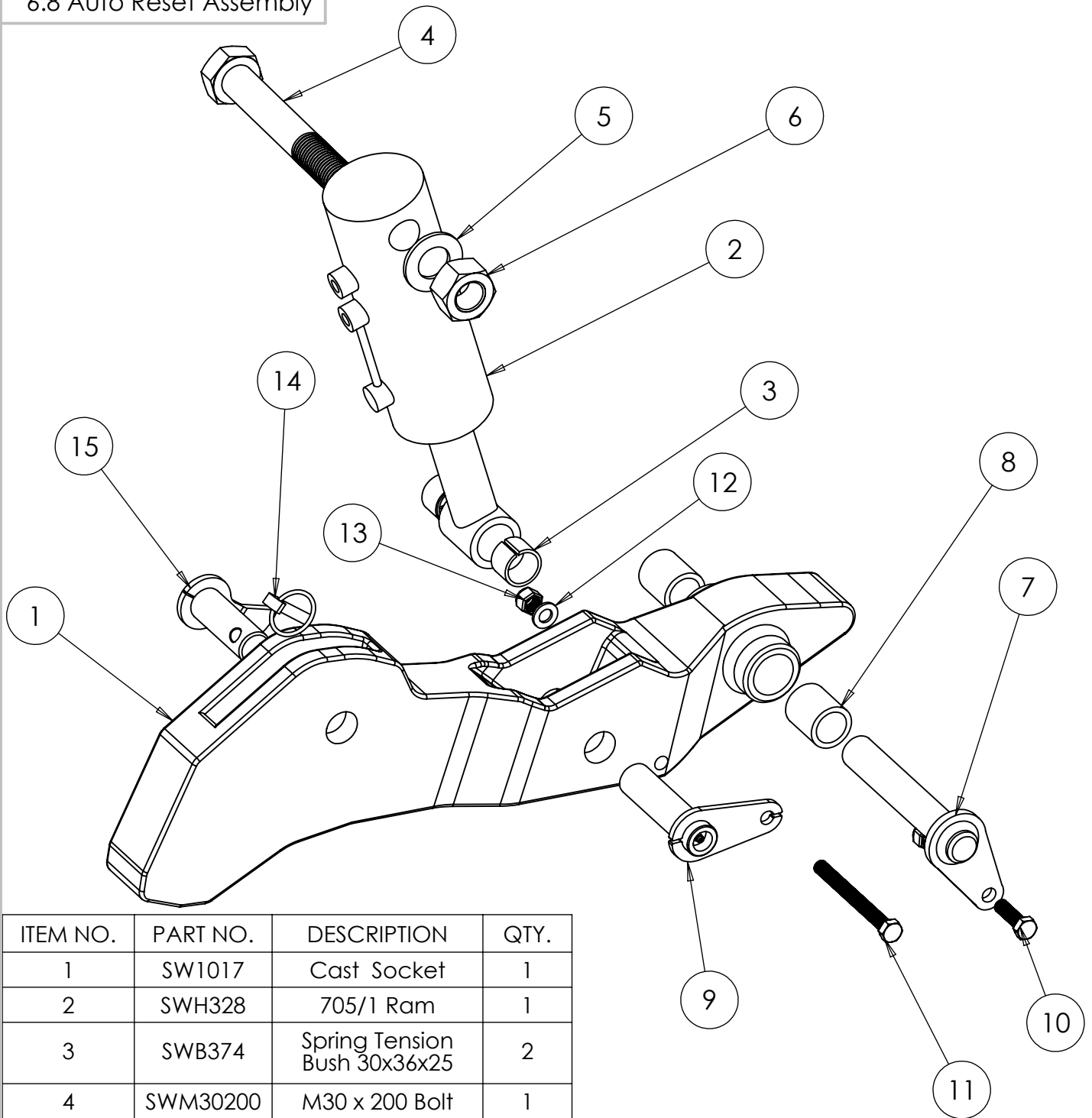
SCALE 1:3

REVISION:

DATE: 18/10/13

INITIAL: TW

6.8 Auto Reset Assembly



ITEM NO.	PART NO.	DESCRIPTION	QTY.
1	SW1017	Cast Socket	1
2	SWH328	705/1 Ram	1
3	SWB374	Spring Tension Bush 30x36x25	2
4	SWM30200	M30 x 200 Bolt	1
5	SWM30001	M30 Washer	1
6	SWM30004	M30 Nylock Nut	1
7	SW183	30mm x 170mm Tabbed Pin	1
8	SW188	30x40x45mm PB1 Bush	2
9	SW1192 & SW1192R	30mm x 120mm Tabbed Pin c/w Grease Nipple (L/H & R/H)	1
10	SWM1240	M12 x 40 Bolt	1
11	SWM12130	M12 x 130 bolt	1
12	SWM12001	M12 Washer	2
13	SWM12004	M12 Nylock Nut	2
14	SWB105	Lynch Pin	1
15	SW451	Leg Depth Pin	1

DO NOT SCALE DRAWING

MACHINE/COMPONENT:

Sumo Trio

TITLE:

Auto Reset Assembly



Drawings and design information found herein remain the sole property of Sumo UK Ltd. Reproductions may only be made with the permission of the owner.

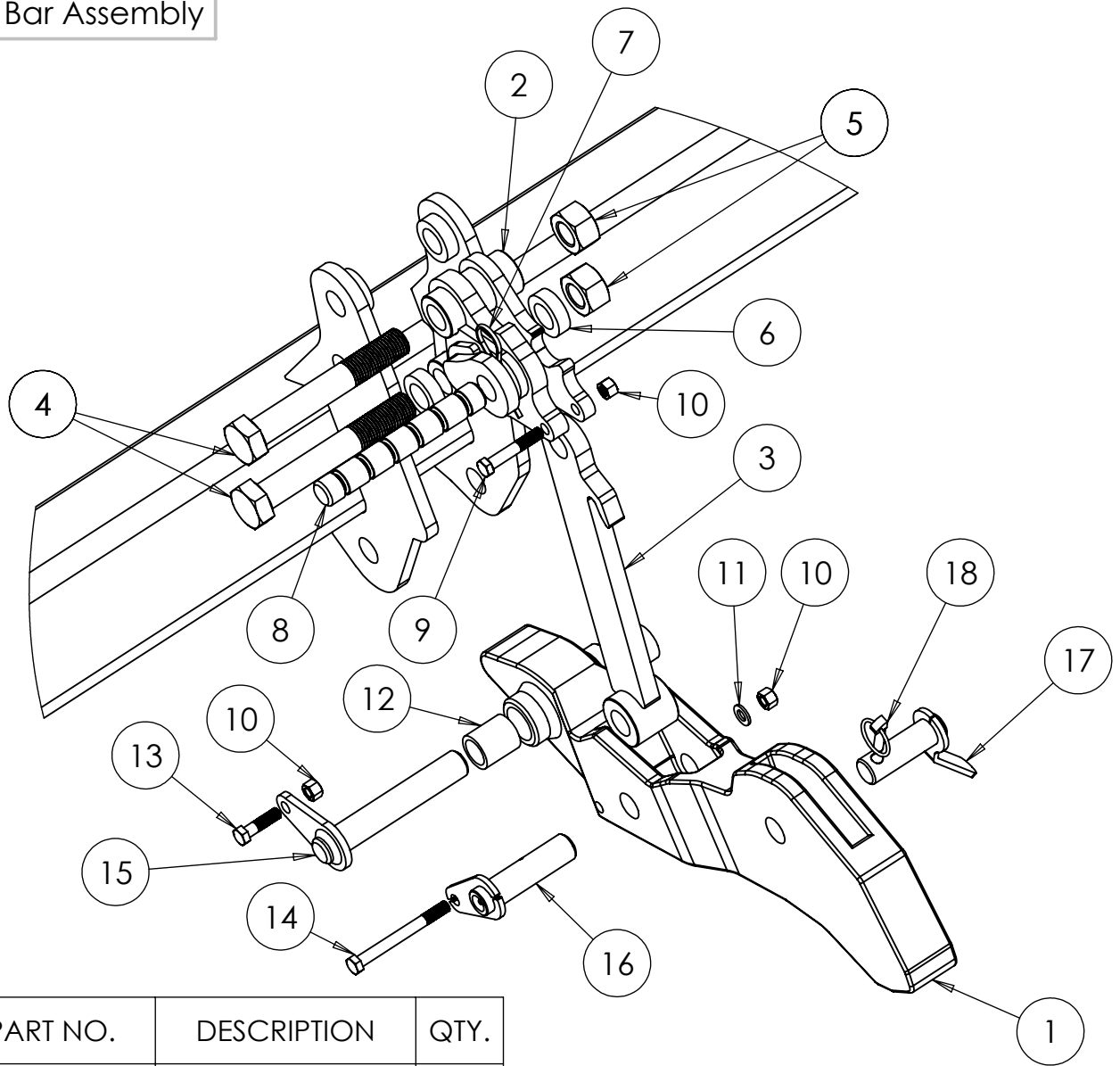
Scale 1:5

REVISION:

DATE: 19/1012

INITIAL: TW

6.9 Shear Bar Assembly



ITEM NO.	PART NO.	DESCRIPTION	QTY.
1	SW1017	Cast Socket	1
2	SW1196	Shear Bar Socket	1
3	SW1197	Shear Push Rod	1
4	SWM30200	M30 x 200 Bolt	2
5	SWM30004	M30 Nylock Nut	2
6	SW1198	50 x 30 x 15mm Spacer	2
7	SWB106	Shear Bar R-Clip	1
8	SWB160	Shear Bar	1
9	SWM1270	M12 x 70 bolt	1
10	SWM12004	M12 Nylock Nut	3
11	SWM120001	M30 Washer	2
12	SW188	30 x 40 x 45mm PB1 Bush	2
13	SWM1240	M12 x 40 Bolt	1
14	SWM12130	M12 x 130 Bolt	1
15	SW183	30 x 170mm Tabbed Pin	1
16	SW1192 & SW1192R	30 x 120mm Pivot Pin c/w Grease Nipple (L/H & R/H)	1
17	SW451	Leg Depth Pin	1
18	SWB105	Lynch Pin	1

DO NOT SCALE DRAWING

MACHINE/COMPONENT:

Sumo Trio

TITLE:

Shear Bar Assembly



Drawings and design information found herein remain the sole property of Sumo UK Ltd. Reproductions may only be made with the permission of the owner.

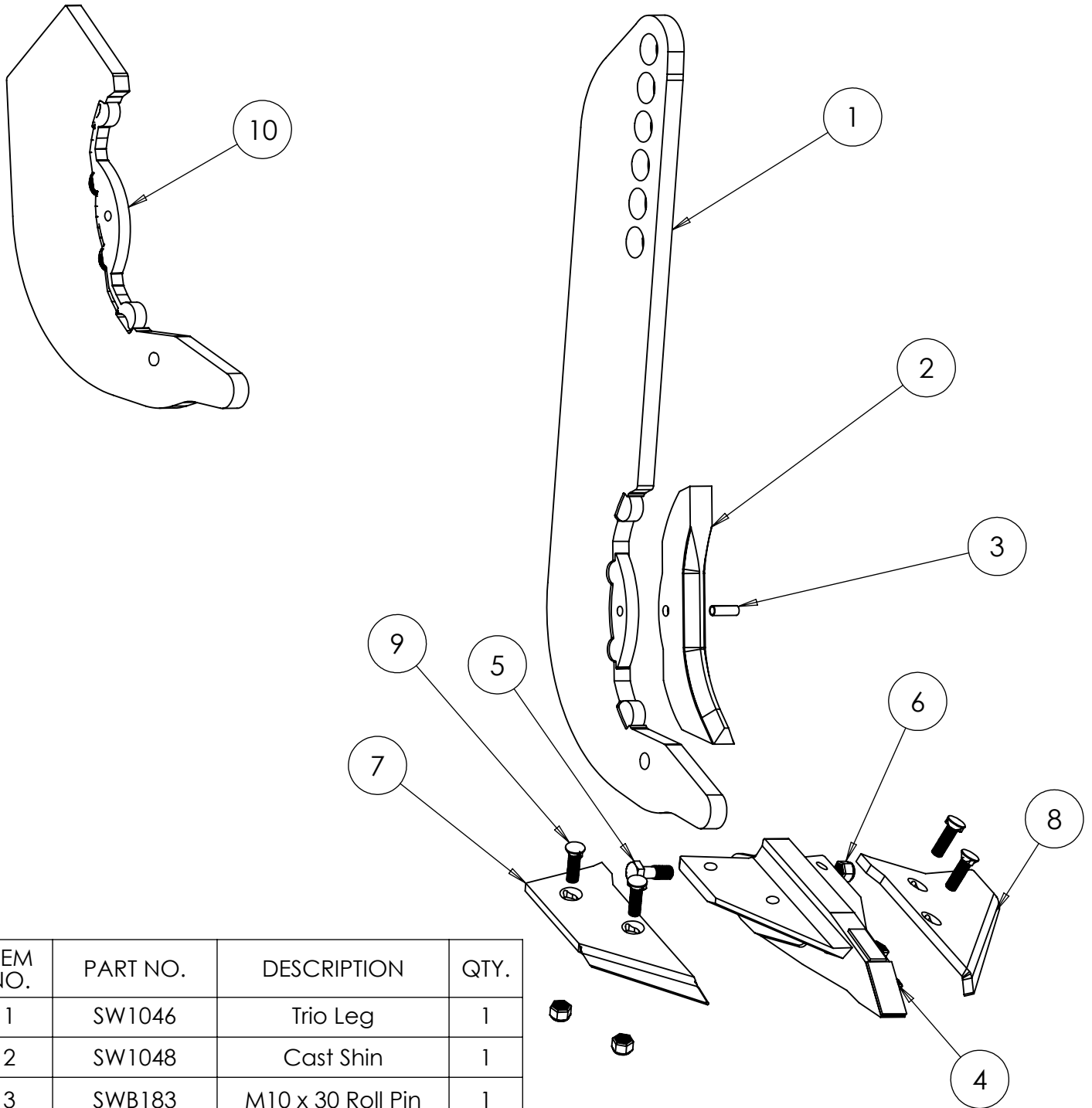
SCALE 1:7

REVISION:


DATE: 29/11/12

INITIAL: TW

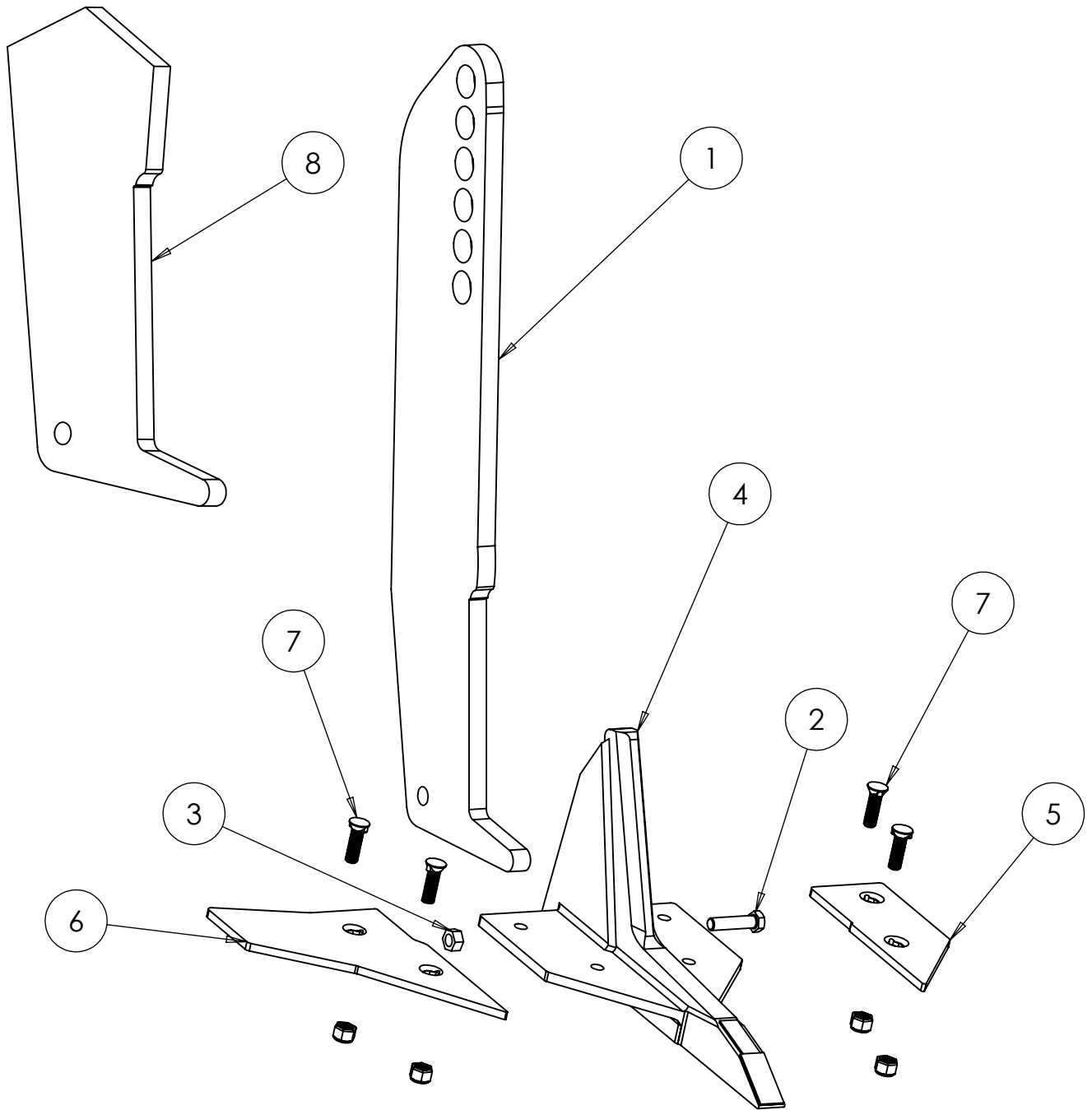
6.10 Trio Leg Assembly



ITEM NO.	PART NO.	DESCRIPTION	QTY.
1	SW1046	Trio Leg	1
2	SW1048	Cast Shin	1
3	SWB183	M10 x 30 Roll Pin	1
4	SW1050	Concord Point	1
5	SWM1250	M12 x 50 Bolt	1
6	SWM12004	M12 Nylock Nut	1
7	SWB401/400	4" R/H Wing & L/H Wing (Not Shown)	2
8	SWB366/367	8" L/H Wing & R/H Wing (Not Shown)	2
9	SWM1235TN	M12 x 35 Twin Nibbed Bolt c/w Plain Nut	4
10	SW1047	Trio Weld on Leg Bottom	1

DO NOT SCALE DRAWING	
MACHINE/COMPONENT:	Sumo Trio
TITLE:	Trio Leg Assembly
	
<small>Drawings and design information found herein remain the sole property of Sumo UK Ltd. Reproductions may only be made with the permission of the owner.</small>	
SCALE 1:6	REVISION:
DATE: 19/10/12	INITIAL: TW

6.11 Alternate Leg Assembly



ITEM NO.	PART NO.	DESCRIPTION	QTY.
1	SW777	Combi Trio Leg	1
2	SWM1660	M16 x 60 Bolt	1
3	SWM16004	M16 Nylock Nut	1
4	SW1100	Combi Trio Point	1
5	SW165/164	4" L/H Wing & R/H Wing (Not Shown)	2
6	SW157/158	8" R/H Wing & L/H Wing (Not Shown)	2
7	SWM1235TN	M12 x 35 Twin Nibbed Bolt c/w Plain Nut	4
8	SW354	Trio Leg Weld on Bottom	1

DO NOT SCALE DRAWING

MACHINE/COMPONENT:

Sumo Trio

TITLE:

Alternate Trio Leg Assembly



Drawings and design information found herein remain the sole property of Sumo UK Ltd. Reproductions may only be made with the permission of the owner.

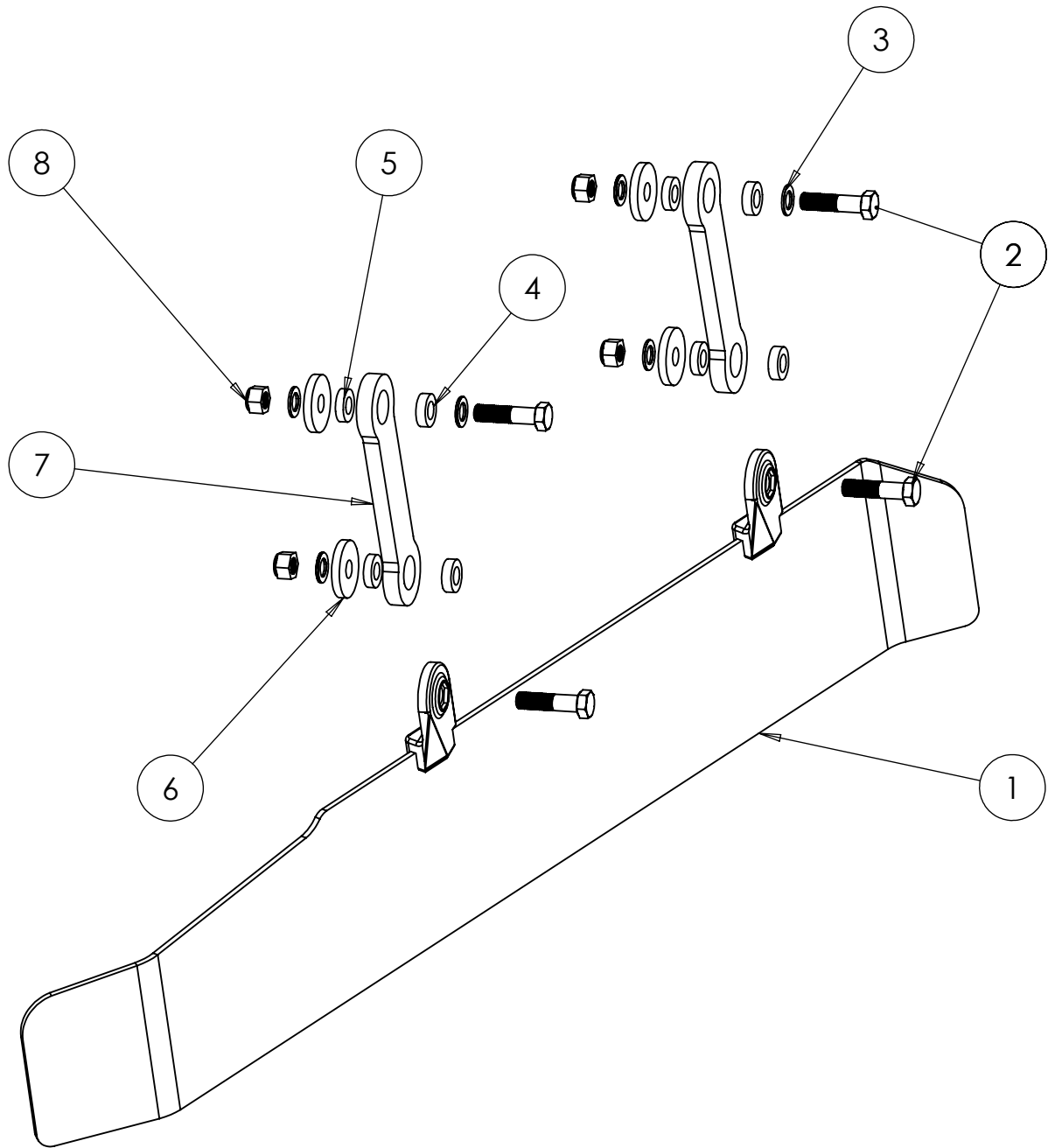
SCALE 1:6

REVISION:


DATE: 19/10/12

INITIAL: TW

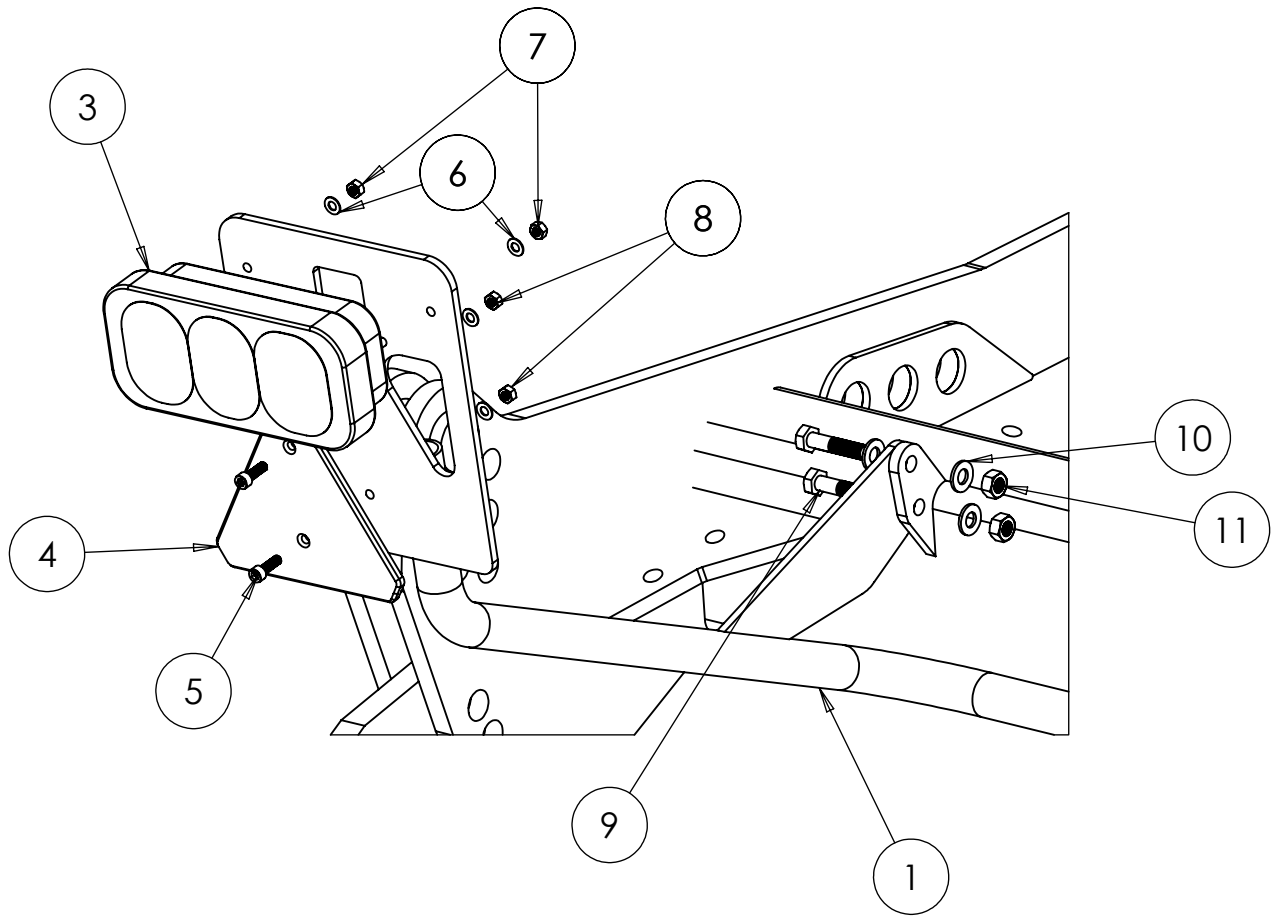
6.12 Soil Retainer Assembly



ITEM NO.	PART NO.	DESCRIPTION	QTY.
1	SW1061	R/H Soil Retainer	1
2	SWM2080	M20 x 80 Bolt	4
3	SWM20001	M20 Flat Washer	6
4	SW125	12mm Small Spacer	4
5	SW126	10mm Small Spacer	4
6	SW123	12mm Large Spacer	4
7	SW1049	Soil Retainer Hanger	2
8	SWM20004	M20 Nylock Nut	4
9	SW1062	L/H Soil Retainer (not shown)	1

DO NOT SCALE DRAWING	
MACHINE/COMPONENT:	Sumo Trio
TITLE:	Soil Retainer Assembly
	
Drawings and design information found herein remain the sole property of Sumo UK Ltd. Reproductions may only be made with the permission of the owner.	
SCALE 1:8	REVISION:
DATE: 22/10/12	INITIAL: TW

6.13 Light Assembly



ITEM NO.	PART NO.	DESCRIPTION	QTY.
1	SW1193	L/H Light BRacket	1
2	SW1194	R/H Light Bracket (not shown)	1
3	SWB174	Rear Light with Block Connector	1
4	SWB162	Warning Triangle	1
5	SWM616CSK	M6 x 16 Countersunk Bolt	2
6	SWM6001	M6 Washer	4
7	SWM6003	M6 Plain Nut	2
8	SWM6004	M6 Nylock Nut	2
9	SWM1045	M10 x 45 Bolt	2
10	SWM10001	M10 Washer	2
11	SWM10004	M10 Nylock Nut	2
12	SWB175	Mounted Trio Wiring Loom (not shown)	1

DO NOT SCALE DRAWING

MACHINE/COMPONENT:

Sumo Trio

TITLE:

Light Assembly



Drawings and design information found herein remain the sole property of Sumo UK Ltd. Reproductions may only be made with the permission of the owner.

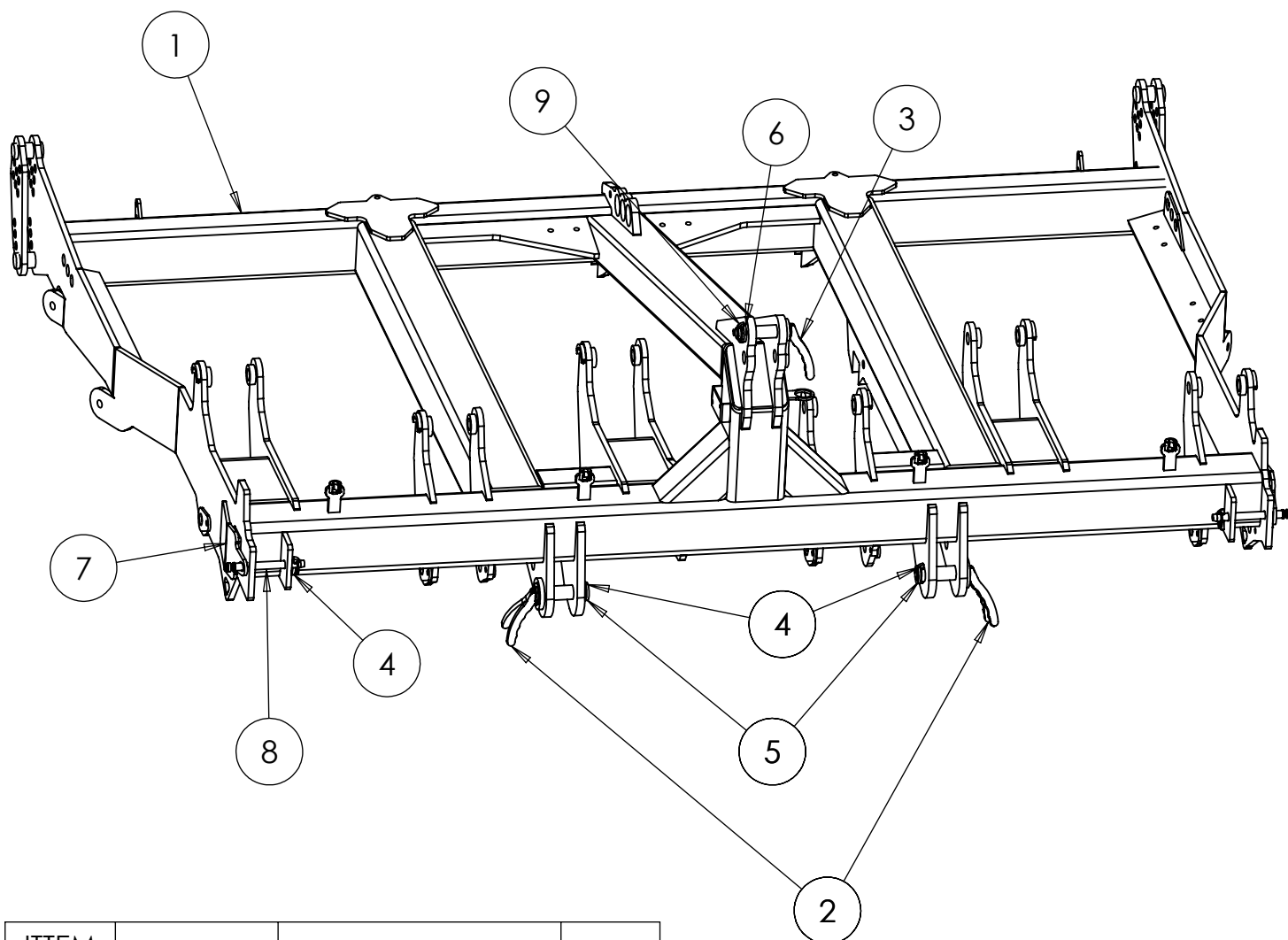
SCALE 1:5

REVISION:

DATE: 22/11/12

INITIAL: TW

6.14 Main Frame



ITEM NO.	PART NO.	DESCRIPTION	QTY.
1	SW1068	3m Auto reset & Shear Pin Trio Frame	1
2	SW626	Cat III Lower Link Pin	2
3	SW627	Cat III Top Link Pin	1
4	SWB107	Lynch Pin	3
5	SW1141	Lower Link Pin Spacer	2
6	SW1142	Top Link Pin Spacer	1
7	SW1195	Trio Front Stand	2
8	SW118	Font Stand Pin	2
9	SWB107	Large Lynch Pin	2
10	SW1067	2.5m Auto reset & Shear BAR Trio Frame (not shown)	1

DO NOT SCALE DRAWING

MACHINE/COMPONENT:

Sumo Trio

TITLE:

Main Frame



Drawings and design information found herein remain the sole property of Sumo UK Ltd. Reproductions may only be made with the permission of the owner.

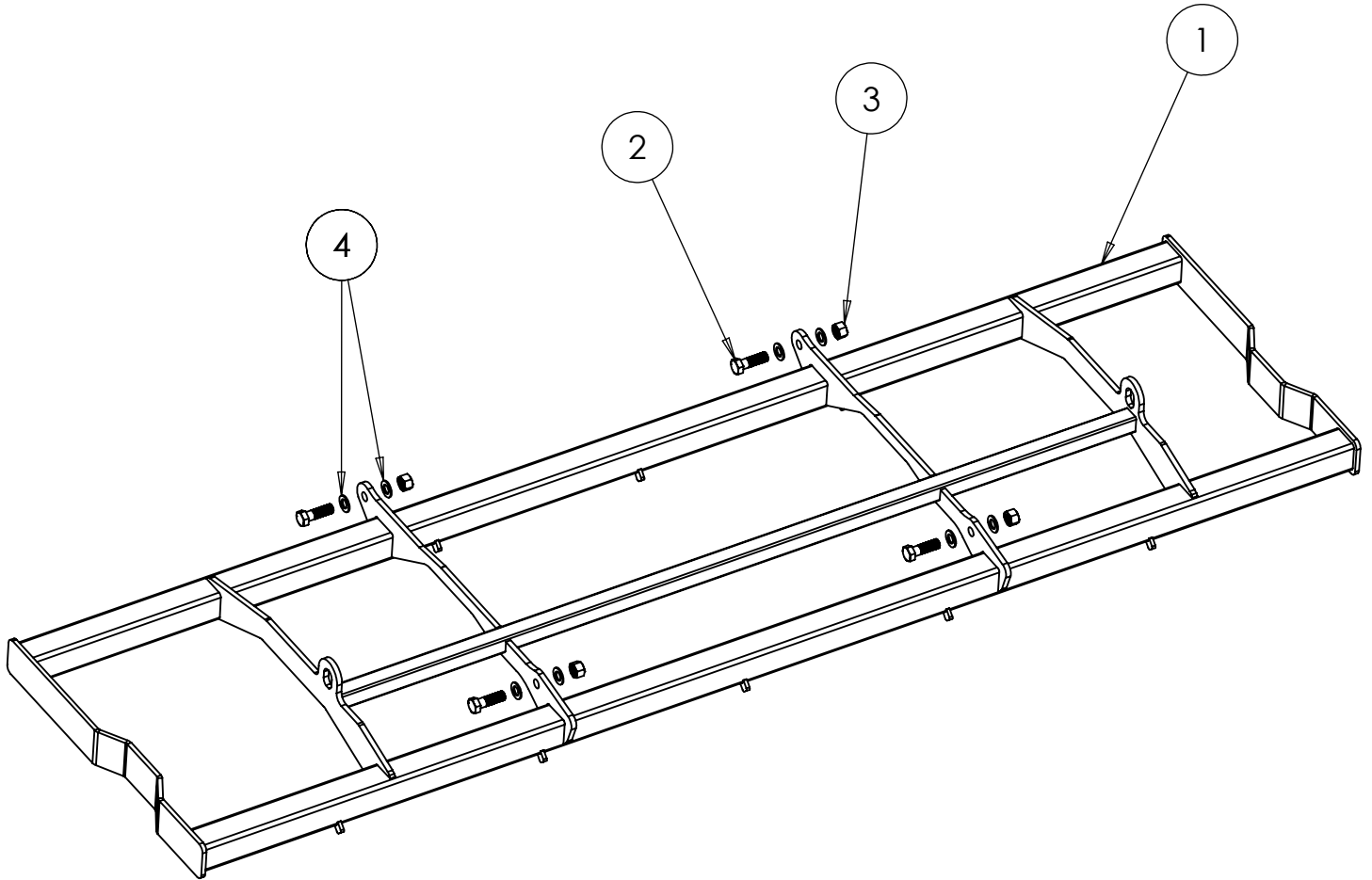
SCALE 1:17

REVISION:


DATE: 23/11/12

INITIAL: TW

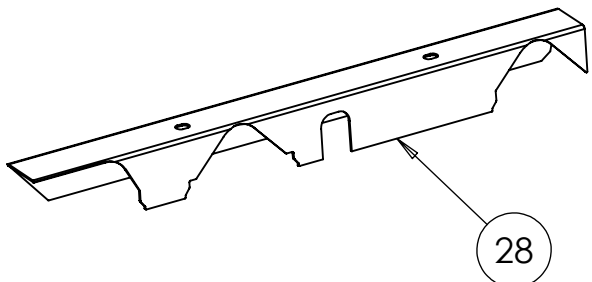
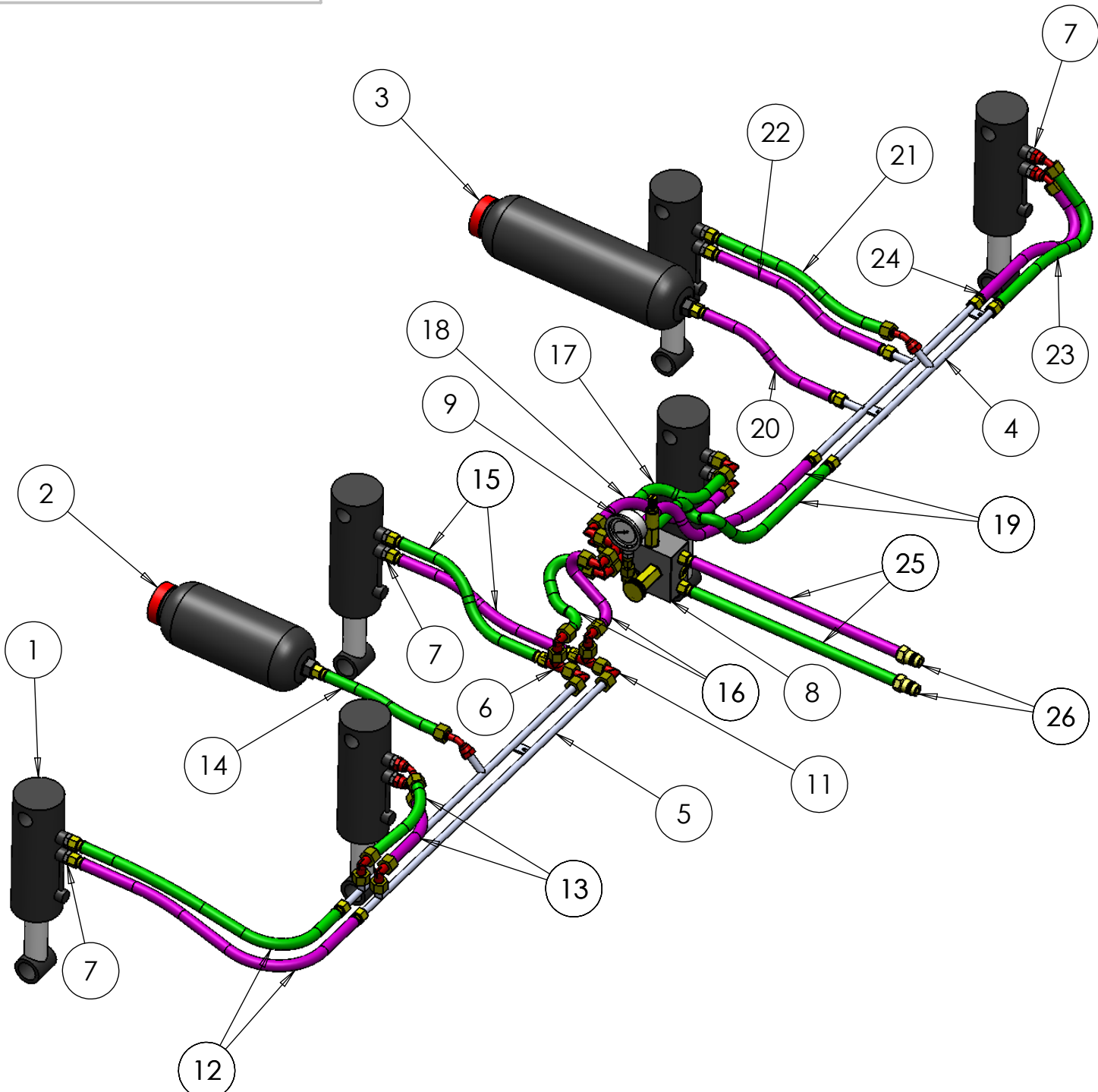
6.15 Disc Frame




ITEM NO.	PART NO.	DESCRIPTION	QTY.
1	SW1307	3m Trio Disc Frame	1
2	SWM2060	M20 x 60 Bolt	4
3	SWM20004	M20 Nylock Nut	4
4	SWM20001	M20 Washer	8
5	SW1428	2.5m Trio Disc Frame	1

DO NOT SCALE DRAWING	
MACHINE/COMPONENT: Sumo Trio	
TITLE: Disc Frame	
	
Drawings and design information found herein remain the sole property of Sumo UK Ltd. Reproductions may only be made with the permission of the owner.	
SCALE 1:15	REVISION:
DATE: 21/10/13	INITIAL: TW

6.16 Hydraulic Circuit



DO NOT SCALE DRAWING	
MACHINE/COMPONENT:	3m Sumo Trio
TITLE:	Hydraulic Circuit
	
<small>Drawings and design information found herein remain the sole property of Sumo UK Ltd. Reproductions may only be made with the permission of the owner.</small>	
SCALE: 1:10	REVISION:
DATE: 18/10/13	INITIAL: TW

6.16 Hydraulic Circuit Cont.

ITEM NO.	PART NO.	DESCRIPTION	QTY.
1	SWH328	705/1 Ram	6
2	SWH330	3L Accumulator	1
3	SWH331	1.5L Accumulator	1
4	SWH332	Fixed Pipe Assembly (LH)	1
5	SWH333	Fixed Pipe Assembly (RH)	1
6	SWH156	12L T	2
7	SWH303	12L - 3/8 Adaptor	12
8	SWH298	Auto Reset Valve	1
9	SWH181	Pressure Gauge	1
10	SWH155	12L Cross	2
11	SWH265	12L 90	2
12	SWH334	3/8 hose 12LSF/ 12LSF 640mm	2
13	SWH335	3/8 hose 12L45/ 12L90C 210mm	2
14	SWH336	3/8 hose 12L45/ 15LSF 280mm	1
15	SWH338	3/8 hose 12LSF/ 12LSF 350mm	2
16	SWH350	3/8 hose 12L90C/ 12L90SW 450mm	2
17	SWH341	3/8 hose 12L90C/ 12L90SW 340mm	1
18	SWH342	3/8 hose 12L90C/ 12L90SW 380mm	1
19	SWH337	3/8 hose 12LSF/ 12LSF 610mm	2
20	SWH343	3/8 hose 12LSF/ 15LSF 390mm	1
21	SWH344	3/8 hose 12LSF/ 12L45 370mm	1
22	SWH345	3/8 hose 12LSF/ 12LSF 335mm	1
23	SWH346	3/8 hose 12LSF/ 12L45 310mm	1
24	SWH347	3/8 hose 12LSF/ 12L45 300mm	1
25	SWH349	3/8 hose 12LSF/ 1/2M 1500mm	2
26	SWH147	Quick Release Coupling	2
27	SW1161	Fixed Pipe Cover (L/H) not shown	1
28	SW1162	Fixed Pipe Cover (R/H)	1

DO NOT SCALE DRAWING

MACHINE/COMPONENT:

3m Sumo Trio

TITLE:

Hydraulic Circuit



Drawings and design information found herein remain the sole property of Sumo UK Ltd. Reproductions may only be made with the permission of the owner.

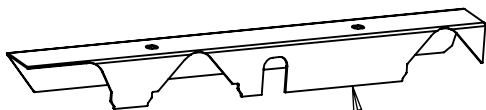
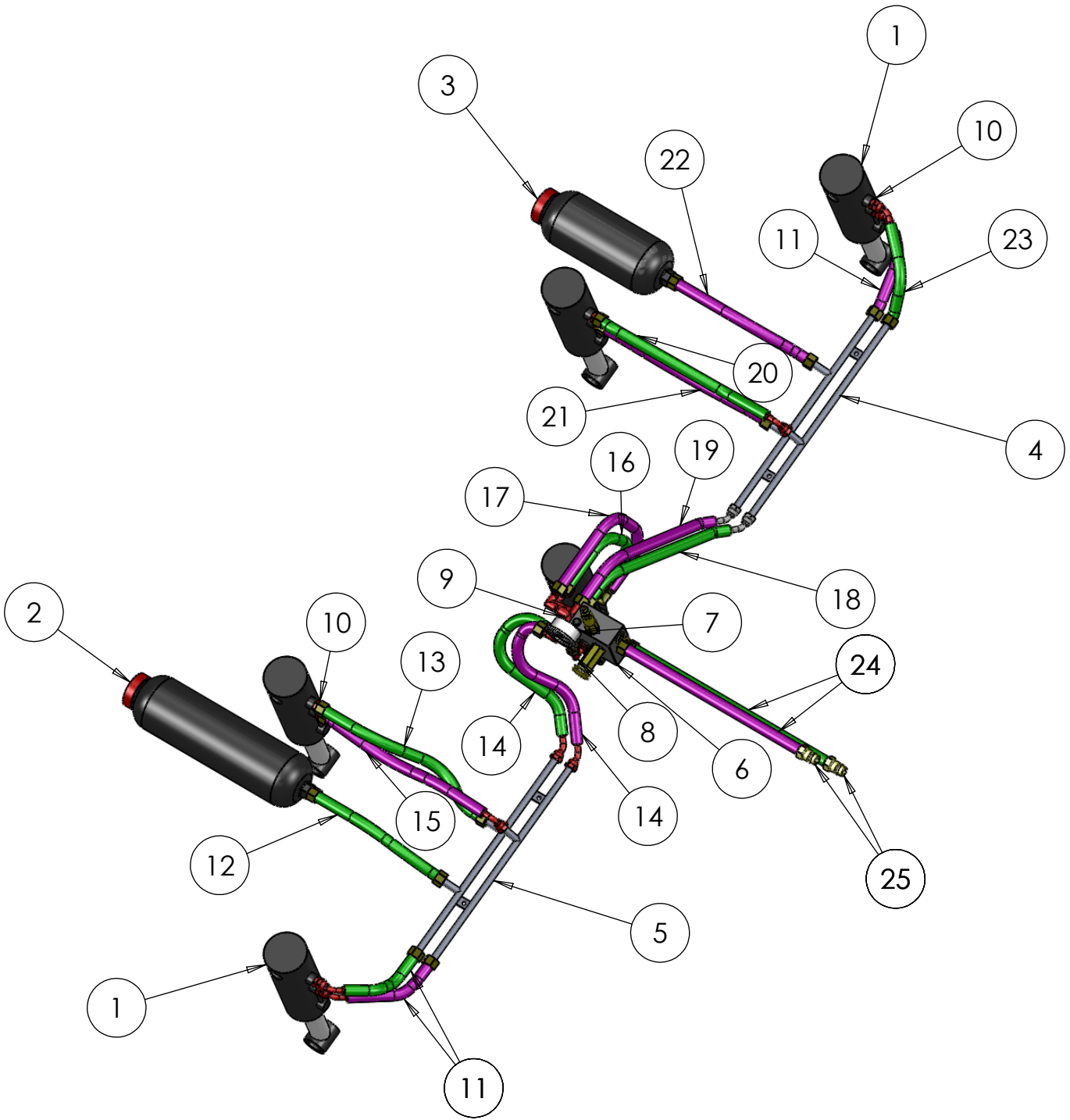
SCALE 1:10

REVISION:


DATE: 18/10/13

INITIAL: TW

6.17 Hydraulic Circuit



27

DO NOT SCALE DRAWING	
MACHINE/COMPONENT:	2.5m Sumo Trio
TITLE:	Hydraulic Circuit
	
<small>Drawings and design information found herein remain the sole property of Sumo UK Ltd. Reproductions may only be made with the permission of the owner.</small>	
SCALE 1:12	REVISION:
DATE: 22/11/12	INITIAL: TW

6.16 Hydraulic Circuit Cont.

ITEM NO.	PART NO.	DESCRIPTION	QTY.
1	SWH328	705/1 Ram	5
2	SWH330	3L Accumulator	1
3	SWH331	1.5L Accumulator	1
4	SWH351	Fixed Pipe Assembly (L/H)	1
5	SWH352	Fixed Pipe Assembly (R/H)	1
6	SWH298	Auto Reset Valve	1
7	SWH181	Pressure Gauge	1
8	SWH265	12L 90	1
9	SWH155	12L Cross	2
10	SWH303	12L - 3/8 Adaptor	8
11	SWH378	3/8 hose 12LSF/12L45 180mm	3
12	SWH379	3/8 hose 12LSF/15LSF 310mm	1
13	SWH380	3/8 hose 12LSF/12LSF 360mm	1
14	SWH381	3/8 hose 12L45/12L90 600mm	2
15	SWH382	3/8 hose 12LSF/12L45 365mm	1
16	SWH383	3/8 hose 12L90/ 3/8 Banjo 500mm	1
17	SWH384	3/8 hose 12L90/ 3/8 Banjo 550mm	1
18	SWH385	3/8 hose 12LSF/12L45 450mm	1
19	SWH386	3/8 hose 12LSF/12L45 470mm	1
20	SWH387	3/8 hose 12LSF/12L45 365mm	1
21	SWH388	3/8 hose 12LSF/12LSF 340mm	1
22	SWH389	3/8 hose 12LSF/12LSF 400mm	1
23	SWH390	3/8 hose 12LSF/12L45 220mm	1
24	SWH349	3/8 hose 12LSF/ 1/2M 1500mm	2
25	SWH147	Quick Release Coupling	2
26	SW1163	Fixed Pipe Cover (L/H) not shown	1
27	SW1164	Fixed Pipe Cover (R/H)	1

DO NOT SCALE DRAWING

MACHINE/COMPONENT:

2.5m Sumo Trio

TITLE:

Hydraulic Circuit



Drawings and design information found herein remain the sole property of Sumo UK Ltd. Reproductions may only be made with the permission of the owner.







SCALE 1:12

REVISION:

DATE: 22/11/12

INITIAL: TW

6.18 Stickers and Paint

Sticker	Description	Quantity	Part No.
	Big Sumo horizontal sticker 450 x 125mm	2	SWB125
	Big Trio sticker 320 x 125mm	2	SWB126
	Big Union Jack sticker 150 x 100mm	2	SWB127
	Vertical Sumo sticker 80 x 295mm	2	SWB128
	Small Union Jack sticker	2	SWB129
	Small Sumo Horizontal Sticker	6	SWB130
Sumo touch up paint	Sumo Red	1/2 Litre	SWB131
	Sumo Black	1/2 Litre	SWB132