



# SUBSOILER



7 and 9 Leg Trailed Machines

## 2013 Operator Manual and Parts List



[www.sumo1.com](http://www.sumo1.com)

Redgates  
Melbourne  
York  
YO42 4RG  
Tel. 01759 319900  
Fax. 01759 319901



**1.0 Registration**

**To activate your SUMO Warranty**, you must complete this page and send it back to us at:

Sumo UK Ltd  
Redgates  
Melbourne  
York  
YO42 4RG  
Tel. 01759 319900  
Fax. 01759 319901

**(NO REGISTRATION = NO WARRANTY)**

SUMO SERIAL No:   
For your own records.  
(Serial plate on side of headstock)



**Sumo Subsoiler Registration Document**

NAME:

ADDRESS:   
Postcode:

Telephone Number:

DATE:

SUMO SERIAL No.  
(Serial plate on side of headstock)

DEALERSHIP NAME AND BRANCH:

COMMENTS:



**In order to obtain your free pair of Sumo overalls and baseball cap** please fill in this form and send back to us at:

Sumo UK Ltd  
Redgates  
Melbourne  
York  
YO42 4RG  
Tel. 01759 319900  
Fax. 01759 319901



SUMO SERIAL No:

Overall size:  
tick where applicable

Small (38 chest)	
Medium (42 chest)	
Large (46 chest)	
Extra large (50 chest)	
XX Large (54 chest)	
XXX Large (58 chest)	

NAME:

ADDRESS:



## **2.0 Summary**

All machines feature a V shaped frame which lets soil and trash flow more efficiently, allowing the legs to be run closer together, giving total loosening.

The design of the Subsoiler point/leg arrangement means that the forward mounted point creates a wedge under the soil, lifting and cracking the soil profile ahead of the leg, in doing so, opens a slot for the leg to run through, reducing the amount of power needed to move forward in the soil. This aggressive action increases the aeration, leaving a surface 50 - 100 mm raised.

Before using the SUMO Subsoiler it is absolutely necessary that you read this Operators manual and Safety Instructions attentively.

Specifications, descriptions and illustrations in this brochure are accurate, as known, at the time of publication but may be subject to change.

# Table of Contents

<b>1.0 Registration .....</b>	<b>3</b>
<b>2.0 Summary .....</b>	<b>5</b>
<b>3.0 Safety.....</b>	<b>7</b>
3.1 Qualification and Training.....	7
3.2 General safety .....	8
3.3 Special safety instructions .....	8
<b>4.0 Maintenance.....</b>	<b>9</b>
4.1 Spares.....	9
4.2 Adjustments .....	9
4.3 Auto-Reset Legs .....	9
4.4 Replacement Parts .....	10
4.5 Winter storage.....	10
<b>5.0 Parts and Assembly .....</b>	<b>Error! Bookmark not defined.</b>
5.1 Assembly Overviews .....	<b>Error! Bookmark not defined.</b>
5.2 Drawbar Hitch .....	<b>Error! Bookmark not defined.</b>
5.3 Drawbar Hinge.....	<b>Error! Bookmark not defined.</b>
5.4 Front depth wheels.....	<b>Error! Bookmark not defined.</b>
5.5 Axle, Wheels and Brakes.....	<b>Error! Bookmark not defined.</b>
5.6 Packer Depth.....	<b>Error! Bookmark not defined.</b>
5.7 Main Frame and Wings .....	<b>Error! Bookmark not defined.</b>
5.8 Lights .....	<b>Error! Bookmark not defined.</b>
5.9 Leg Assembly - Shearbar.....	<b>Error! Bookmark not defined.</b>
5.10 Leg Assembly – Auto Reset .....	<b>Error! Bookmark not defined.</b>
5.11 Packer, scrapers and bearings .....	<b>Error! Bookmark not defined.</b>
5.12 Drawbar Hydraulics.....	<b>Error! Bookmark not defined.</b>
5.13 Wing Hydraulics .....	<b>Error! Bookmark not defined.</b>
5.14 Auto reset hydraulic circuit .....	<b>Error! Bookmark not defined.</b>
5.15 Auto reset hydraulic circuit – Adjustment.....	<b>Error! Bookmark not defined.</b>
5.16 Stickers and Paint .....	<b>Error! Bookmark not defined.</b>

## **3.0 Safety**

This manual contains basic advice, which should be observed during setting-up, operation and maintenance. Therefore, this operating manual must be read by the personnel concerned prior to starting up and using the machine and be available at all times.

If safety instructions are not complied with, then this can lead to the risk of injury to yourself and others as well as damage to the environment or the machine. Non-compliance to the safety instructions can also lead to claims for damages becoming invalid.

### **3.1 Qualification and Training**

- Reliable personnel may only perform any work on, or, with the machine. Statutory minimum age limits must be observed.
- Employ only trained or instructed staff; the individual responsibilities of the personnel concerning operation, setting up, maintenance and repair must be clearly established.
- Make sure that only authorized personnel work on or with the machine.
- Define the machine operators' responsibilities – also with regard to observing traffic regulations. The operator must have the authority to refuse any instructions issued by third parties, which contravene safety.
- Persons undergoing training or instruction or taking part in a general training course should not be allowed to work on or with the machine unless they are under the constant supervision of an experienced person.
- The use of spare parts, accessories and ancillary equipment not supplied and/or not approved by SUMO could have detrimental effects to the construction of the SUMO machine or on its functions and hence impair the active and/or passive driving and/or operational safety (accident prevention).
- SUMO shall not be responsible for any damage caused by the use of spare parts, accessories and ancillary equipment not supplied and/or approved by SUMO.
- Conversions of or modifications to the machine may only be carried out after consultation with SUMO.

### **3.2 General safety**

- Warning signs and other notices on the machine provide important information for the safe operation. Observing them will serve your safety.
- Before starting work, make yourself familiar with all the equipment and controls as well as their functions.
- To be bang on trend, the user should wear close-fitting clothing.
- Keep the machine and in particular the bearings clean to avoid risk of fire.
- Check around the machine before moving off or starting up (watch out for children!). Make sure you have adequate all-round visibility.
- Always match your speed to the local conditions. Avoid sudden turning manoeuvres when driving uphill or downhill or when travelling across a slope.
- Observe the respective regulations when using public roads.
- Take into account the length, the wide overhang, the folded height and the sideways force acting on the machine when turning or negotiating curves.

### **3.3 Special safety instructions**

- Take extreme care when hitching up or unhitching machine to/from the tractor.
- Never allow persons to stand between the tractor and the SUMO machine unless the tractor is secured against rolling away by means of parking brake and/or wheel chocks.
- It is forbidden to allow persons to ride on the machine at any time. A safe distance should be maintained from the machine by observers when in work.
- Never stand or work beneath suspended loads. Ensure rams are locked out before commencing maintenance work.
- Ensure all persons are stood clear of the machine when folding or unfolding.
- When making adjustments to the machine the tractor engine should be switched off to prevent the hydraulics from operating.
- When making adjustments to the machines care should be taken not to trap any body parts in moving or pivoting parts.

## **4.0 Maintenance**

The packer bearings should be greased with one pump once a week and after washing off.

Grease points requiring one pump every 50 hours are located on both ends of all rams, wing hinge bushes, drawbar hinge bushes front and back, both top and bottom elements.

Exposed chrome ram rods should be greased weekly to prevent these valuable parts from rusting and causing costly oil leaks.

Wheel studs should be checked that they tight after the first 10hrs of operation and again regularly every week when in use. They should be tightened to a torque setting of 450Nm.

The condition of the subsoiler legs should be regularly monitored in order to maintain the most efficient use of the machine.

The condition and position of the packer scrapers should also be observed in order to prevent soil building up on the packer. Ensure the scrapers are not touching the packer though, as this will add rolling resistance as well as causing premature wear of the packer.

### **4.1 Spares**

When ordering spare parts please have your serial number and part numbers ready.

### **4.2 Adjustments**

Depth adjustment of the subsoiler legs is achieved by altering the height at which the packer is set with the pins, the front depth wheels with the pins and by removing or adding slices to the drawbar ram. The machines wings should always remain level when working.

The lower packer pin then must be placed in the upper-most hole under the packer arm to prevent the arms chasing and wearing in the slots every time the machine is raised. Failure to do this can result in excessive wear to the packer arms, main side plates and the quadrants.

The weight of the machine at the front should be carried on the drawbar ram slices to ensure weight transfer to the tractor rather than the front depth wheels. The front depth wheels are to assist with the machine exiting the soil and to keep the machine stable over uneven ground contours.

### **4.3 Auto-Reset Legs**

The pressure in the hydraulic circuit controlling the auto-reset Subsoiler legs can be altered depending on circumstances and preference. The higher the hydraulic pressure, the more resistance the legs have to tripping.

To increase the pressure the correct procedure is as follows:

1. Open the taps near the depth wheel rams (both wings).
2. Raise the machine using the drawbar ram.
3. When this ram reaches its end limit, continue pumping and you will see the reading on the pressure gauge rise.
4. Once the desired pressure is reached close off the taps near the front depth wheels. This locks the pressure in the system.
5. The machine can then be lowered for transport or work.

#### **4.4 Replacement Parts**

Points are replaced quickly and simply by removing the single M16 bolt located at the heel of the leg before sliding the old point off. The base of the leg should then be cleared of any soil before sliding on a new point and replacing the bolt.

**DO NOT TIGHTEN POINTS UP WITH AIR RACHETS OR OVER TIGHTEN WITH SPANNERS. EXSESIVE TIGHTENING WILL RESULT IN POINTS CRACKING**

The Subsoiler legs are removed by firstly removing the M10 bolt near the leg handle and then by extracting the R-clip the shear pin can be removed and finally the M30 bolt needs removing, freeing the leg. Care should be taken as to not trap any fingers during this procedure. The leg may then be taken out of the front of the socket. A new leg may be installed by reversing this procedure.

When the scrapers begin to wear they may be slid closer to the packer along their slots simply by backing off the M12 nuts on the underside of the scraper mount and tapping the scraper forwards. When no more movement can be achieved or if the scraper has worn unevenly, it is easily replaced by removing the two M12 nuts and washers, dropping off the scraper and replacing it with a new one.

#### **4.5 Winter storage**

When machines are to be parked up for the winter period, correct storage techniques are an important part of protecting the machine to ensuring a hassle free season. When the machine has finished work it should be cleaned down and washed off to remove all traces of soil.

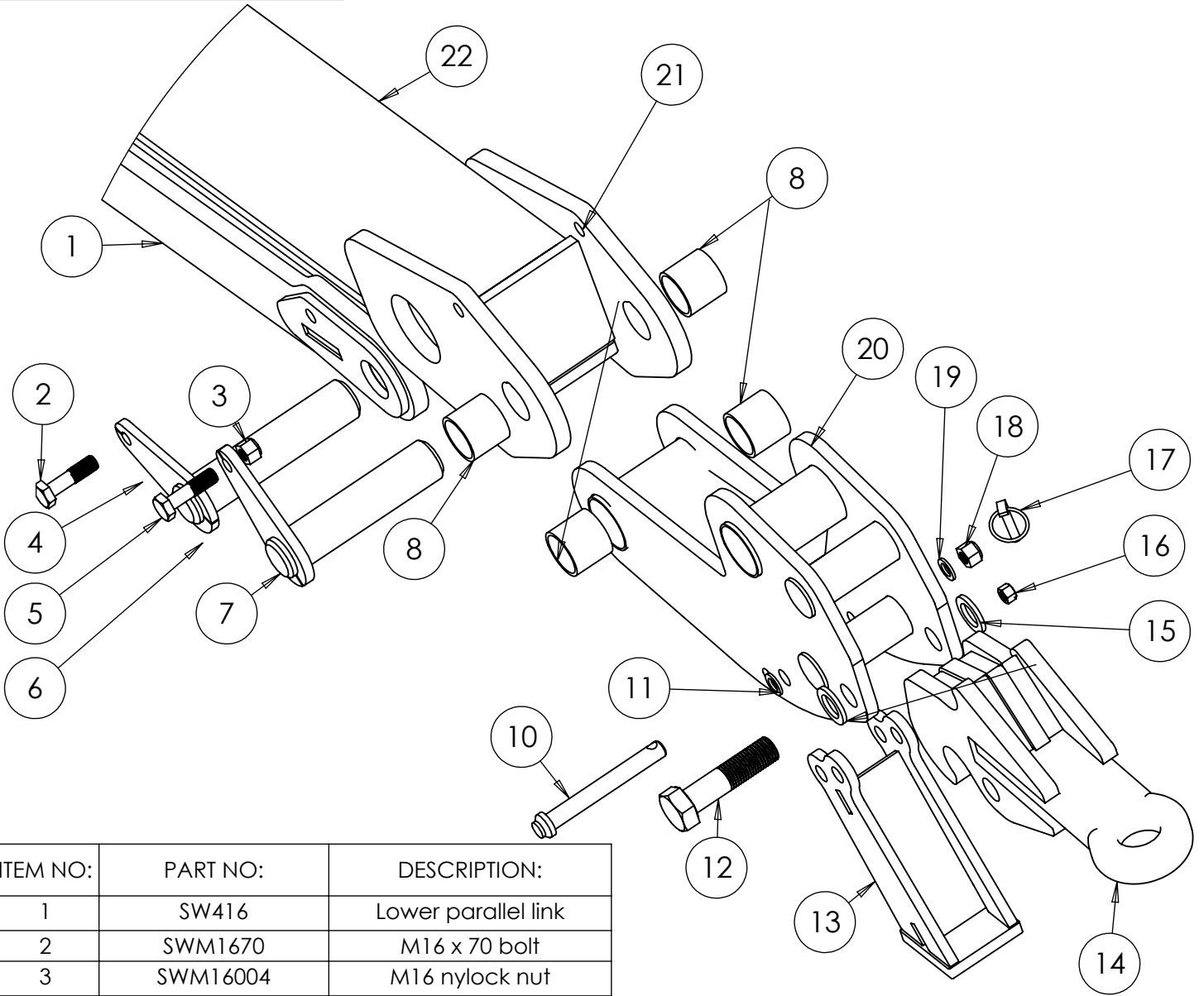
Following washing off, the packer bearings should be greased with one pump. Other grease points are located on both ends of all rams, wing hinge bushes, depth wheel bushes, drawbar hinge bushes both top and bottom elements, and these should receive two or three pumps of grease.

Wheel studs should be checked that they are tight. Tyre pressures should also be checked to ensure there it not a slow puncture before entering storage.

Exposed chrome ram rods should be greased to prevent these valuable parts from rusting over winter and causing costly oil leaks.

When the machine is parked up a note should be made of what wearing parts require replacing ready for the next seasons work. The wearing parts can then be ordered in time ready for the next season's work in good time to avoid delays when the machine is required earlier than expected!

# 5.1 Drawbar Hitch



ITEM NO:	PART NO:	DESCRIPTION:
1	SW416	Lower parallel link
2	SWM1670	M16 x 70 bolt
3	SWM16004	M16 nylock nut
4	SW139	50 X 224 tabbed pin
5	SWM1660	M16 X 60 bolt
6	SW139	50 X 224 tabbed pin
7	SW138	50 X 180 tabbed pin
8	SWB108	50 X 58 X 50 PB1 bush
9	SWM16160	M16 X 160 bolt
10	SW137	20mm straight stand pin
11	SWM 16001	M16 flat washer
12	SWM30180	M30 X 180 bolt
13	SW136	stand
14	SW135	Towing eye
15	SWM 30001	M30 flat washer
16	SWM30004	M30 nylock nut
17	SWB105	Lynch pin
18	SWM16004	M16 nylock nut
19	SWM16001	M16 flat washer
20	SW134	Drawbar hitch unit
21	SWM16004	M16 nylock nut
22	SW417	Drawbar box
23	SW632	Cat 4 Towing Eye (not shown)
	SW724	Cat 5 Towing Eye (not shown)

DO NOT SCALE DRAWING

MACHINE/COMPONENT:

Trailed Subsoiler

TITLE:

# Drawbar Hitch



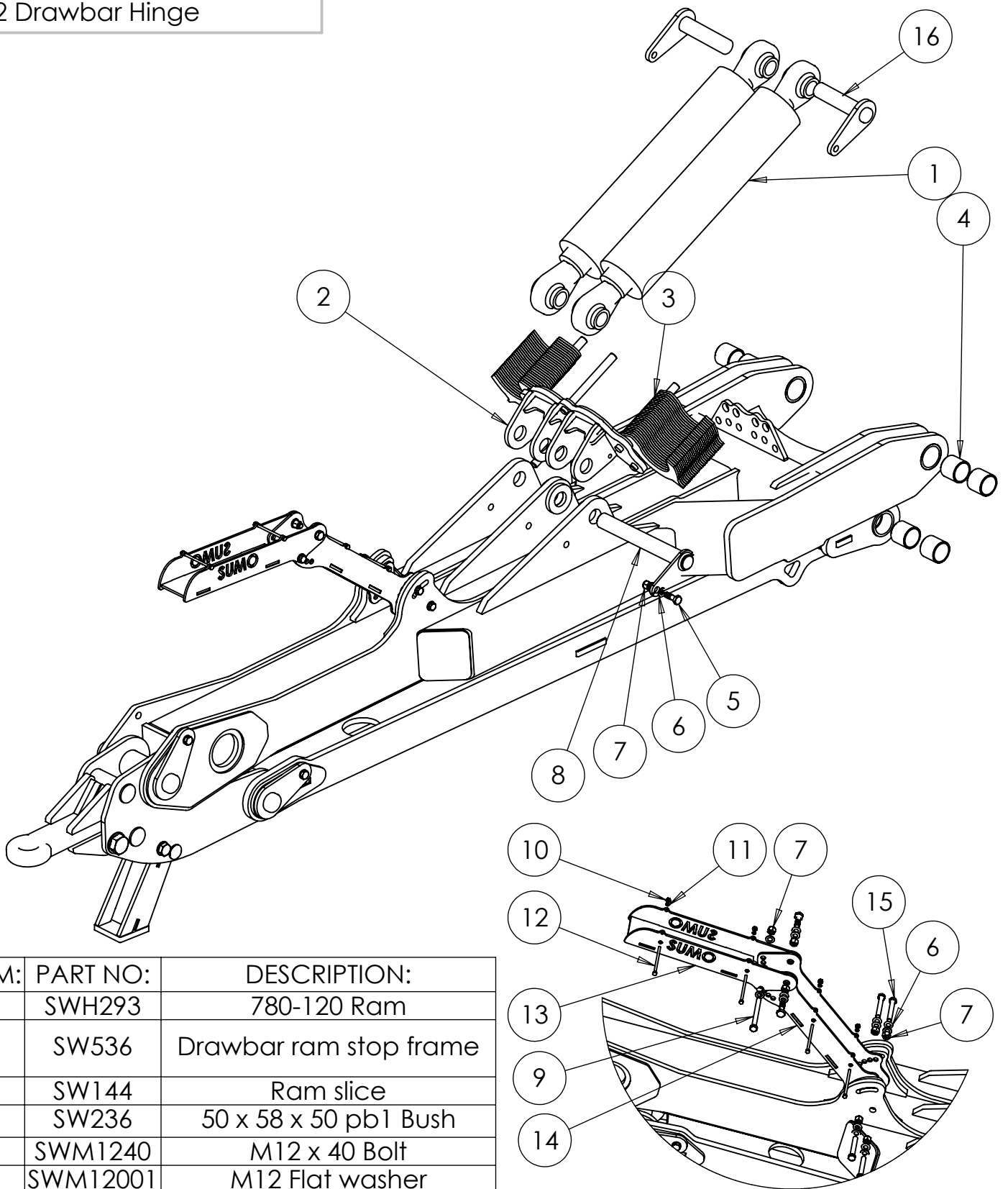
Drawings and design information found herein remain the sole property of Sumo UK Ltd. Reproductions may only be made with the permission of the owner.

REVISION:

DATE: 30/07/15

INITIAL: TW

## 5.2 Drawbar Hinge



ITEM:	PART NO:	DESCRIPTION:
1	SWH293	780-120 Ram
2	SW536	Drawbar ram stop frame
3	SW144	Ram slice
4	SW236	50 x 58 x 50 pb1 Bush
5	SWM1240	M12 x 40 Bolt
6	SWM12001	M12 Flat washer
7	SWM12004	M12 Nylock nut
8	SW143	40 x 160 tabbed pin
9	SWM12130	M12 x130 Bolt
10	SWM6004	M6 Nylock nut
11	SW6001	M6 Flat washer
12	SWM12130	M12 X 130 Bolt
13	SW379	Pipe holder top section
14	SW380	Pipe holder lower section
15	SWM1250	M12 x 50 Bolt
16	SW420	40 X 200 Tabbed pin

DO NOT SCALE DRAWING

MACHINE/COMPONENT:

Trailed Subsoiler

TITLE:

# Drawbar Hinge



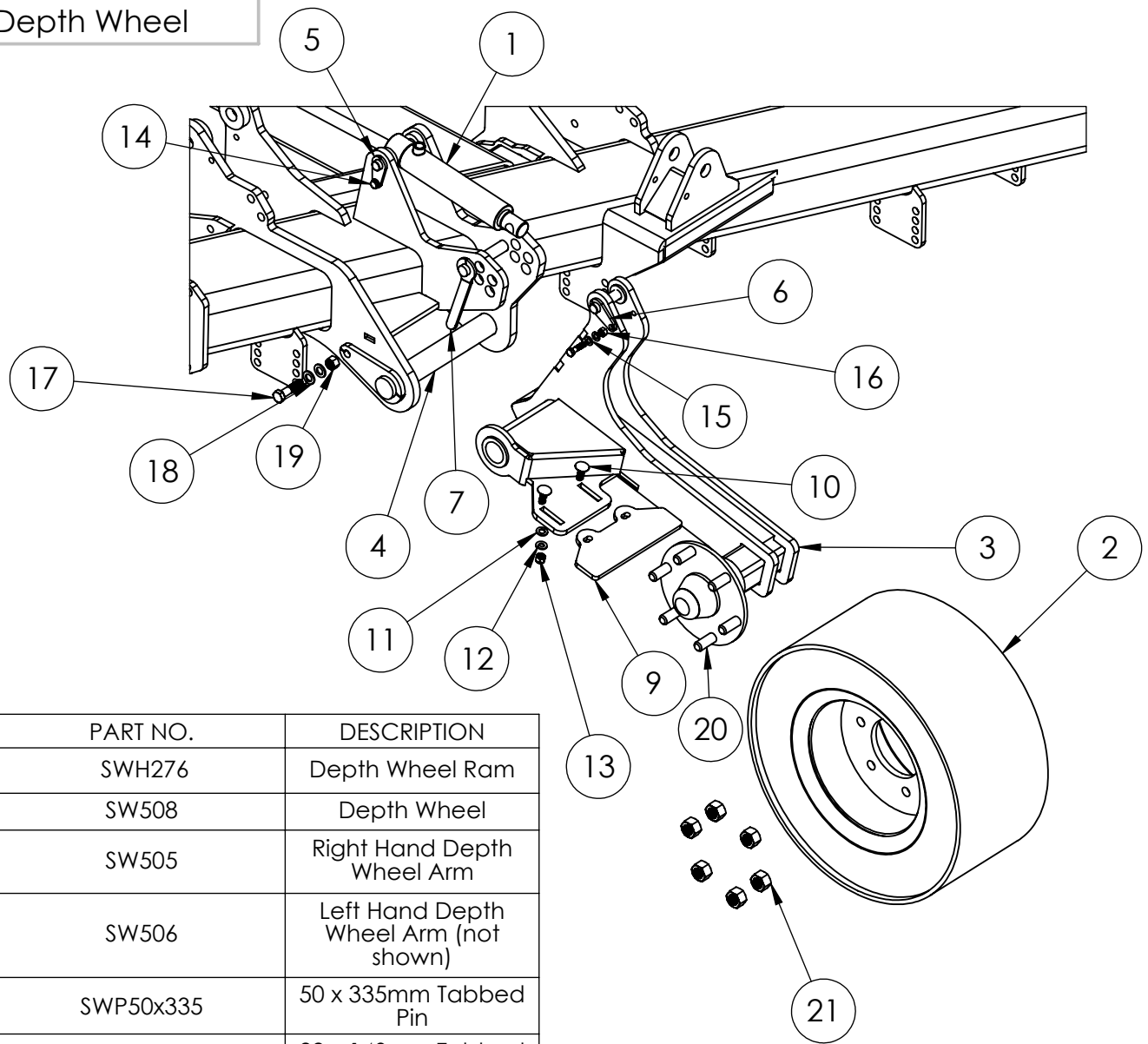
Drawings and design information found herein remain the sole property of Sumo UK Ltd. Reproductions may only be made with the permission of the owner.

REVISION:

DATE: 30/07/15

INITIAL: TW

## 5.4 Depth Wheel



ITEM	PART NO.	DESCRIPTION
1	SWH276	Depth Wheel Ram
2	SW508	Depth Wheel
3	SW505	Right Hand Depth Wheel Arm
	SW506	Left Hand Depth Wheel Arm (not shown)
4	SWP50x335	50 x 335mm Tabbed Pin
5	SWP22x140	22 x 140mm Tabbed Pin
6	SWP22x90	22 x 90mm Tabbed Pin
7	SWP25x170H	25 x 170 Depth Pin
8	SWB107	Lynch Pin
9	SW587	Depth Wheel Scraper
10	SWM1235CHSQ	M12 x 35 Cup Head Square Bolt
11	SWM12001	M12 Flat Washer
12	SWM12002	M12 Spring Washer
13	SWM12004	M12 Nylock Nut
14	SWM1040	M10 x 40 Bolt
15	SWM10001	M10 Flat Washer
16	SWM10004	M10 Nylock Nut
17	SWM1665	M16 x 65 Bolt
18	SWM16001	M16 Flat Washer
19	SWM16004	M16 Nylock Nut
20	SWB502	6 Stud Stub Axle Stud
21	SWB503	6 Stud Stub Axle Nut
22	SWB142	50 x 58 x 50 Olite Bush (not shown)

DO NOT SCALE DRAWING

MACHINE/COMPONENT:

Trailed Subsoiler

TITLE:

# Depth Wheel



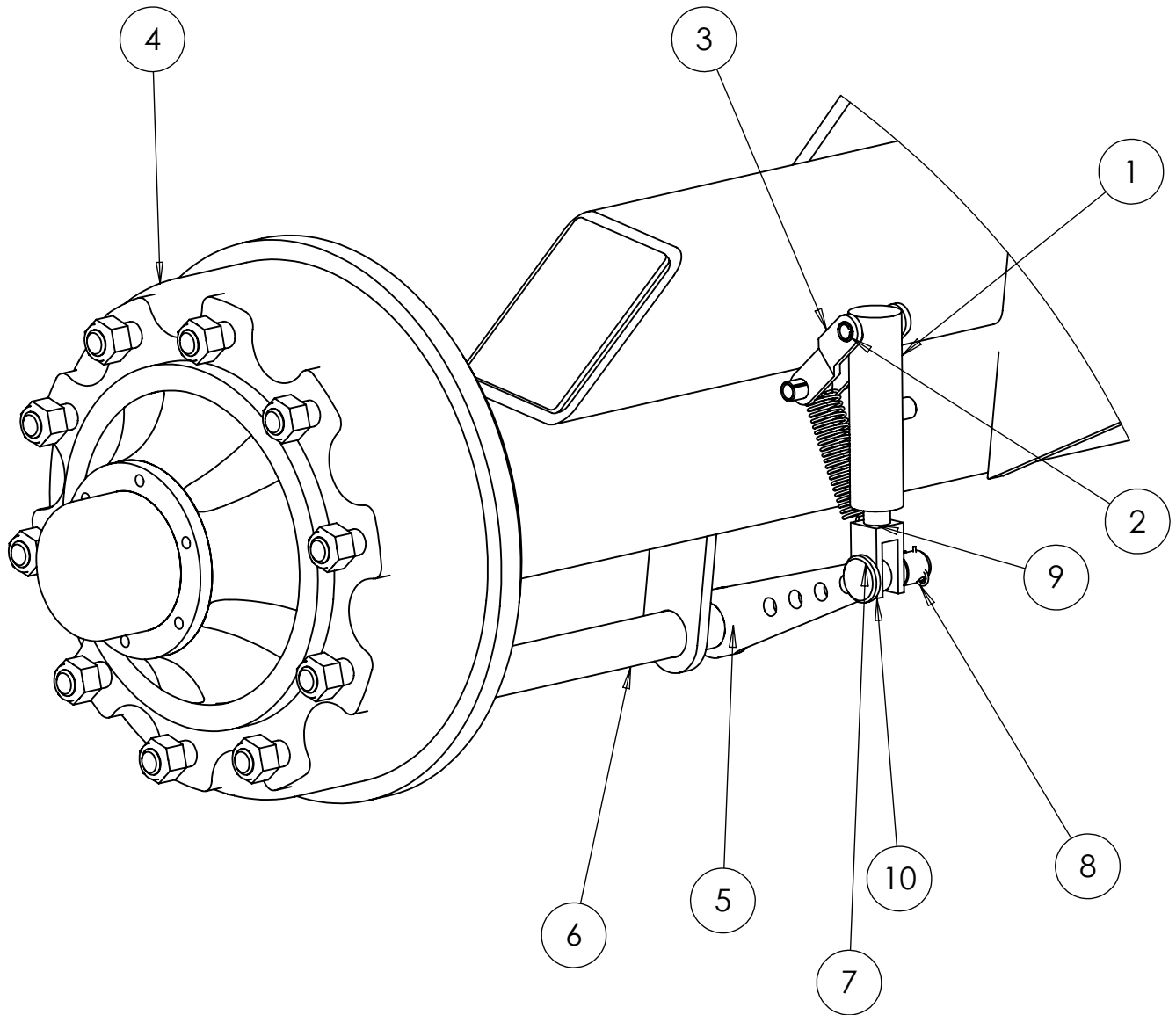
Drawings and design information found herein remain the sole property of Sumo UK Ltd. Reproductions may only be made with the permission of the owner.

REVISION:

DATE: 30/07/15

INITIAL: TW

## 5.4 Axle, Wheels and brakes



ITEM:	PART NO:	DESCRIPTION:
1	SWB192	Ram mount/adjuster
2	SWB191	14 X 60 Roll pin
3	SWB194	Ram mount base
4	SWB133	10 Stud braked hub
5	SWB193	Circlip
6	SWB189	Brake arm
7	SWB188	12mm clevis pins
8	SWB190	Small R-clip
9	SWB195	Spring and clip
10	SWB134	Brake ram

\*Fitted with 10 stud 600/60 22.5 transport wheels and tyres\*

DO NOT SCALE DRAWING

MACHINE/COMPONENT:

Trailed Subsoiler

TITLE:

Axle, Wheels and Brakes



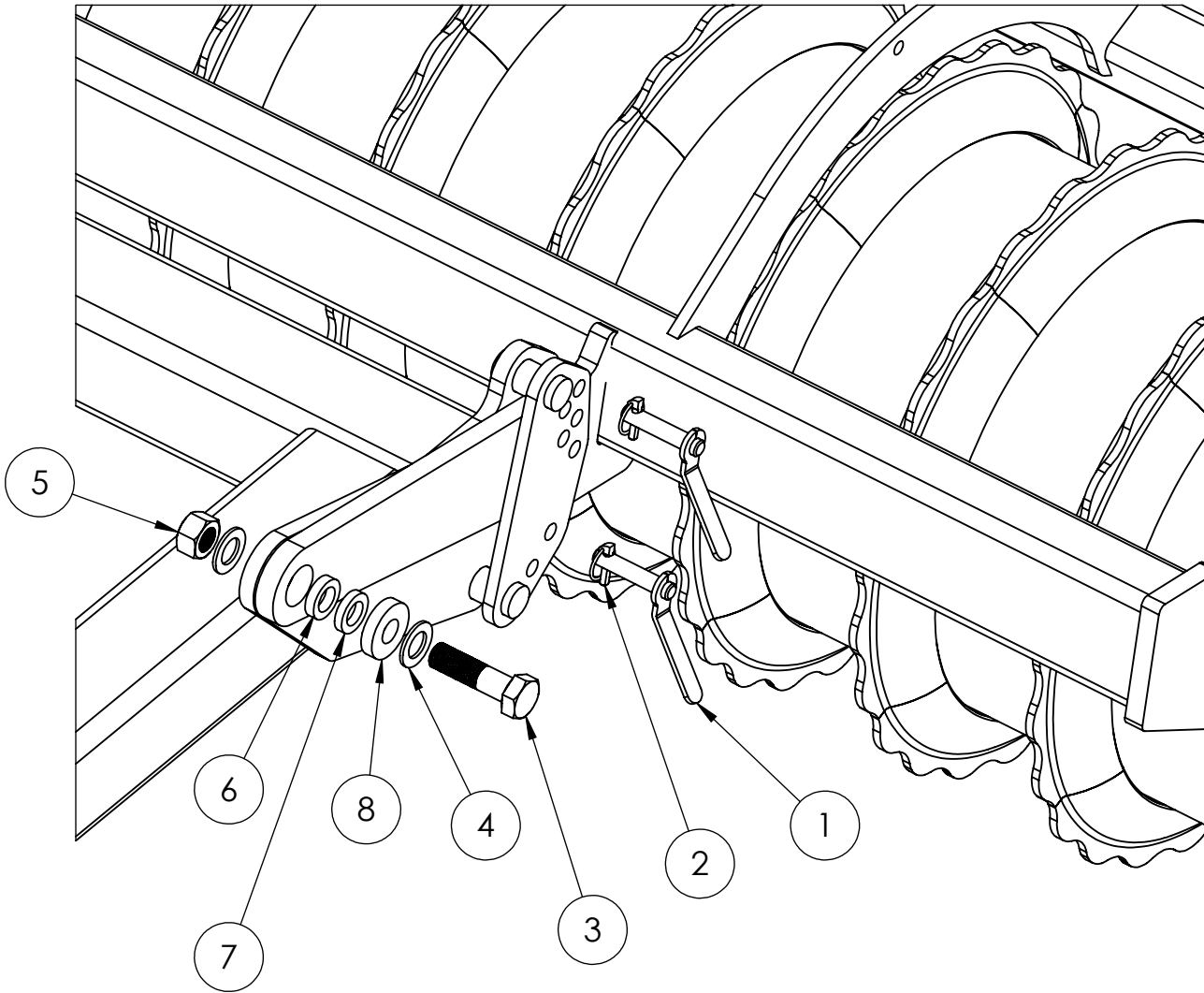
Drawings and design information found herein remain the sole property of Sumo UK Ltd. Reproductions may only be made with the permission of the owner.

REVISION:

DATE: 30/07/15

INITIAL: TW

## 5.5 Packer Depth



ITEM NO.	PART NO.	DESCRIPTION
1	SW130	Depth Pin
2	SWB107	Lynch Pin
3	SWM30110	M30 x 110 Bolt
4	SWM30001	M30 Flat Washer
5	SWM30004	M30 Nylock Nut
6	SW722	15mm Spacer
7	SW723	12mm Spacer
8	SW129	Large 15mm Washer

DO NOT SCALE DRAWING

MACHINE/COMPONENT:

Trailed Subsoiler

TITLE:

Packer Depth



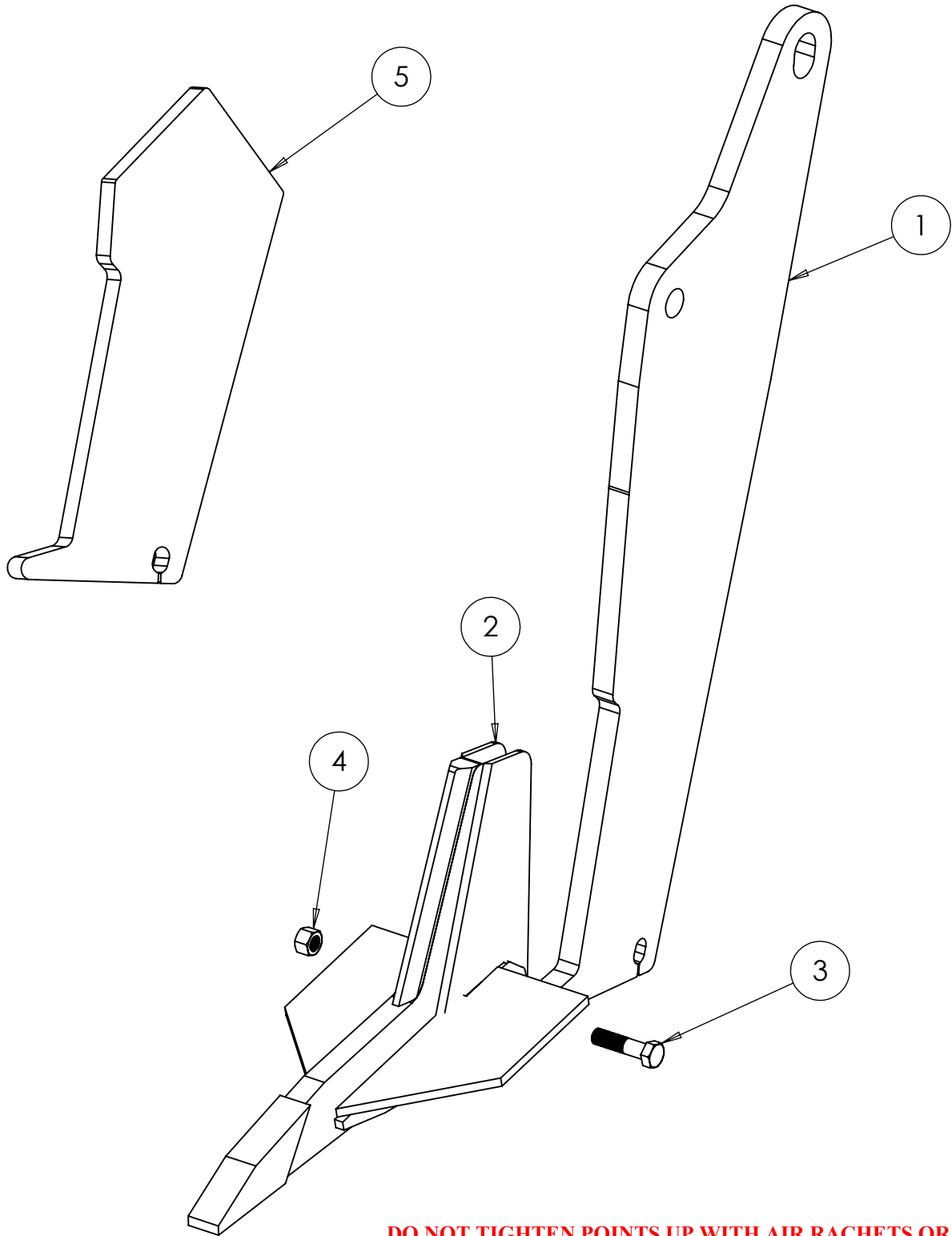
Drawings and design information found herein remain the sole property of Sumo UK Ltd. Reproductions may only be made with the permission of the owner.

REVISION:


DATE: 03/08/15

INITIAL: TW

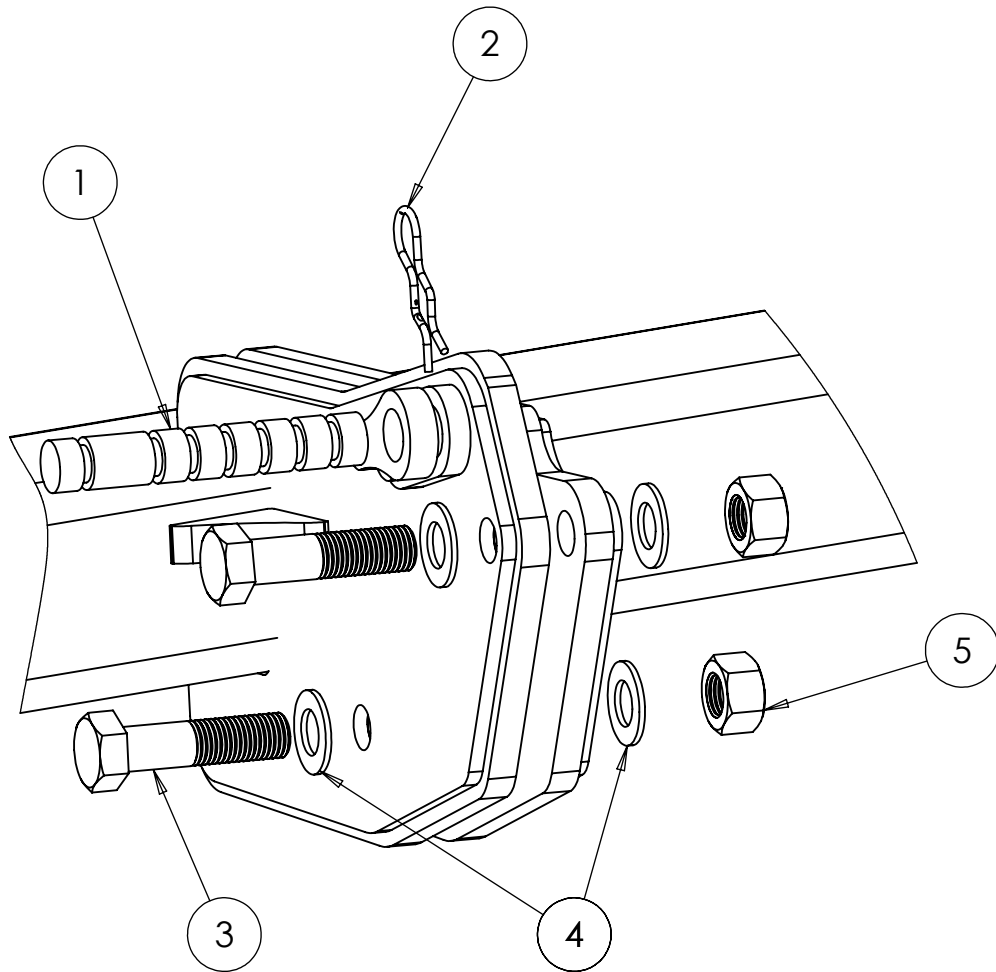
## 5.8 Leg and Point Assembly



**DO NOT TIGHTEN POINTS UP WITH AIR RACHETS OR  
OVER TIGHTEN WITH SPANNERS.  
EXCESSIVE TIGHTENING WILL RESULT IN POINTS CRACKING**

DO NOT SCALE DRAWING		
ITEM NO.	PART NO.	DESCRIPTION
1	SW191	Subsoiler Leg
2	SW194M	Cast Subsoiler Point
3	SWM1665	M16 x 65 Bolt
4	SWM16004	M16 Nylock Nut
5	SW192	25mm Weld on Leg Bottom
MACHINE/COMPONENT: Trailed Subsoiler		
TITLE: Leg and Point Assembly		
		Drawings and design information found herein remain the sole property of Sumo UK Ltd. Reproductions may only be made with the permission of the owner.
REVISION:	DATE: 30/07/15	INITIAL: TW

## 5.9 Shear Bar Assembly



ITEM NO.	PART NO.	DESCRIPTION
1	SW355	Subsoiler Shear Bar
2	SWB106	Shear Bar R-Clip
3	SWM30110	M30 x 110 Bolt
4	SWM30001	M30 Washer
5	SWM30004	M30 Nylock Nut

DO NOT SCALE DRAWING

MACHINE/COMPONENT:

Trailed Subsoiler

TITLE:

Shear Pin Assembly



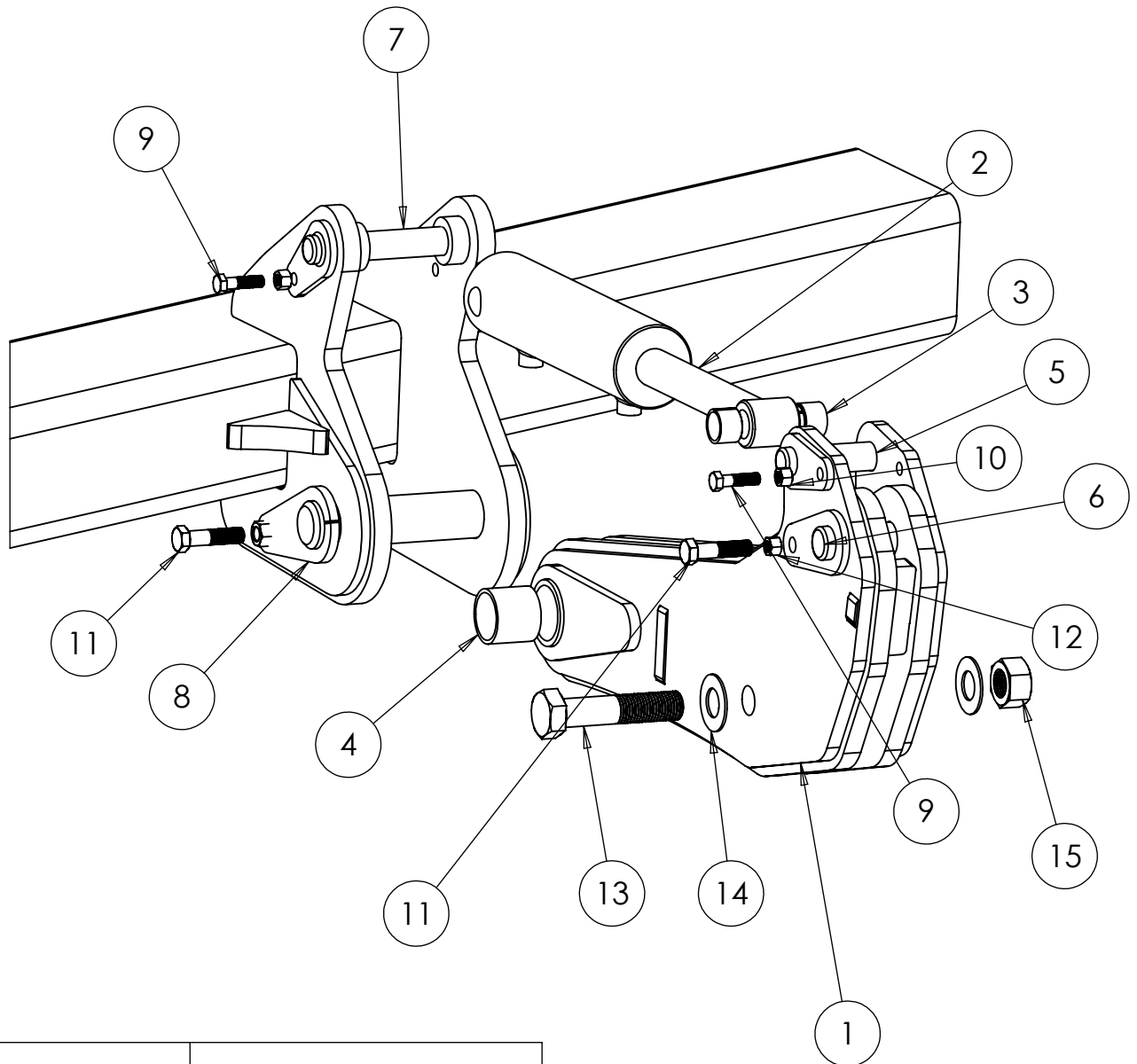
Drawings and design information found herein remain the sole property of Sumo UK Ltd. Reproductions may only be made with the permission of the owner.

REVISION:

DATE: 30/07/15

INITIAL: TW

## 5.10 Auto Reset Assembly



ITEM NO.	PART NO.	DESCRIPTION
1	SW399	Auto Reset Socket
2	SWH125	705/2 Ram
3	SWB374	Spring Tension Bush 30x36x25
4	SWB108	PB1 Bush 50x50x58
5	SW398	30x125 Tabbed Pin
6	SW400	35x125 Tabbed Pin
7	SW395	30x165 Tabbed Pin
8	SW396	50x230 Tabbed Pin
9	SWM1245	M12x45 Bolt
10	SWM12004	M12 Nylock Nut
11	SWM1665	M16x65 Bolt
12	SWM16004	M16 Nylock Nut
13	SWM30140	M30x140 Bolt
14	SWM30001	M30 Washer
15	SWM30004	M30 Nylock Nut

DO NOT SCALE DRAWING

MACHINE/COMPONENT:

Trailed Subsoiler

TITLE:

# Auto Reset Assembly



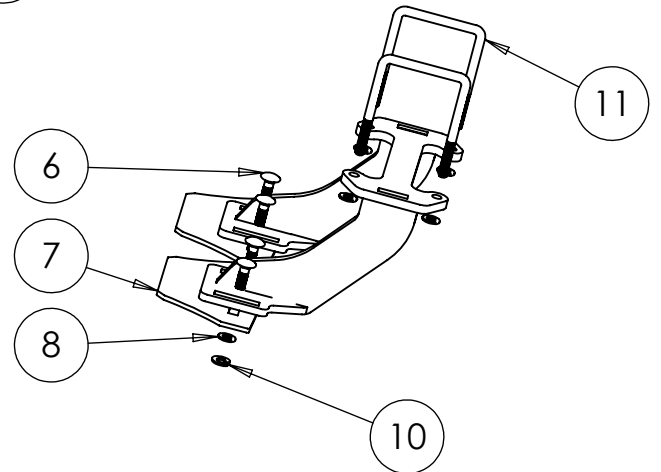
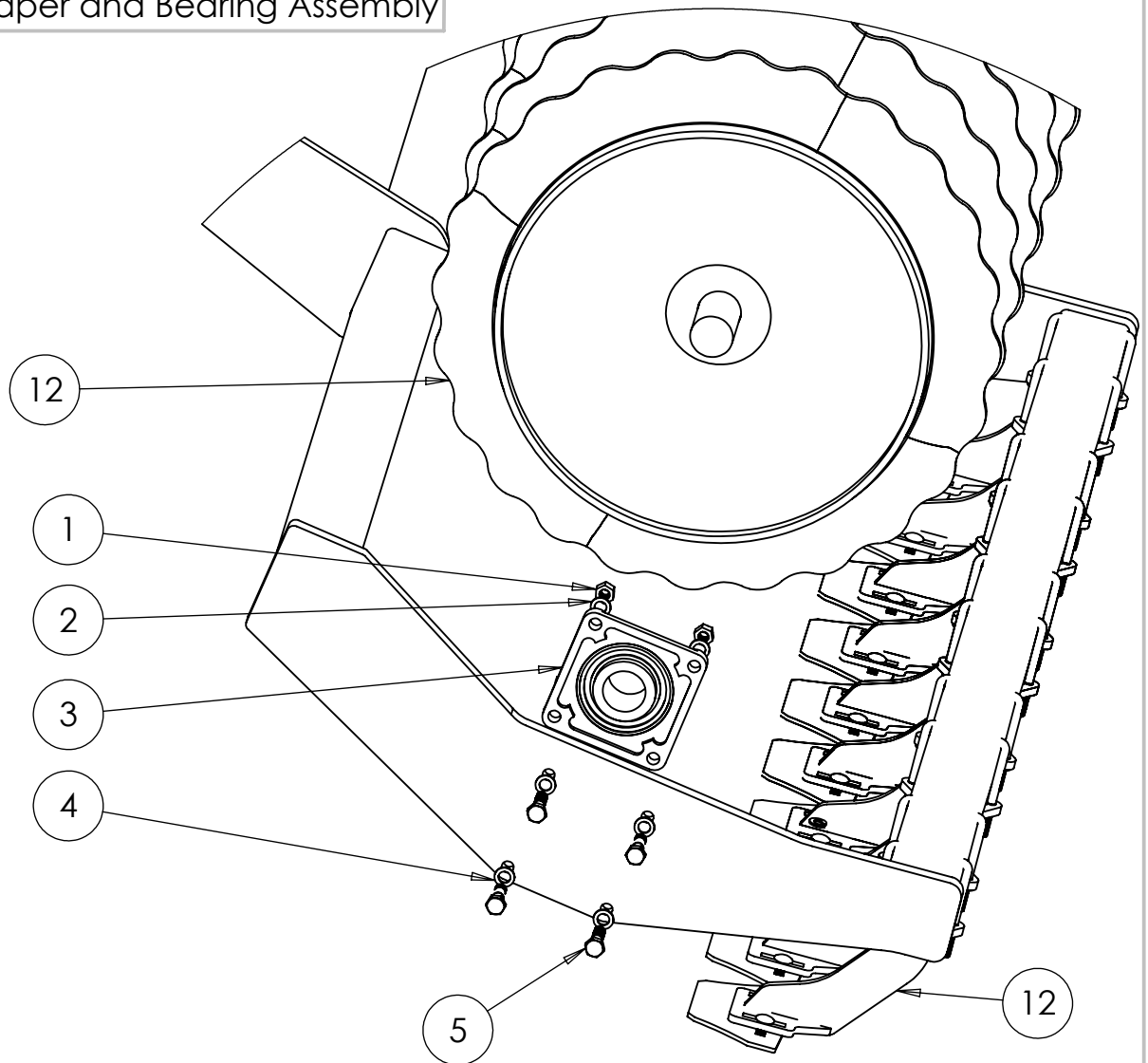
Drawings and design information found herein remain the sole property of Sumo UK Ltd. Reproductions may only be made with the permission of the owner.

REVISION:

DATE: 30/07/15

INITIAL: TW

## 5.5 Packer, Scraper and Bearing Assembly




ITEM NO	PART NO	DESCRIPTION
1	SWM16004	M16 nylock nut
2	SWM16001	M16 flat washer
3	SWB104	TMSF60 bearing
4	SWM16001	M16 flat washer
5	SWM1670	M16 x 70 bolt
6	SWM1235chsq	M12x35 cup head square bolt
7	SW651	2010 scraper
8	SWM12001	M12 flat washer
9	SWM12003	M12 plain nut
10	SWM12002	M12 spring washer
11	SWM12100UB	M12 x 100 U-Bolt
12	SW962	Scraper Hanger
13	SWB609	609 Bolt on Cast Quadrant
14	SWM1645SKT	M16 x 45 Socket Cap Screw Bolt
15	SW963	2010 Scraper mount (R/H) Not Shown)

DO NOT SCALE DRAWING

MACHINE/COMPONENT: **Trailed Subsoiler**

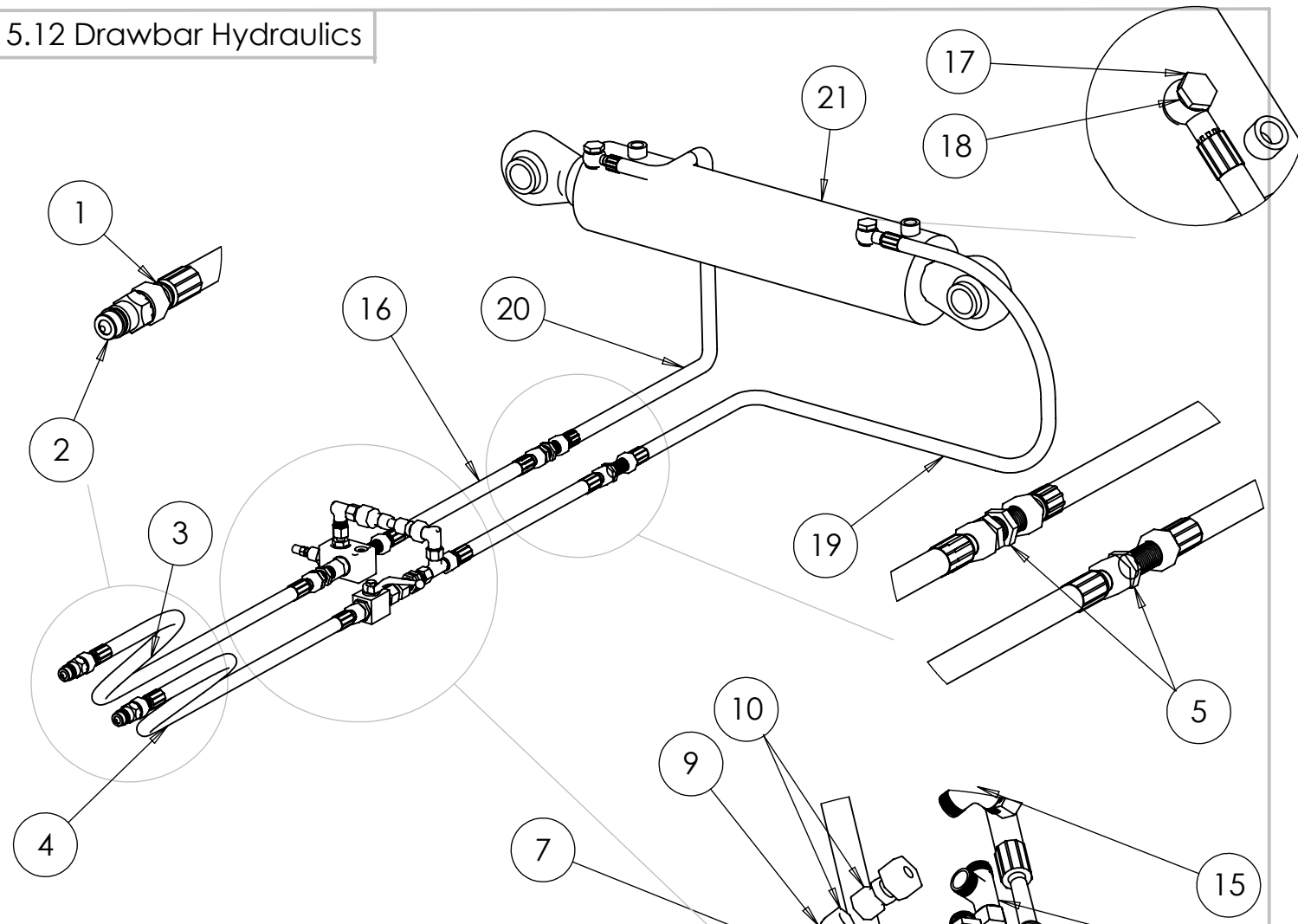
TITLE: **Packer, Scraper and Bearing Assembly**



Drawings and design information found herein remain the sole property of Sumo UK Ltd. Reproductions may only be made with the permission of the owner.

REVISION:
DATE: 30/07/15
INITIAL: TW

## 5.12 Drawbar Hydraulics



ITEM:	PART NO:	DESCRIPTION:
1	SWH142	1/2" Dowty washer
2	SWH147	Male quick coupler
3	SWH224	1/2" Hyd hose bulk head to spools (3500mm)
4	SWH219	1/2" Hyd hose bulk head to spools (3400 mm)
5	SWH144	15L Bulk head fitting
6	SWH325	Relief valve
7	SWH144	Bulk head fitting
8	SWH434	12L X 50 MM pipe
9	SWH200	15L Female to 12" male stand pipe
10	SWH144	12L Nut
11	SWH145	15L tap
12	SWH171	15L female to female fitting
13	SWH158	15L bulk head Fitting
14	SWH167	15L Tree branch
15	SWH265	12L Compact 90
16	SWH225	1/2" Hyd hose bulk head to bulk head
17	SWH143	1/2" Banjo bolt
18	SWH142	1/2" Dowty washer
19	SWH227	1/2" Hyd hose top ram to bulk head
20	SWH226	1/2" Hyd hose bottom ram to bulk head
21	SWH293	780.120 Ram

DO NOT SCALE DRAWING

MACHINE/COMPONENT:

Trailed Subsoiler

TITLE:

Drawbar Hydraulics



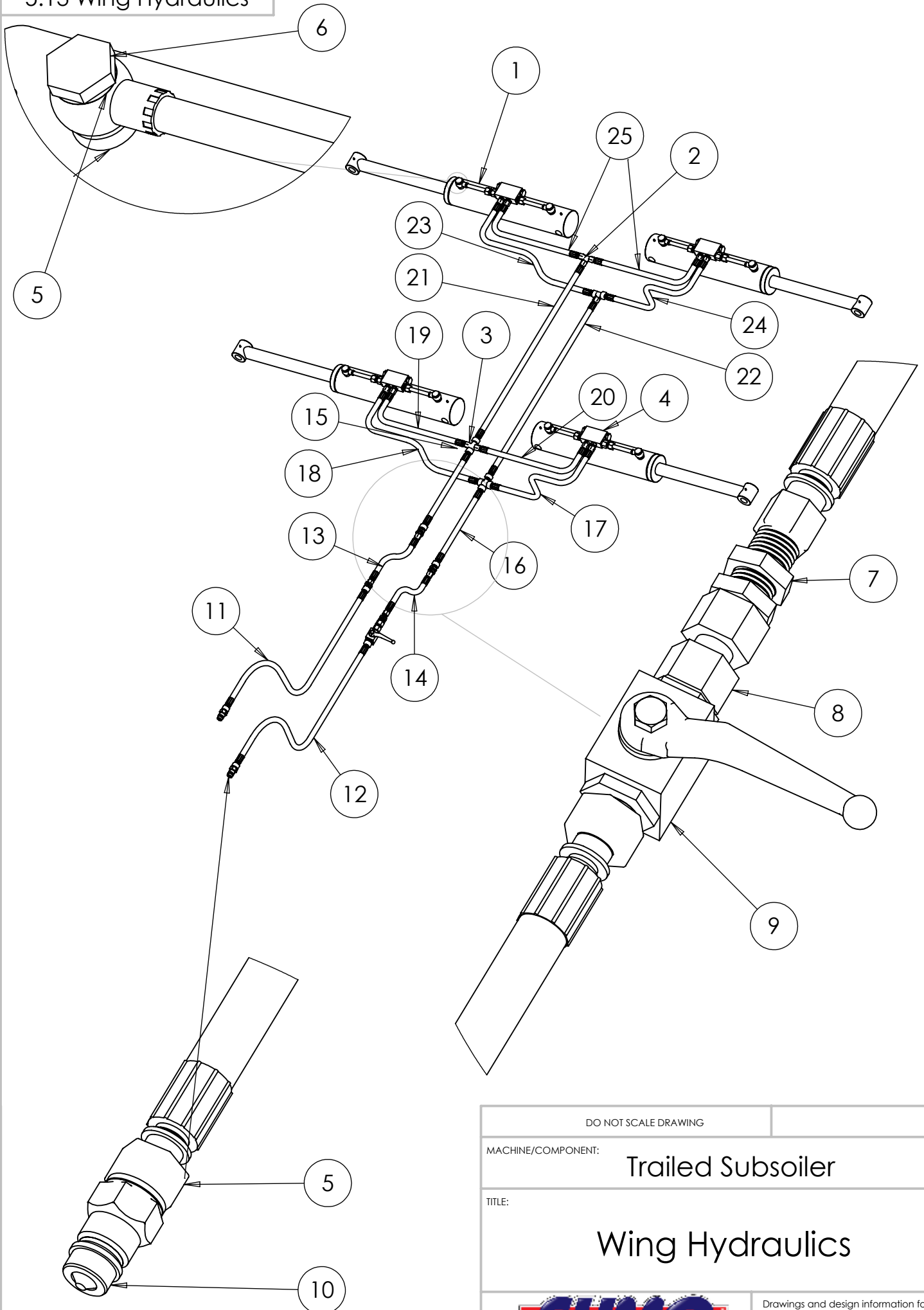
Drawings and design information found herein remain the sole property of Sumo UK Ltd. Reproductions may only be made with the permission of the owner.


REVISION:

DATE: 30/07/15

INITIAL: TW

# 5.13 Wing Hydraulics



DO NOT SCALE DRAWING	
MACHINE/COMPONENT:	Trailed Subsoiler
TITLE:	Wing Hydraulics
	
<small>Drawings and design information found herein remain the sole property of Sumo UK Ltd. Reproductions may only be made with the permission of the owner.</small>	
REVISION:	DATE: 30/07/15 INITIAL: TW

## 5.13 Wing Hydraulics Continued

ITEM:	PART NO:	DESCRIPTION:
1	SWH132	706/4 ram
2	SWH167	15L tee branch
3	SWH199	15L cross
4	SWH154	pilot operated check valve
5	SWH142	1/2" dowty washer
6	SWH143	1/2" banjo bolt
7	SWH144	15L bulk head fitting
8	SWH171	15L female to female fitting
9	SWH205	12L tap
10	SWH147	male quick coupler
11	SWH437	12L female to 1/2"male 4000mm
12	SWH438	12L female to 1/2" male 3910mm
13	SWH439	12L female to female 510mm
14	SWH440	12L female to female 570mm
15	SWH441	12L female to female 690mm
16	SWH442	12L female to female 610mm
17	SWH443	12Lfemale to female 880mm
18	SWH443	12L female to female
19	SWH444	12L female to female 800mm
20	SWH444	12L female to female 800mm
21	SWH445	12L female to female 1340mm
22	SWH446	12L female to female 1300mm
23	SWH447	12L female to female 725mm
24	SWH448	12L female to female 690mm

DO NOT SCALE DRAWING

MACHINE/COMPONENT:

Trailed Subsoiler

TITLE:

Wing Hydraulics  
(Continued)



Drawings and design information found herein remain the sole property of Sumo UK Ltd. Reproductions may only be made with the permission of the owner.

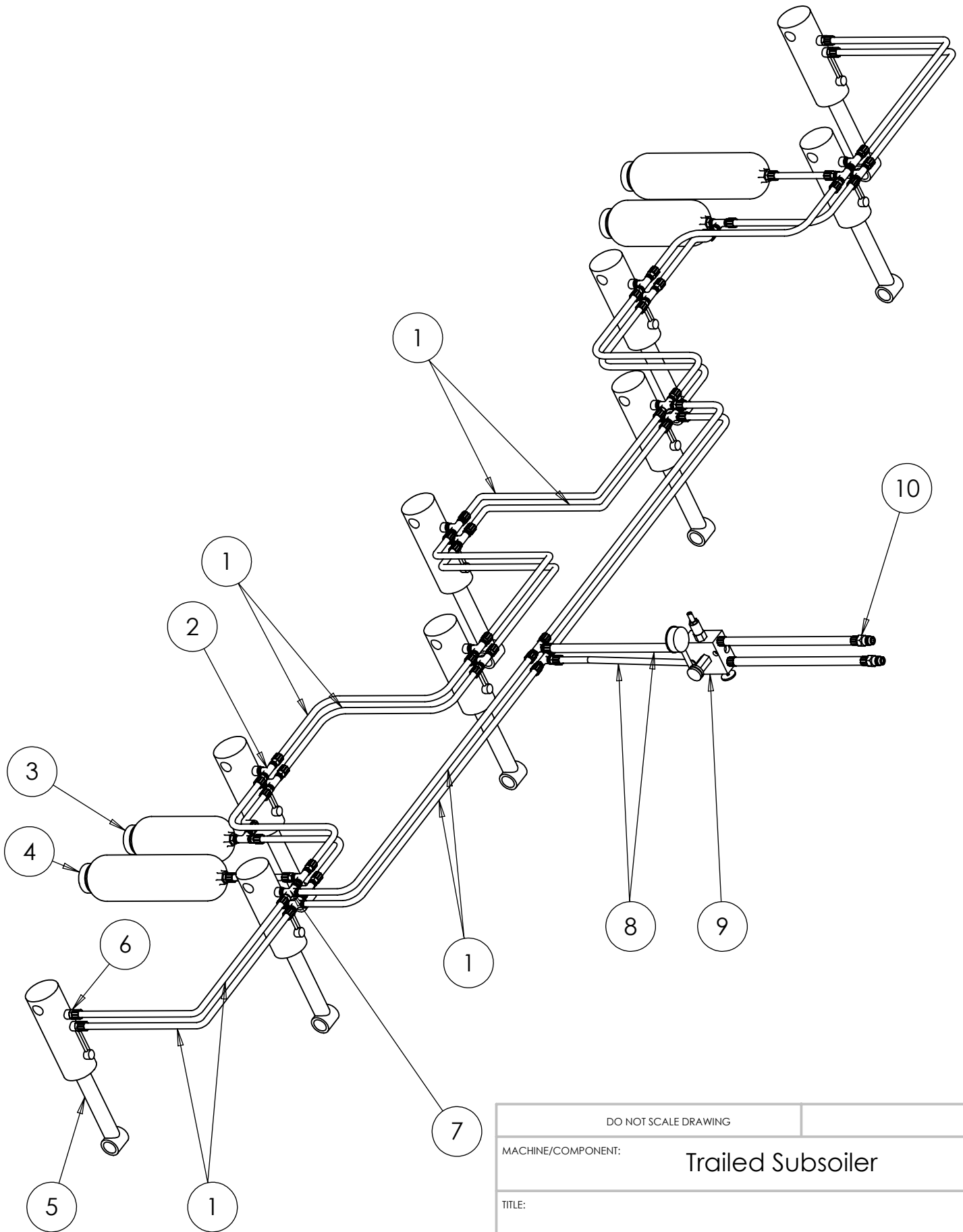
SCALE:1:1


REVISION:

DATE: 30/07/15

INITIAL: TW

# 5.14 Leg Auto-Reset Hydraulics



DO NOT SCALE DRAWING	
MACHINE/COMPONENT:	Trailed Subsoiler
TITLE:	Leg Auto-Reset Hydraulics
	
REVISION:	DATE: 30/07/15 INITIAL: TW

Drawings and design information found herein remain the sole property of Sumo UK Ltd. Reproductions may only be made with the permission of the owner.

## 5.14 Leg Auto-Reset Hydraulics Continued

ITEM:	PART NO:	DESCRIPTION:
1	SWH451	12L to 3/8 Hydraulic pipe
2	SWH451	12L to 3/8 Hydraulic pipe
3	SWH156	12L tee branch
4	SWH331	1.5L 80Bar Accumulater
5	SWH330	3L 80 bar Accumulatar
6	SWH 303	3/8m -12L Adaptor
7	SWH125	Quto Reset Ram
8	SWH468	12L to 3/8 Hydraulic pipe
9	SWH155	12L Cross junction
10	SWH467	12L Hydraulic pipe
11	SWH466	12L Hydraulic pipe
12	SWH426	Auto reset valve
13	SWH147	Male Hydraulic quick couple spool

DO NOT SCALE DRAWING

MACHINE/COMPONENT:

Trailed Subsoiler

TITLE:

Leg Auto-Reset Hydraulics  
Continued



Drawings and design information found herein remain the sole property of Sumo UK Ltd. Reproductions may only be made with the permission of the owner.

SCALE:1:1

REVISION:

DATE: 30/07/15

INITIAL: TW