



# Trailed Low Disturbance Subsoiler

## 2015 Operator Manual and Parts List



[www.sumo1.com](http://www.sumo1.com)

Redgates  
Melbourne  
York  
YO42 4RG  
Tel. 01759 319900  
Fax. 01759 319901



**1.0 Registration**

**To activate your SUMO Warranty**, you must complete this page and send it back to us at:

Sumo UK Ltd  
Redgates  
Melbourne  
York  
YO42 4RG  
Tel. 01759 319900  
Fax. 01759 319901

**(NO REGISTRATION = NO WARRANTY)**

SUMO SERIAL No:

For your own records.

(Serial plate on side of headstock)



**Trailed LDS Registration Document**

NAME:

ADDRESS:

Postcode:

Telephone Number:

DATE:

SUMO SERIAL No.

(Serial plate on side of headstock)

DEALERSHIP  
NAME AND  
BRANCH:

COMMENTS:



**In order to obtain your free pair of Sumo overalls and baseball cap** please fill in this form and send back to us at:

Sumo UK Ltd  
Redgates  
Melbourne  
York  
YO42 4RG  
Tel. 01759 319900  
Fax. 01759 319901



SUMO SERIAL No:

Overall size:  
tick where applicable

Small (38 chest)	<input type="checkbox"/>
Medium (42 chest)	<input type="checkbox"/>
Large (46 chest)	<input type="checkbox"/>
Extra large (50 chest)	<input type="checkbox"/>
XX Large (54 chest)	<input type="checkbox"/>
XXX Large (58 chest)	<input type="checkbox"/>

NAME:

ADDRESS



## **2.0 Summary**

The SUMO Trailed Low Disturbance Subsoiler has been developed to alleviate compaction in the subsurface region of most soil types. The design of the LDS enables this lift and fracture to be carried out whilst creating minimal surface disturbance.

When used in conjunction with the Sumoseeder the LDS becomes an effective tool for the establishment of OSR and other small seed crops.

### **Firstly**

A leading row of straight serrated discs cut through any surface trash eliminating any build up around the following subsoiler legs. The discs have adjustable depth positions which are easily altered via a one-bolt system.

### **Secondly**

The subsoiler legs then lift and fracture the soil alleviating any compaction. The legs are manufactured from 20mm Hardox 500, and have a pin adjustable depth of between 4”- 14” deep. The legs are available with either shear pin or hydraulic auto reset protection.

### **Finally**

There are 4 choices of packer for the LDS

F Type Flat shark fin packer ensures important surface aeration across the full working width of the machine.

T Type packer utilising pneumatic tractor tread tyres which are positioned to run directly behind each leg firming up the area around the slot made by the subsoiler leg.

R Type packer similar to the patented Sumo multipacka again designed to consolidate the soil behind the subsoiler leg.

M Type packer is the patented Sumo mulitpacka

Before using the SUMO LDS it is absolutely necessary that you read this Operators Manual and Safety Instructions attentively.

Specifications, descriptions and illustrations in this brochure are accurate, as known, at the time of publication but may be subject to change.



## Table of Contents

1.0 Registration	...Page 1
2.0 Summary	...Page 3
3.0 Safety	...Page 5
3.1 Qualification and Training	...Page 5
3.2 General Safety	...Page 6
3.3 Special Safety Instructions	...Page 6
3.4 Risk Assessment	...Page 7
4.0 Operation and Adjustment	...Page 8
4.1 Operation	...Page 8
4.2 Adjustments	...Page 8
4.3 Auto Reset Legs	...Page 9
5.0 Maintenance	...Page 10
5.1 Spares	...Page 10
5.2 Winter Storage	...Page 10
6.0 Parts and Assembly	...Page 11
6.1 Single Disc Unit	...Page 11
6.2 Front Disc Angle Adjustment	...Page 12
6.3 Packer Assembly	...Page 13
6.4 Packer Depth Assembly	...Page 14
6.5 Scraper Assembly	...Page 15
6.5.1 Double Ringed Roller Scraper	...Page 15
6.5.2 Ringed Roller Scraper	...Page 16
6.5.3 Flat Roller scraper	...Page 17
6.6 Auto Reset Assembly	...Page 18
6.7 Leg and Point Assembly	...Page 19
6.8 Arable Leg Assembly	...Page 20
6.9 Light Assembly	...Page 21
6.10 Wing Hydraulics	...Page 22
6.11 Wing Hydraulics Cont.	...Page 23
6.12 Drawbar Assembly	...Page 24
6.13 Optional Rear Drawbar	...Page 25
6.14 Stickers and Paint	...Page 26

### **3.0 Safety**

This manual contains basic advice which should be observed during setting-up, operation and maintenance. Therefore, this operating manual must be read by the personnel concerned prior to starting up, using the machine and be available at all times.

If safety instructions are not complied with, then this can lead to the risk of injury to yourself and others as well as damage to the environment or the machine. Non-compliance to the safety instructions can also lead to claims for damages becoming invalid.

#### **3.1 Qualification and Training**

- Ensure that only reliable, authorized personnel work on or with the machine. Statutory minimum age limits must be observed.
- Employ only trained or instructed staff; the individual responsibilities of the personnel concerning operation, setting up, maintenance and repair must be clearly established.
- Define the machine operators' responsibilities – also with regard to observing traffic regulations. The operator must have the authority to refuse any instructions issued by third parties, which contravene safety.
- Persons undergoing training or instruction or taking part in a general training course should not be allowed to work on or with the machine unless they are under the constant supervision of an experienced person.
- The use of spare parts, accessories and ancillary equipment not supplied and/or not approved by SUMO could have detrimental effects to the construction of the SUMO machine or on its functions and hence impair the active and/or passive driving and/or operational safety (accident prevention).
- SUMO shall not be responsible for any damage caused by the use of spare parts, accessories and ancillary equipment not supplied and/or approved by SUMO.
- Conversions of or modifications to the machine may only be carried out after consultation with SUMO.

### **3.2 General safety**

- Warning signs and other notices on the machine provide important information for the safe operation. Observing them will serve your safety.
- Before starting work, make yourself familiar with all the equipment and controls as well as their functions.
- The user should wear close-fitting clothing.
- Keep the machine and in particular the bearings clean to avoid risk of fire.
- Check around the machine before moving off or starting up (watch out for children!). Make sure you have adequate all-round visibility.
- Always match your speed to the local conditions. Avoid sudden turning manoeuvres when driving uphill or downhill or when travelling across a slope.
- Observe the respective regulations when using public roads.
- Take into account the wide overhang and/or the sideways force acting on the machine when turning or negotiating curves.

### **3.3 Special safety instructions**

- Take extreme care when hitching up or unhitching machine to/from the tractor.
- Never allow persons to stand between the tractor and the machine unless the tractor is secured against rolling away by means of parking brake and/or wheel chocks.
- During transport, secure the packer (using both pins) to prevent shock loading when encountering road undulations. Ensure stands are raised to their transport position.
- It is forbidden to allow persons to ride on the machine at any time. A safe distance should be maintained from the machine by observers when in work.
- Driving, steering and braking characteristics are influenced by trailed machines and ballast weights. Therefore, ensure adequate steering and braking ability.
- Never stand or work beneath suspended loads. Ensure stands are in position before commencing maintenance work.
- When making adjustments to the machines care should be taken not to trap any body parts in moving or pivoting parts.

**Model:** Low Disturbance Subsoiler

**Year:** 2014



### 3.4 RISK ASSESSMENT

**Date assessment written:** 22<sup>nd</sup> April 2014

**Assessor:** R. A. Hight

**Notes:** Ensure the operator manual is read and fully understood.

**Purpose of machine:** Primarily designed to alleviate compaction and improve soil structure with minimal surface disturbance.

**Description of machine:** A three-point-linkage mounted farm implement consisting of 3 major elements.

1. A row of rubber suspended, straight, notched discs.
2. A bank of staggered low disturbance subsoiler legs.
3. A toothed roller, optionally followed by a scarifying harrow.

All of the above is arranged in a heavy duty fabricated steel framework.

The Machine is designed to couple to a suitably powered tractor.

Hazard identified in using machine	Who might be harmed	Risk evaluation/level 1-5	Precautions in place	Further action required
Machine collision while in transport.	Operator, members of the public	2 - low_med	Tail lights, reflectors.	Take care when using in both field and road situations. Maintain good visibility at all times.
Trapped fingers during leg depth position change.	Operator	1 - low	Warnings, maintenance stands	Observe warning signs, maintain safe distance from moving parts, wear gloves. Ensure both of the stands are down. Clear excess soil (weight) from points before attempting to adjust legs.
Risk of crushing: - When coupling a tractor to the Sumo implement. - When changing points.	Operator	4 - med_high	Warnings, maintenance stands	Take extreme care when working on legs, changing depth, replacing points etc, make sure stands are down and the machine is on a suitable firm piece of land. Ensure tractor hydraulics are in good working order. Ensure tractor is safely positioned and the parking brake is engaged when coupling up to the Sumo implement.
Falling from machine	Operator	2 - low_med	Most alterations and maintenance do not require the operator the climb on the machine. If a seeder is fitted, then steps and a handrail will also be fitted to allow access.	Lower the machine to the floor to allow access for greasing discs, checking bearings etc...

## **4.0 Operation and Adjustment**

### **4.1 Operation**

Optimum soil conditioning will occur when the wings of the Trailed LDS are running horizontal (parallel with the ground). The recommended method to set up the machine to run level requires the desired working depth to be set via the pin adjustment on the packer, and then bring down the wings level. Add or remove slices from the drawbar ram. The chassis should run slightly nose end down.

Forward working speed should be governed by the local conditions as well as the finish produced by the Sumo LDS, generally the slower the working speed, the lower surface disturbance.

### **4.2 Adjustments**

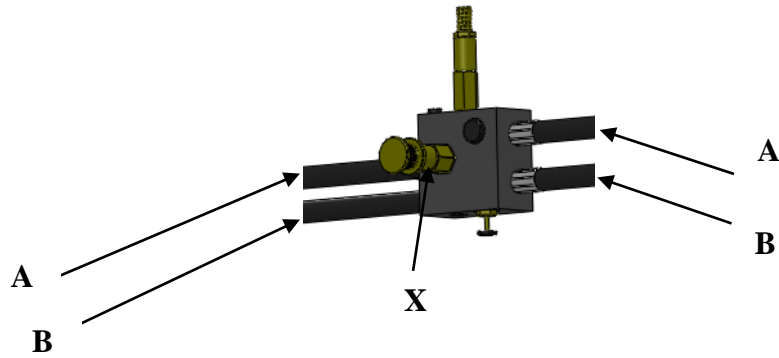
Depth adjustment of the Subsoiler legs on the LDS is achieved by removing the lynch pin and depth pin then lifting or lowering the leg by the handle at the top and replacing the pin in the appropriate hole. The two centre legs do not have a handle so must be adjusted from below, ensure the machine is safely secured before attempting to adjust these legs. The maximum depth of the legs is 350mm.

To adjust the working depth at a finer increment than the pin holes on the legs, the packer pins can be adjusted, to do this the machine must be lifted up clear of the ground to ensure that there is no weight on the packer pins and a new depth position can then be selected by moving the pin up or down. When depth adjustment is made in this way, the machine must be levelled up again using the slices on the drawbar ram.

**DO NOT TIGHTEN POINTS UP WITH AIR RACHETS OR OVER TIGHTEN WITH SPANNERS. EXCESSIVE TIGHTENING WILL RESULT IN POINTS CRACKING**



### 4.3 Auto Reset hydraulic circuit



- 1) To lift the legs up and out of the work position; pressurize line B (the lower of the two hoses entering the valve block & marked "B" on the valve itself). The legs will lift as oil is returned to the tractor through Line A.
- 2) To lower the legs back down and into the work position; pressurize line A, the legs will lower one by one. Keep pumping until all of the legs come to a stop at the end of their stroke. Keep pumping for a few more seconds and the two lines will then pressure up. Keep an eye on the gauge on the right hand side of the machine as this displays the leg trip resistant pressure. The system needs then to be put into the "float" or pressureless state between the tractor and the valve so that any back pressure from the tractor does not affect the preset valve pressures. Putting the system into "float" means the factory set pressure readings of 80bar on the full bore side of the ram (gauge on RHS of machine) and 20bar on the rod side of the ram. This is unless of course they have been adjusted to suit local conditions. The resistant pressure is adjustable up to a maximum of 150bar
- 3) To increase the trip resistance of the legs – the knob marked X should be wound in. The lift and lower process should then be repeated.

## **5.0 Maintenance**

The packer bearings should be greased with one pump once a week and after washing off.

The disc bearings should be greased until old grease is forced out once a week when in normal use and after washing off.

The condition of the subsoiler legs, the points and the discs should be regularly monitored in order to maintain the most efficient use of the machine.

The condition and position of the packer scrapers should also be observed in order to prevent soil building up on the packer. Ensure the scrapers are not touching the packer though, as this will add rolling resistance as well as causing premature wear of the packer.

Tyre Pressures should be set to 20PSI and regularly checked. Wheel studs should be checked they are tight after the first 10 hours operation and again regularly every week when in use. They should be tightened to a torque of 450Nm.

**Auto Reset** - Grease points can be found on all rams on auto reset machines. These require one pump of grease every 50 hours. Exposed chrome ram rods should also be greased at the end of each season to prevent these valuable parts from rusting and causing costly oil leaks.

### **5.1 Spares**

When ordering replacement parts please have your serial number, part numbers (listed in Section 6.0) and quantities at hand.

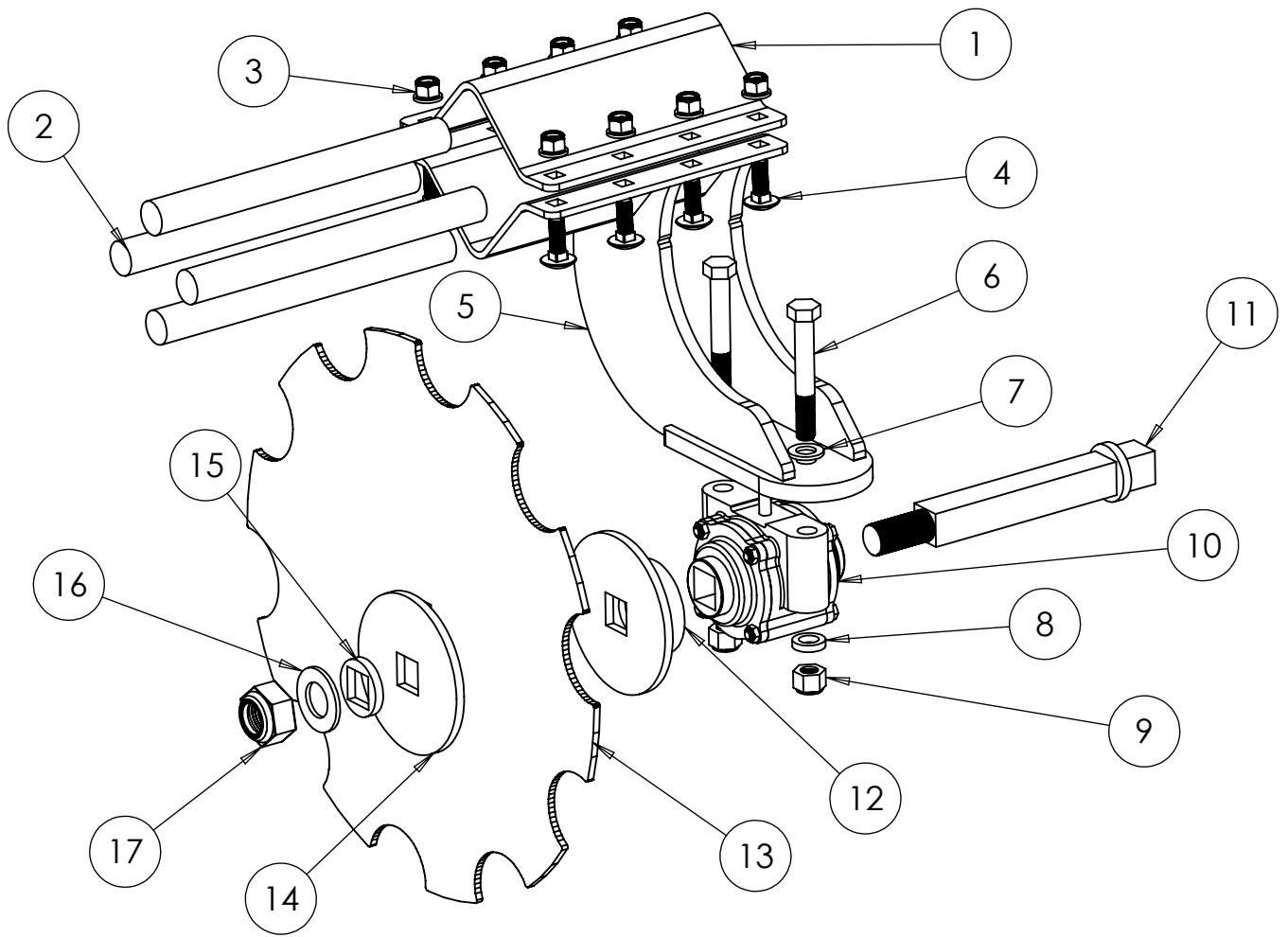
### **5.2 Winter storage**

When machines are to be parked up for the winter period, correct storage techniques are an important part of protecting the machine to ensuring a hassle free season. When the machine has finished work it should be cleaned down and washed off to remove all traces of soil.

After washing the Sumo LDS, the packer bearings should be greased with one pump and the disc bearings should be greased until old grease is forced out. Other grease points are located on all rams on auto reset machines and these should receive two or three pumps of grease.

Wheel studs should be checked they are tight and tyre pressure should also be checked to ensure there is not a slow puncture before entering storage.

When the machine is parked up a note should be made of what wearing parts require replacing ready for the next seasons work. The wearing parts can then be ordered in time ready for the next season's work in good time to avoid delays when the machine is required earlier than expected!



ITEM NO.	PART NO.	DESCRIPTION	QTY.
1	SW107	Clamp Plate	1
2	SWB103	Rubber	4
3	SWM12005	M12 Flanged Nut	8
4	SWM1235CHSQ	M12 x 35 Cup Head Square	8
5	SW547	Straight Disc Arm	1
6	SWM16110	M16 x 110 Bolt	2
7	SWM16001	M16 Washer	2
8	SW1153	M16 Thick Washer	2
9	SWM16004	M16 Nylock Nut	2
10	SWB102	Disc Bearing	1
11	SW1429	Single Disc Axle	1
12	SW546	Flat Washer and Dust Cover	1
13	SWB164	20" Straight Disc	1
14	SW548	Large Flat Washer	1
15	SW104	Small Washer	1
16	SWM30001	M30 Washer	1
17	SWM30004	M30 Nylock Nut	1

DO NOT SCALE DRAWING

MACHINE/COMPONENT:

LDS

TITLE:

Single Disc Unit



Drawings and design information found herein remain the sole property of Sumo UK Ltd. Reproductions may only be made with the permission of the owner.

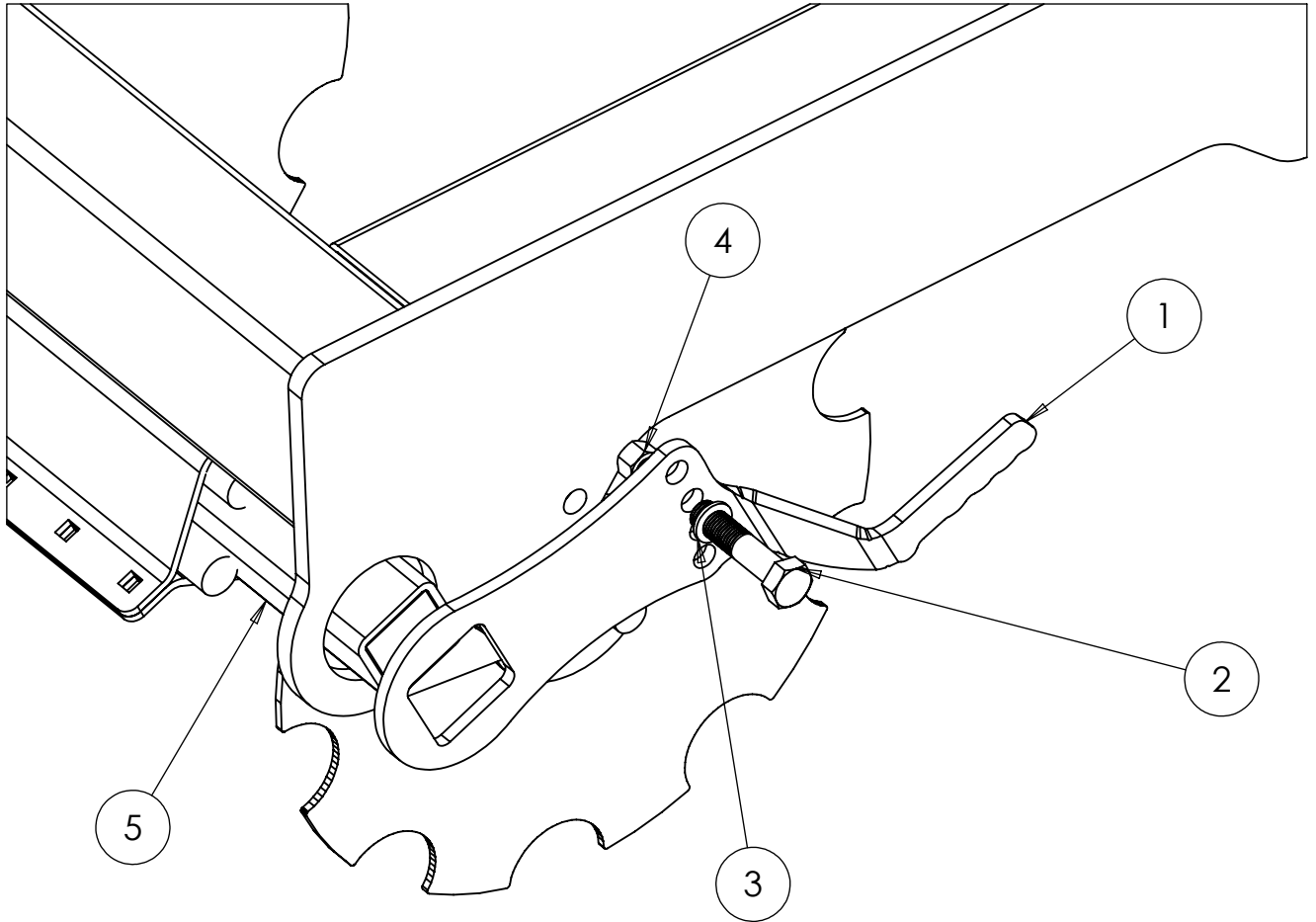
SCALE: 1:10

REVISION:


DATE: 24/04/14

INITIAL: TW

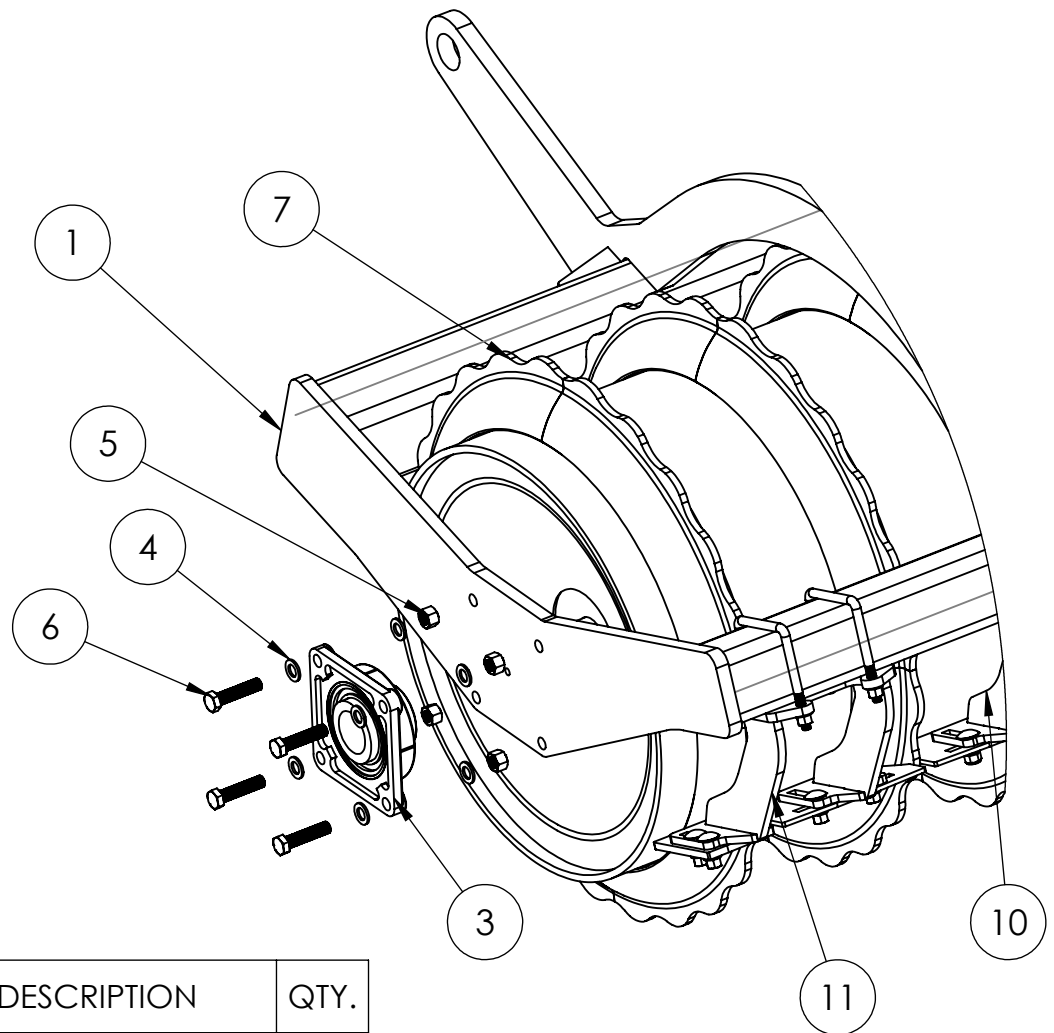
## 6.2 Front Disc Angle Adjustment



ITEM NO.	PART NO.	DESCRIPTION	QTY.
1	SW763	Front Disc Angle Arm	1
2	SWM1650	M16 x 50 Bolt	1
3	SWM16001	M16 Washer	2
4	SWM16004	M16 Nylock Nut	1
5	SW2432/3	Front Disc Bar	1

DO NOT SCALE DRAWING	
MACHINE/COMPONENT:	LDS
TITLE:	Front Disc Angle Adjustment
	
<small>Drawings and design information found herein remain the sole property of Sumo UK Ltd. Reproductions may only be made with the permission of the owner.</small>	
SCALE 1:5	REVISION:
DATE: 24/04/14	INITIAL: TW

## 6.3 Packer



ITEM NO.	PART NUMBER	DESCRIPTION	QTY.
1	SW1719	6m LDS Left Hand Packer Frame	1
2	SW1718	6m LDS Left Hand Packer Frame (Not shown)	1
3	SWB104	Trio Packer Bearing (60)	4
4	SWM16001	M16 Flat Washer	32
5	SWM16004	M16 Nyloc Nut	16
6	SWM1670	M16 x70mm Bolt	16
7	SW2440	6m LDS Multipacka	2
8	SW2014	Narrow double scraper hanger and half scraper (Not Shown)	2
9	SW1930	Triple Scraper Hanger Full Assembly Trailed Trio & Subsoiler (Not Shown)	2
10	SW1929.	Double Scraper Hanger Full Assembly 609 Trailed Trio	6
11	SWA261	1 & 1/2 scraper hanger	2

DO NOT SCALE DRAWING

MACHINE/COMPONENT:

Trailed LDS

TITLE:

Packer



Drawings and design information found herein remain the sole property of Sumo UK Ltd. Reproductions may only be made with the permission of the owner.

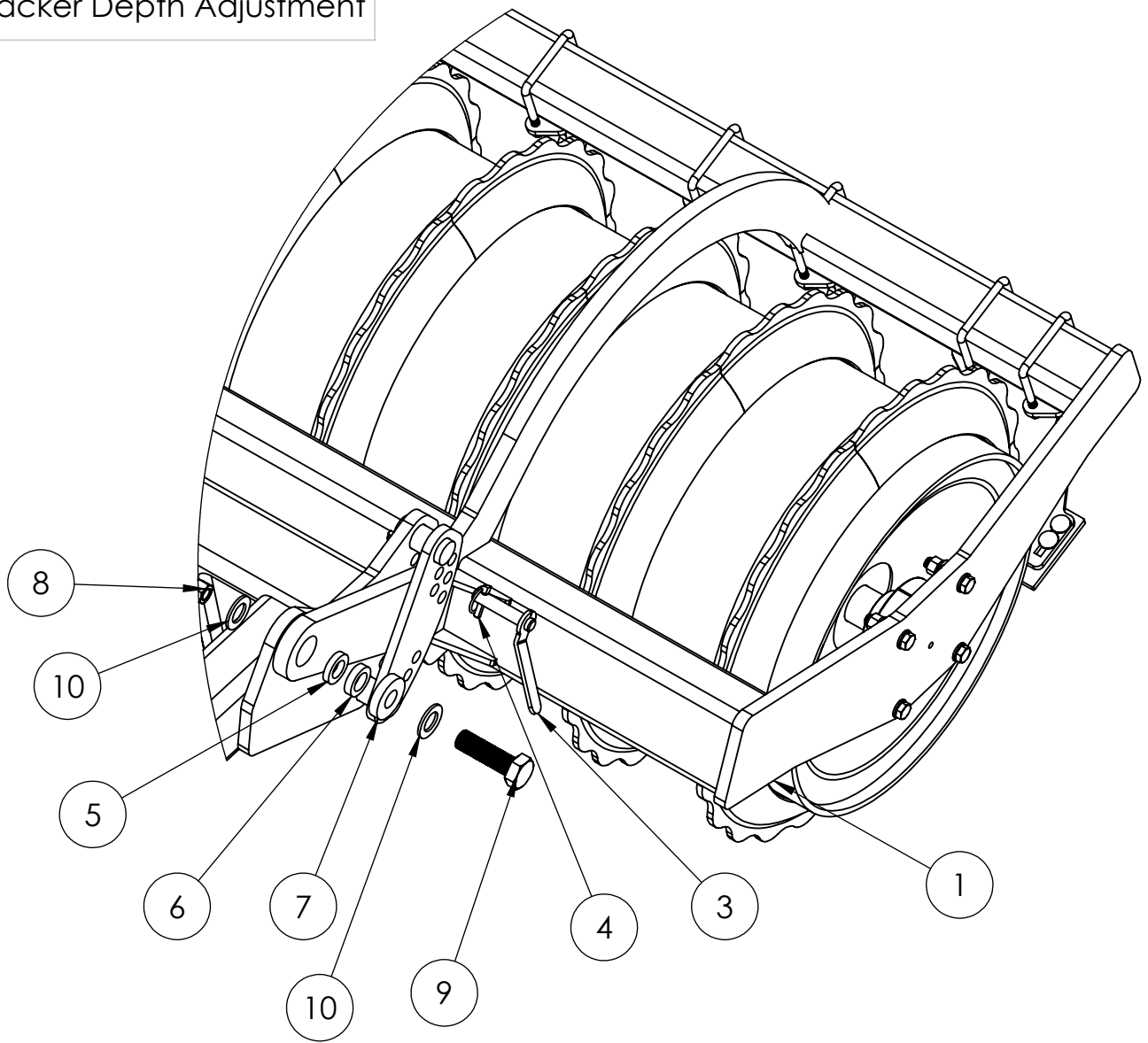
SCALE: 1:10

REVISION:

DATE: 17/02/2015

INITIAL: JF

## 6.4 Packer Depth Adjustment



ITEM NO.	PART NUMBER	DESCRIPTION	QTY.
1	SWA255	6m LDS Left Packer Frame Assembly	1
2	SWA260	6m LDS Right packer Frame Assembly	1
3	SWP20x92H	Packer Depth Pin	4
4	SWB105	Lynch Pin	4
5	SW722	10mm Small spacer	4
6	SW723	12mm Small Spacer	4
7	SW129	15mm Washer packer	4
8	SWM30004	M30 Nyloc Nut	8
9	SWM30100	M30 x 100mm Bolt	4
10	SWM30001	M30 Flat Washer	8

DO NOT SCALE DRAWING

MACHINE/COMPONENT:

Trailed LDS

TITLE:

# Packer Depth Adjustment



Drawings and design information found herein remain the sole property of Sumo UK Ltd. Reproductions may only be made with the permission of the owner.

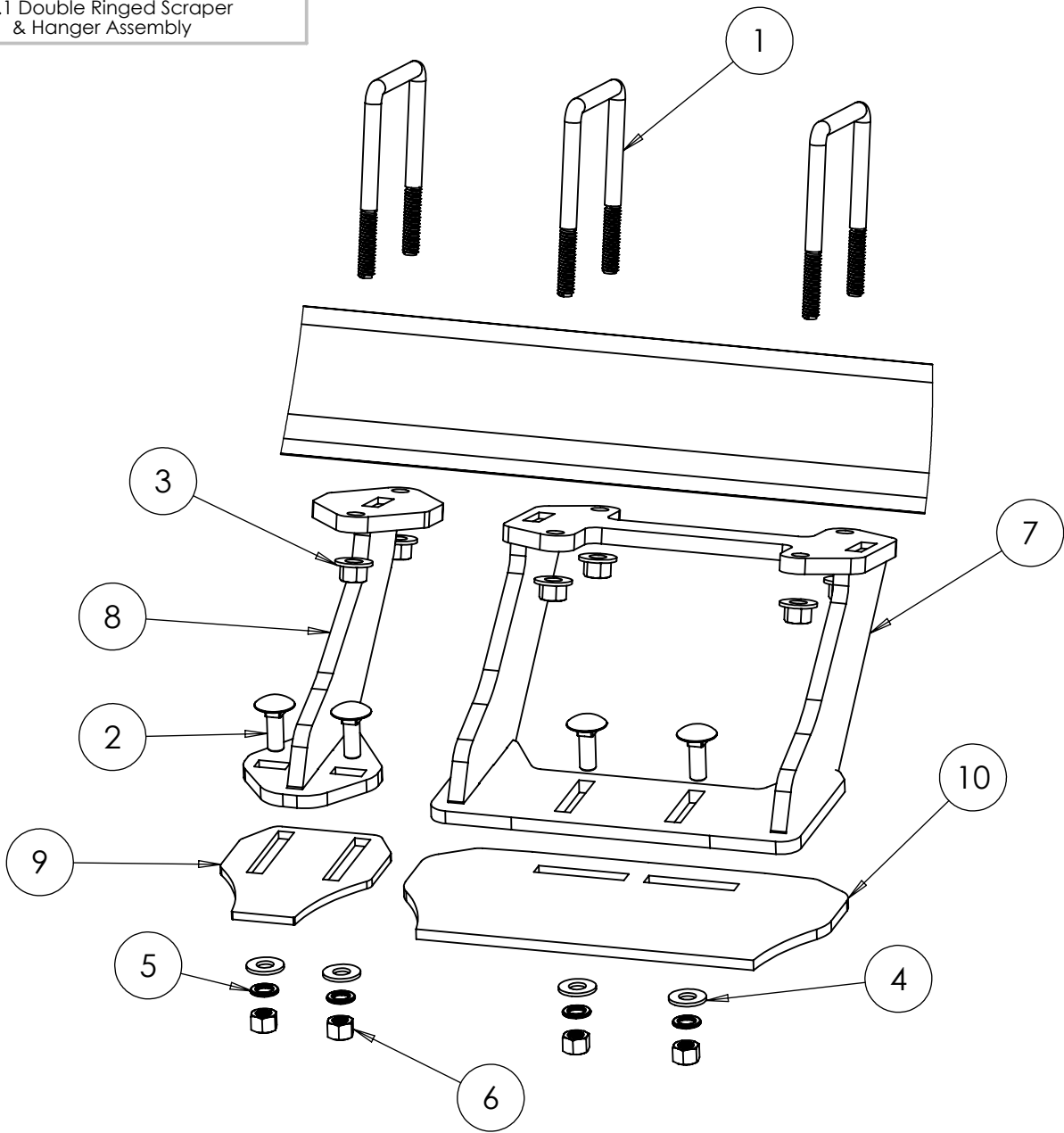
SCALE: 1:10

REVISION:

DATE: 17/02/2015

INITIAL: JF

6.5.1 Double Ringed Scraper  
& Hanger Assembly



ITEM NO.	PART NO.	DESCRIPTION	QTY.
1	SWM12100ub	M12 x 100 U Bolt	3
2	SWM1235CHSQ	M12 x 35 Cup Head Square	4
3	SWM12004	M12 Nylock Nut	6
4	SWM12001	M12 Flat Washer	4
5	SWM12002	M12 Spring Washer	4
6	SWM12003	M12 Plain Nut	4
7	SW1549	Large Scraper Hanger	1
8	SW1967	Small Scraper Hanger	1
9	SW1053	Small Scraper	1
10	SW1975	Large Scraper	1

DO NOT SCALE DRAWING

MACHINE/COMPONENT:

LDS - Double Ringed Roller

TITLE:

Scraper Assembly



Drawings and design information found herein remain the sole property of Sumo UK Ltd. Reproductions may only be made with the permission of the owner.

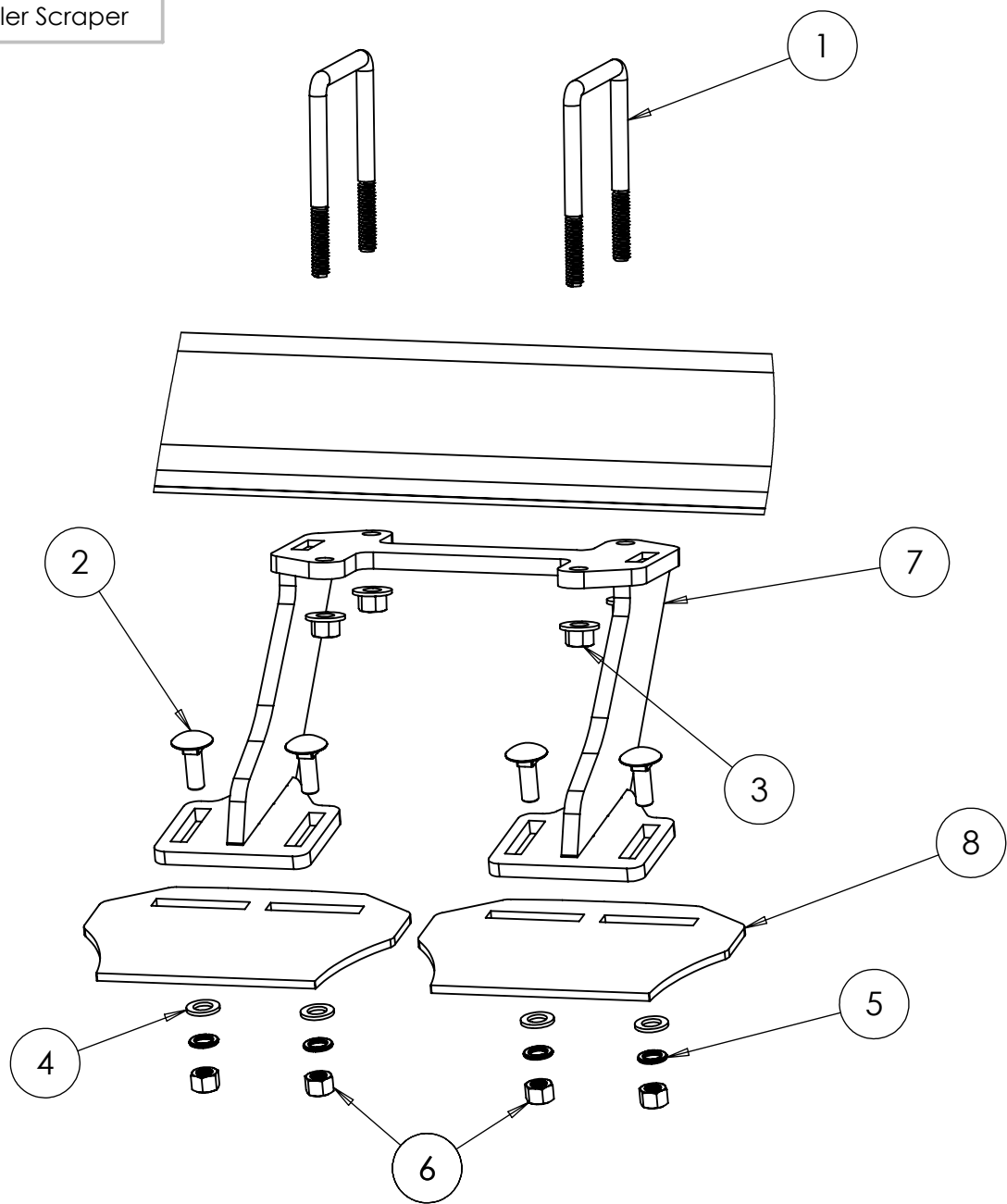
SCALE: 1:5

REVISION:

DATE: 03/09/14

INITIAL: TW

6.5.2 Ringed Roller Scraper



ITEM NO.	PART NO.	DESCRIPTION	QTY.
1	SWM12100ub	M12 x 100 U Bolt	2
2	SWM1235CHSQ	M12 x 35 Cup Head Square Bolt	4
3	SWM12004	M12 Nylock Nut	4
4	SWM12001	M12 Flat Washer	4
5	SWM12002	M12 Spring Washer	4
6	SWM12003	M12 Plain Nut	4
7	SW1044	Double Scraper Hanger	1
8	SW1043	Scraper	2

DO NOT SCALE DRAWING

MACHINE/COMPONENT:

LDS - Ringed Roller

TITLE:

Scraper Assembly



Drawings and design information found herein remain the sole property of Sumo UK Ltd. Reproductions may only be made with the permission of the owner.

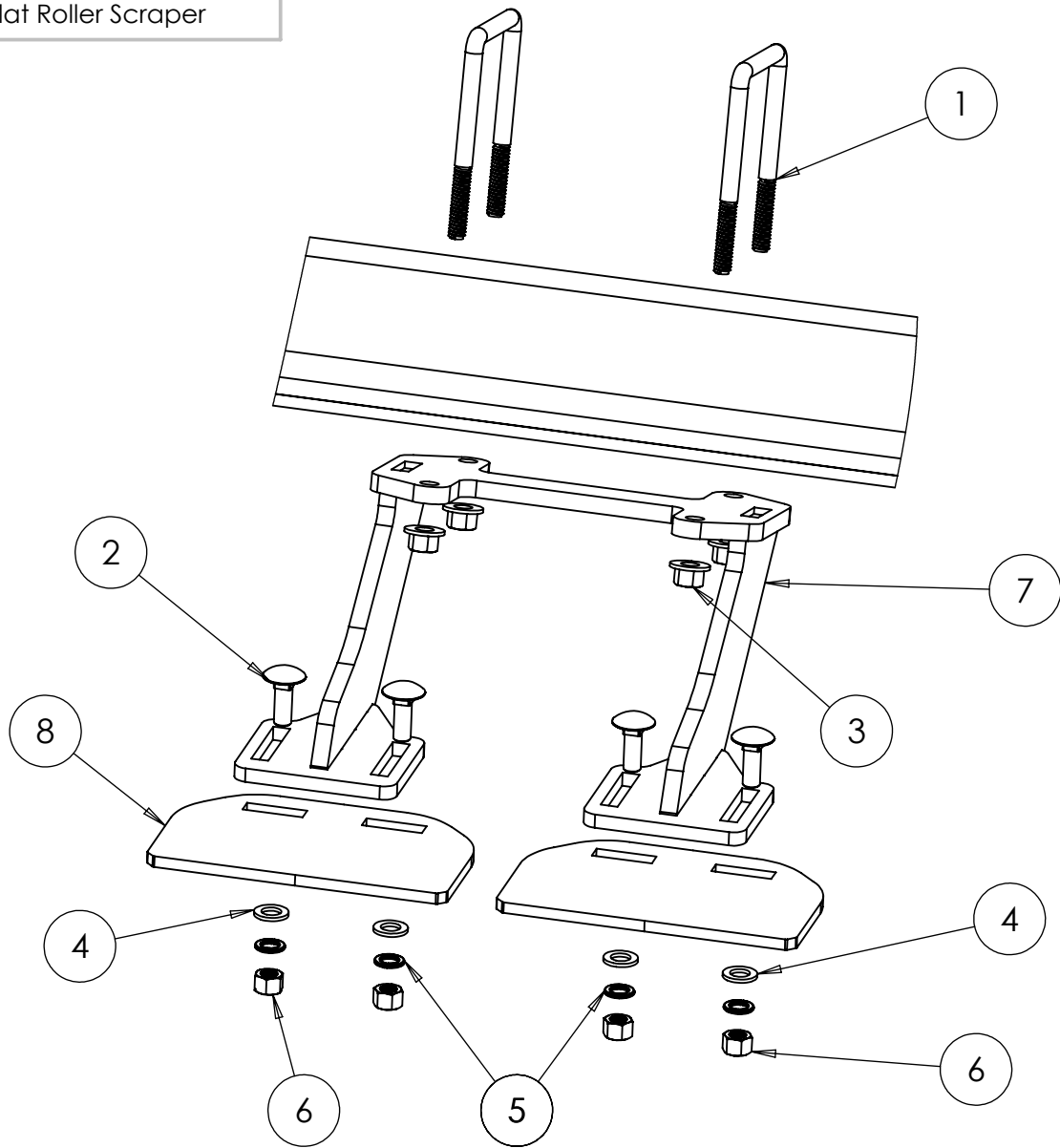
SCALE: 1:5

REVISION:


DATE: 03/09/14

INITIAL: TW

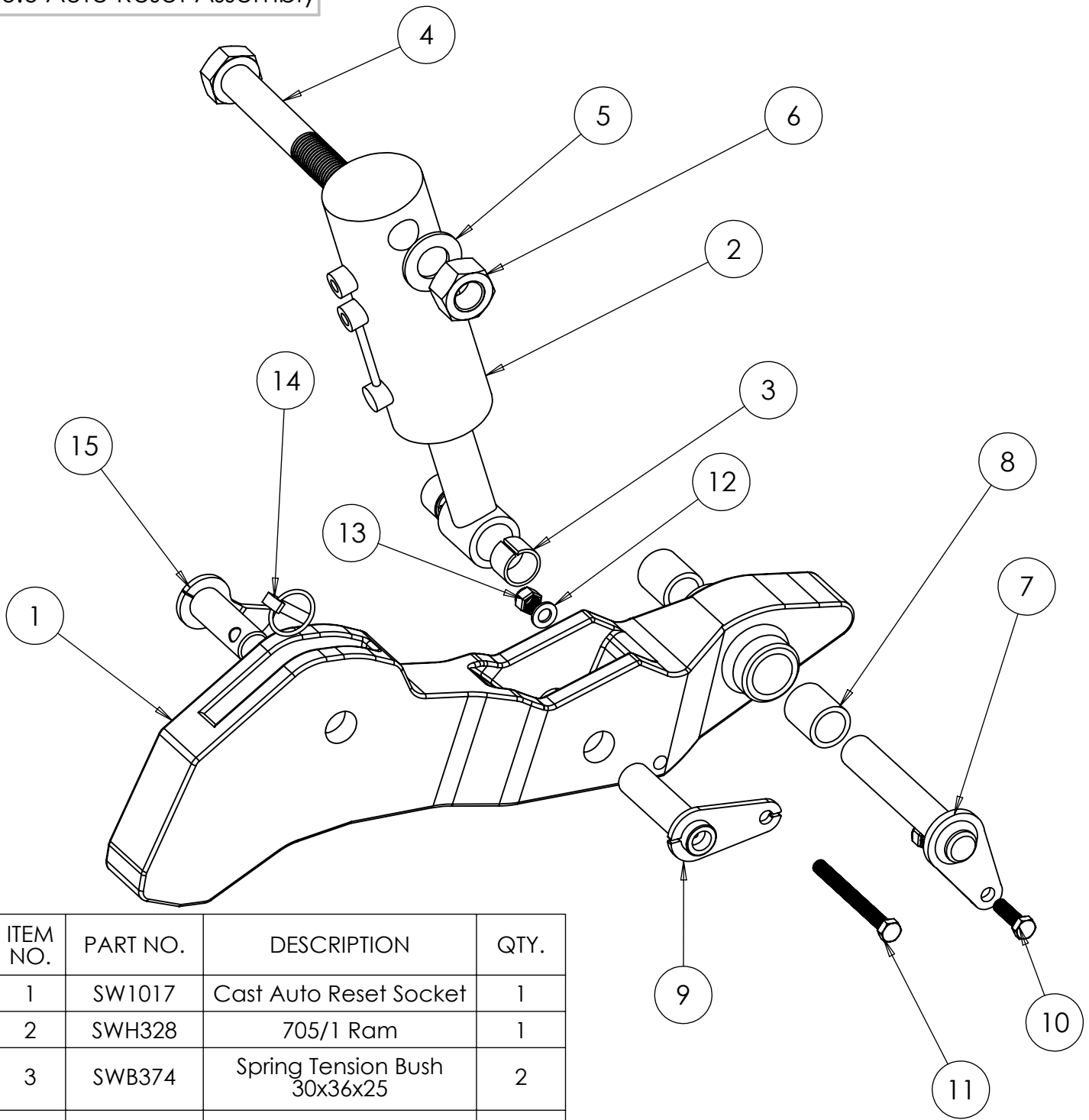
6.5.3 Flat Roller Scraper



ITEM NO.	PART NO.	DESCRIPTION	QTY.
1	SWM12100ub	M12 x 100 U Bolt	2
2	SWM1235CHSQ	M12 x 35 Cup Head Square Bolt	4
3	SWM12004	M12 Nylock Nut	4
4	SWM12001	M12 Flat Washer	4
5	SWM12002	M12 Spring Washer	4
6	SWM12003	M12 Plain Nut	4
7	SW1044	Double Scraper Hanger	1
8	SW1976	Scraper	2

DO NOT SCALE DRAWING	PRE
MACHINE/COMPONENT: LDS - Flat Roller Packer	
TITLE: Scraper Assembly	
	
<small>Drawings and design information found herein remain the sole property of Sumo UK Ltd. Reproductions may only be made with the permission of the owner.</small>	
SCALE: 1:5	REVISION:
DATE: 02/09/14	INITIAL: TW

## 6.6 Auto Reset Assembly



ITEM NO.	PART NO.	DESCRIPTION	QTY.
1	SW1017	Cast Auto Reset Socket	1
2	SWH328	705/1 Ram	1
3	SWB374	Spring Tension Bush 30x36x25	2
4	SWM30200	M30 x 200 Bolt	1
5	SWM30001	M30 Washer	1
6	SWM30004	M30 Nylock Nut	1
7	SW183	30mm x 170mm Tabbed Pin	1
8	SW188	PB1 Bush 30x40x45	2
9	SW1192/ SW1192R	30mm x 120mm Tabbed Grease Pin c/w grease nipple	1
10	SWM1240	M12 x 40 Bolt	1
11	SWM12130	M12 x 130 bolt	1
12	SWM12001	M12 Washer	2
13	SWM12004	M12 Nylock Nut	2
14	SWB105	Lynch Pin	1
15	SW451	Leg Depth Pin	1

DO NOT SCALE DRAWING

MACHINE/COMPONENT:

LDS

TITLE:

# Auto Reset Assembly



Drawings and design information found herein remain the sole property of Sumo UK Ltd. Reproductions may only be made with the permission of the owner.

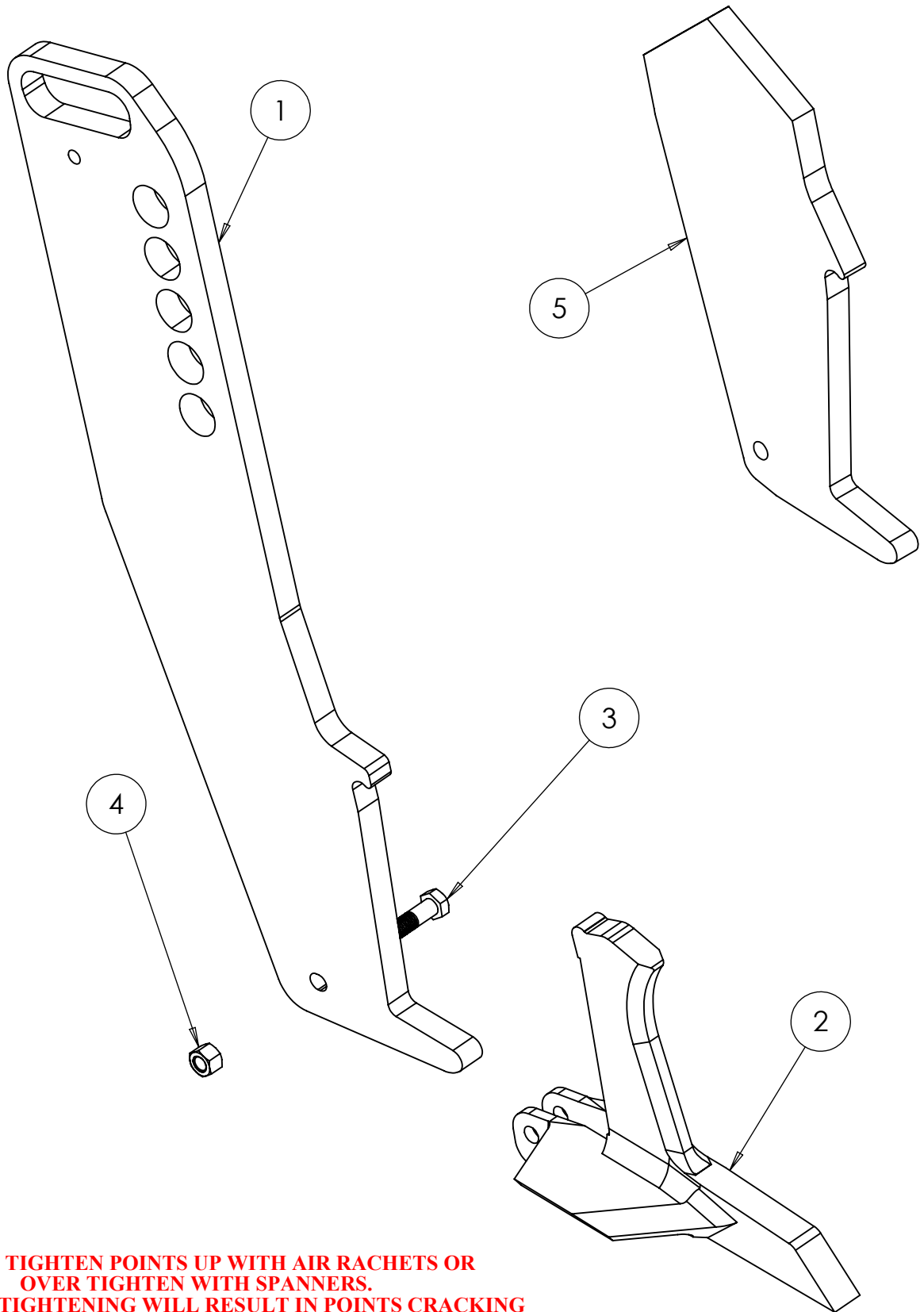
Scale 1:5

REVISION:


DATE: 24/04/14

INITIAL: TW

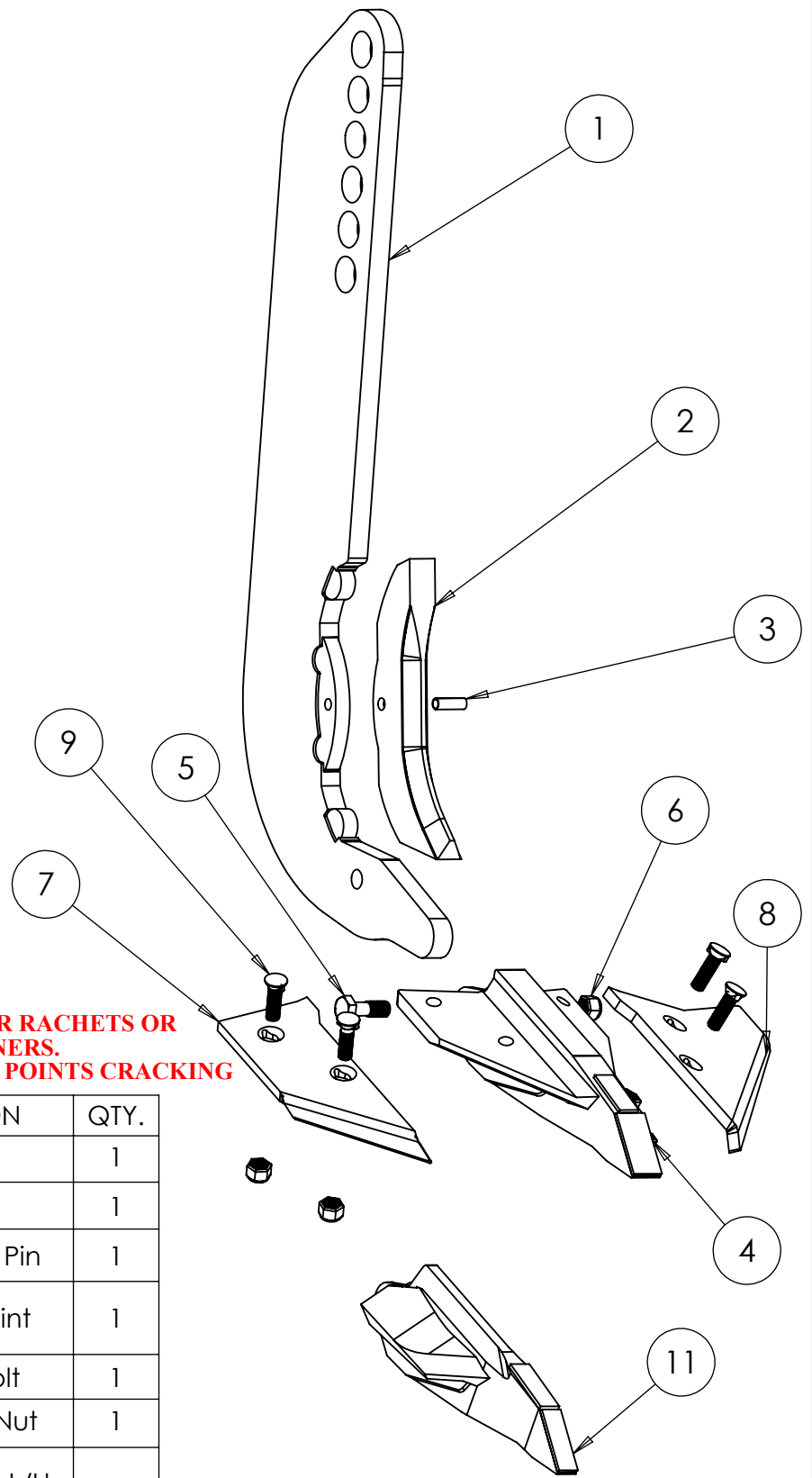
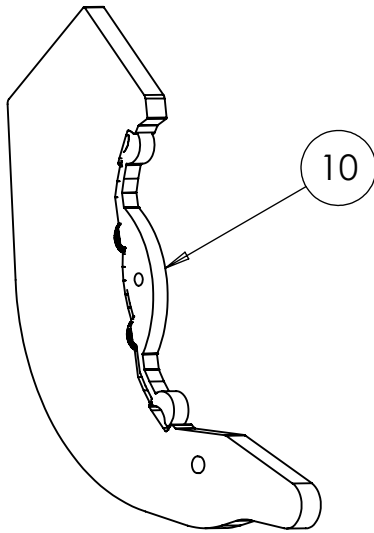
6.7 Leg and Point Assembly



**DO NOT TIGHTEN POINTS UP WITH AIR RACHETS OR  
OVER TIGHTEN WITH SPANNERS.  
EXCESSIVE TIGHTENING WILL RESULT IN POINTS CRACKING**

ITEM NO.	PART NO.	DESCRIPTION	QTY.	DO NOT SCALE DRAWING	
1	SW1151	Leg	1	MACHINE/COMPONENT: LDS	
2	SW1116	Cast Point	1	TITLE: Leg and Point Assembly	
3	SWM1250	M12 x 50 Bolt	1	 Drawings and design information found herein remain the sole property of Sumo UK Ltd. Reproductions may only be made with the permission of the owner.	
4	SWM12004	M12 Nylock Nut	1		
5	SW1173	Weld on Leg Bottom	1	SCALE 1:4	REVISION:
				DATE: 26/10/12	INITIAL: TW

## 6.8 Arable Leg Assembly



**DO NOT TIGHTEN POINTS UP WITH AIR RACHETS OR OVER TIGHTEN WITH SPANNERS. EXCESSIVE TIGHTENING WILL RESULT IN POINTS CRACKING**

ITEM NO.	PART NO.	DESCRIPTION	QTY.
1	SW1046	Leg	1
2	SW1048	Cast Shin	1
3	SWB183	M10 x 30 Roll Pin	1
4	SW1050	Concord Point	1
5	SWM1250	M12 x 50 Bolt	1
6	SWM12004	M12 Nylock Nut	1
7	SWB401/400	4" R/H Wing & L/H Wing (Not Shown)	2
8	SWB366/367	8" L/H Wing & R/H Wing (Not Shown)	2
9	SWM1235TN	M12 x 35 Twin Nibbed Bolt c/w Plain Nut	4
10	SW1047	Weld on Leg Bottom	1
11	SWB441	Low Disturbance Point	1

DO NOT SCALE DRAWING

MACHINE/COMPONENT:

LDS

TITLE:

Arable Leg Assembly



Drawings and design information found herein remain the sole property of Sumo UK Ltd. Reproductions may only be made with the permission of the owner.

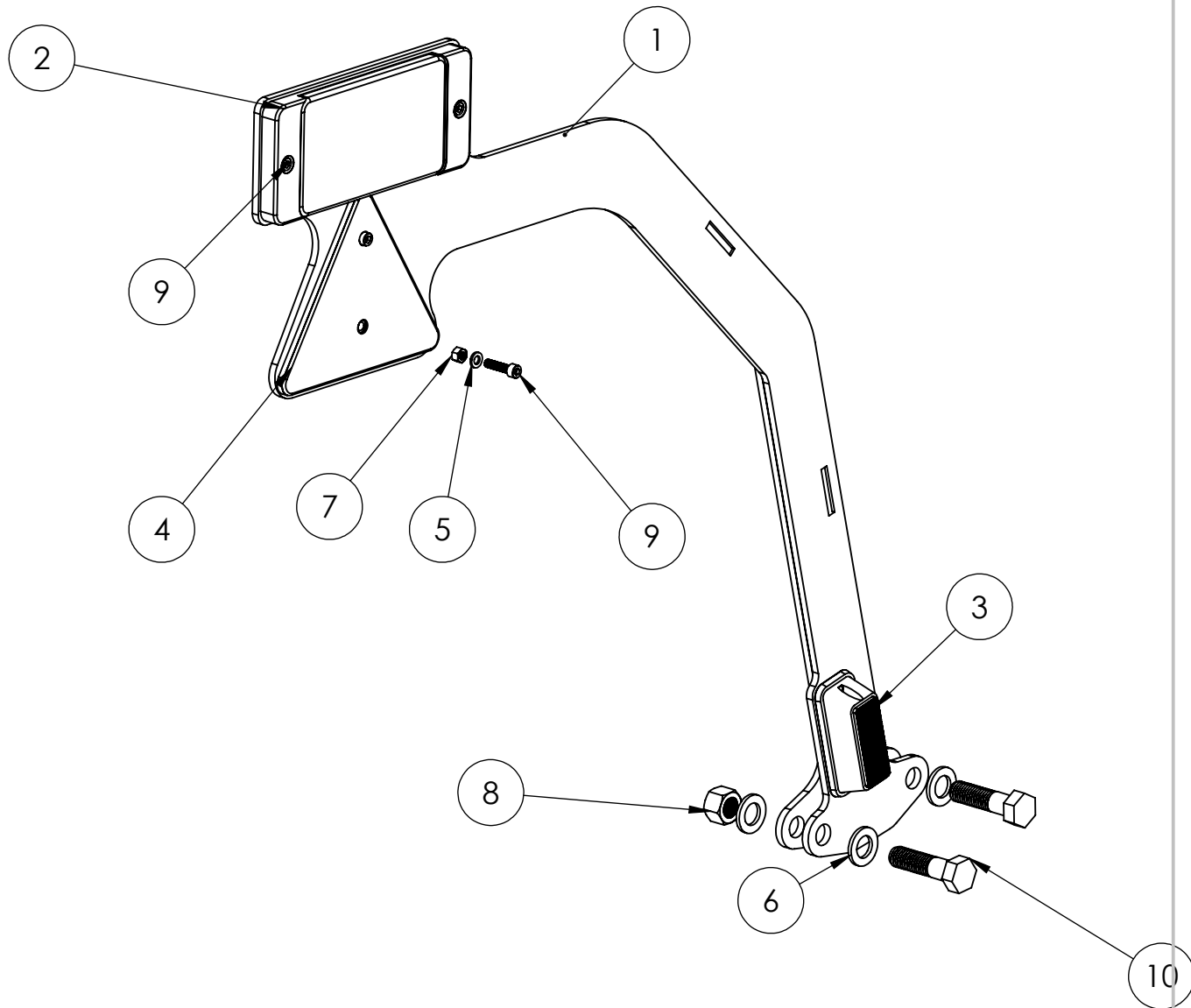
SCALE 1:6

REVISION:

DATE: 24/04/14

INITIAL: TW

## 6.9 Lights



ITEM NO.	PART NUMBER	DESCRIPTION	QTY.
1	SW445	Trailed machine light bracket	1
2	SWB715	Rear LED Light Unit	1
3	SWB274	LED Warning Light	1
4	SWB162	Reflector Triangle	1
5	SWM6001	M6 Flat Washer	4
6	SWM16001	M16 Flat Washer	4
7	SWM6004	M6 Nyloc Nut	4
8	SWM16004	M16 Nyloc Nut	2
9	SMW625hex	M6 x 25mm Hex head bolt	4
10	SWM1660	M16 x 60mm bolt	2

DO NOT SCALE DRAWING

MACHINE/COMPONENT:

Trailed LDS

TITLE:

Lights



Drawings and design information found herein remain the sole property of Sumo UK Ltd. Reproductions may only be made with the permission of the owner.

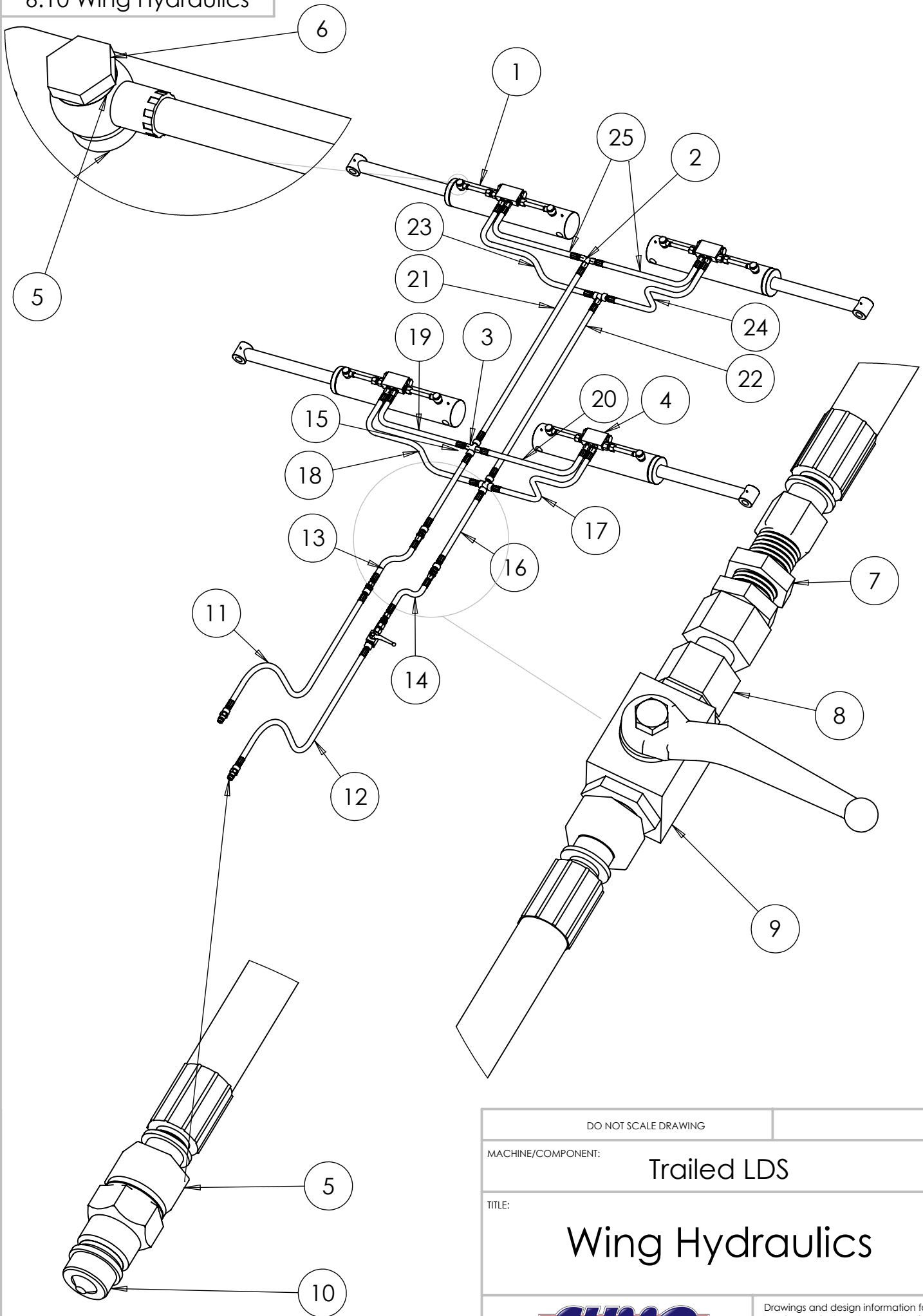
SCALE: 1:5


REVISION:

DATE: 17/02/2015

INITIAL: JF

# 6.10 Wing Hydraulics



DO NOT SCALE DRAWING	
MACHINE/COMPONENT:	Trailed LDS
TITLE:	Wing Hydraulics
	
<small>Drawings and design information found herein remain the sole property of Sumo UK Ltd. Reproductions may only be made with the permission of the owner.</small>	
SCALE:1:50	REVISION:
DATE:18/02/2015	INITIAL: JF

## 6.11 Wing Hydraulics Continued

ITEM:	PART NO:	DESCRIPTION:	QTY:
1	SWH132	706/4 ram	4
2	SWH167	15L tee branch	1
3	SWH199	15L cross	1
4	SWH154	pilot operated check valve	4
5	SWH142	1/2" dowty washer	18
6	SWH143	1/2" banjo bolt	8
7	SWH144	15L bulk head fitting	4
8	SWH171	15L female to female fitting	1
9	SWH205	12L tap	1
10	SWH147	male quick coupler	2
11	SWH437	12L female to 1/2"male 4000mm	1
12	SWH438	12L female to 1/2" male 3910mm	1
13	SWH439	12L female to female 510mm	1
14	SWH440	12L female to female 570mm	1
15	SWH441	12L female to female 690mm	1
16	SWH442	12L female to female 610mm	1
17	SWH443	12Lfemale to female 880mm	1
18	SWH443	12L female to female	1
19	SWH444	12L female to female 800mm	1
20	SWH444	12L female to female 800mm	1
21	SWH445	12L female to female 1340mm	1
22	SWH446	12L female to female 1300mm	1
23	SWH447	12L female to female 725mm	2
24	SWH448	12L female to female 690mm	2

DO NOT SCALE DRAWING

MACHINE/COMPONENT:

Trailed LDS

TITLE:

Wing Hydraulics (Continued)



Drawings and design information found herein remain the sole property of Sumo UK Ltd. Reproductions may only be made with the permission of the owner.

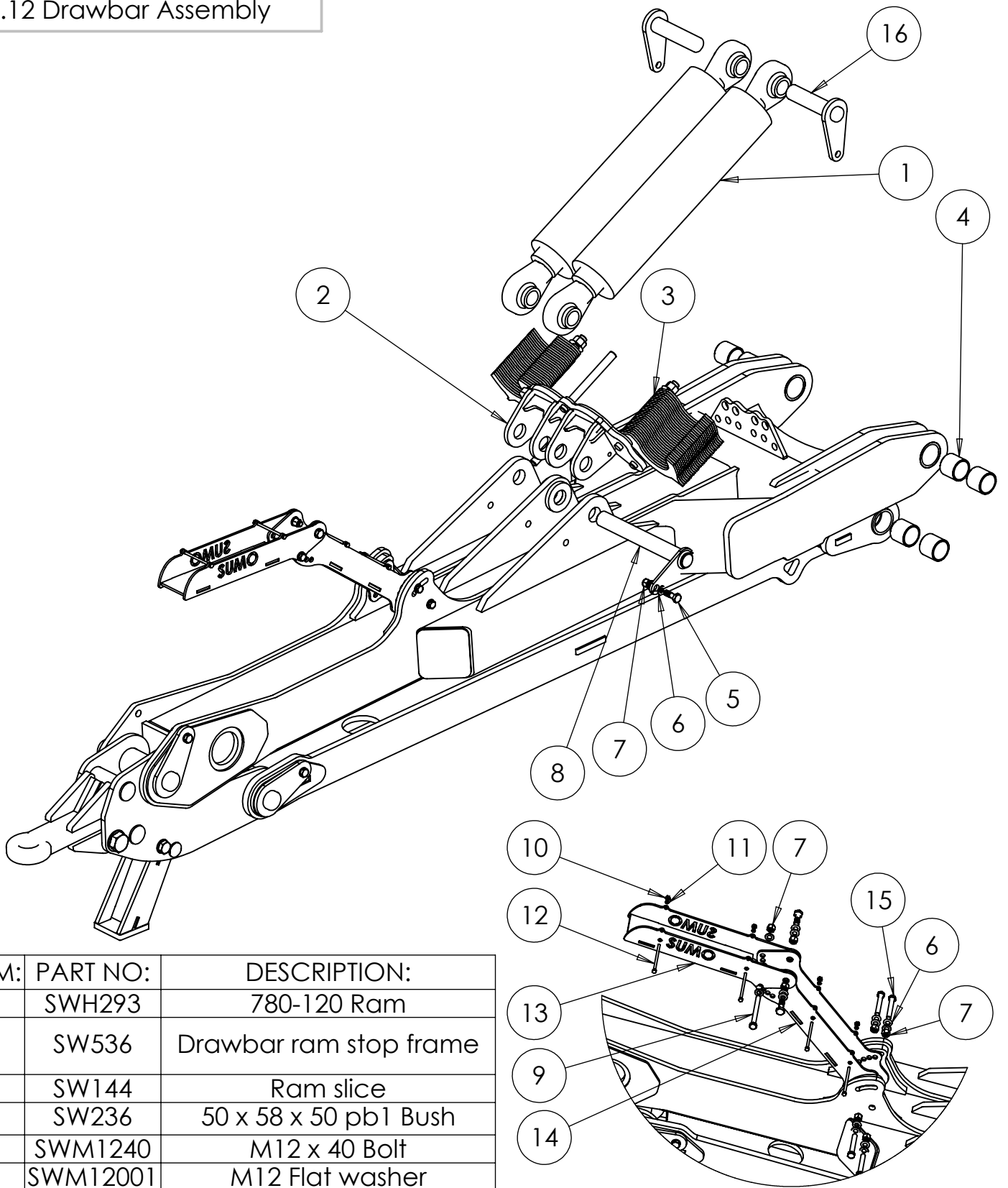
SCALE:1:1

REVISION:

DATE: 18/02/2015

INITIAL: JF

# 6.12 Drawbar Assembly




ITEM:	PART NO:	DESCRIPTION:
1	SWH293	780-120 Ram
2	SW536	Drawbar ram stop frame
3	SW144	Ram slice
4	SW236	50 x 58 x 50 pb1 Bush
5	SWM1240	M12 x 40 Bolt
6	SWM12001	M12 Flat washer
7	SWM12004	M12 Nylock nut
8	SW143	40 x 160 tabbed pin
9	SWM12130	M12 x130 Bolt
10	SWM6004	M6 Nylock nut
11	SW6001	M6 Flat washer
12	SWM12130	M12 X 130 Bolt
13	SW379	Pipe holder top section
14	SW380	Pipe holder lower section
15	SWM1250	M12 x 50 Bolt
16	SW420	40 X 200 Tabbed pin

DO NOT SCALE DRAWING

MACHINE/COMPONENT: **Trailed LDS**

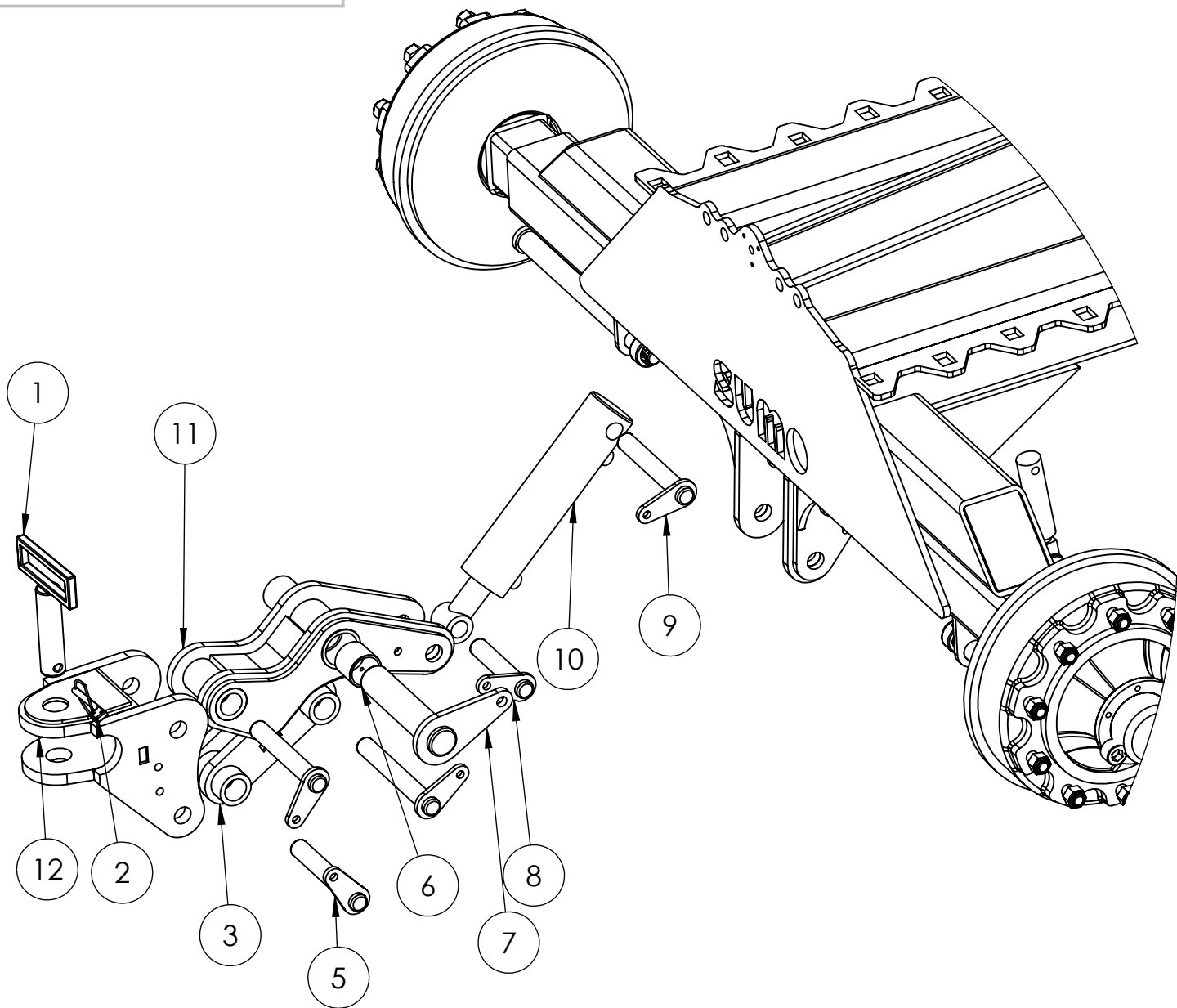
TITLE: **Drawbar**




Drawings and design information found herein remain the sole property of Sumo UK Ltd. Reproductions may only be made with the permission of the owner.

REVISION:      DATE: 18/02/2015      INITIAL: JF







6.13 Optional Rear Drawbar



Item No	Part No	Description	Qty
1	SW1258	40mm Drawbar Pin	1
2	SW576	Safety Lynch Pin	1
3	SW1257	Pivot Arm	1
4	SWB176	30mmx40mmx45mm Oilite Bush	6
5	SW186	214mm x 30mm x Tabbed Pin	3
6	SWB142	50mmx50mmx58mm Oilite Bush	2
7	SW139	225mm x 50mm Tabbed Pin	1
8	SW185	145mm x 30mm Tabbed Pin	1
9	SW186	190mm x 30mm Tabbed Pin	1
10	SWH125	705/2 Ram	1
11	SW717	Pivot Arm	1
12	SW749	Rear Drawbar Jaws	1

DO NOT SCALE DRAWING	
MACHINE/COMPONENT:	Trailed LDS
TITLE:	Rear Drawbar
	
Drawings and design information found herein remain the sole property of Sumo UK Ltd. Reproductions may only be made with the permission of the owner.	
SCALE:1:25	REVISION:
DATE:18/02/2015	INITIAL: JF

## 6.14 Stickers and Paint

Sticker	Description	Quantity	Part No.
	Big Sumo horizontal sticker 450 x 125mm	2	SWB125
	Big Union Jack sticker 150 x 100mm	2	SWB127
	Vertical Sumo sticker 80 x 295mm	2	SWB128
	Small Union Jack sticker	2	SWB129
	Small Sumo Reflective Sticker	2	SWB199
	Small Sumo Horizontal Sticker	4	SWB130
	Small LDS 6 Sticker	2	SU117
	Large LDS 6 Sticker	2	SU116
Sumo touch up paint	Sumo Red	1/2 Litre	SWB131
	Sumo Black	1/2 Litre	SWB132