

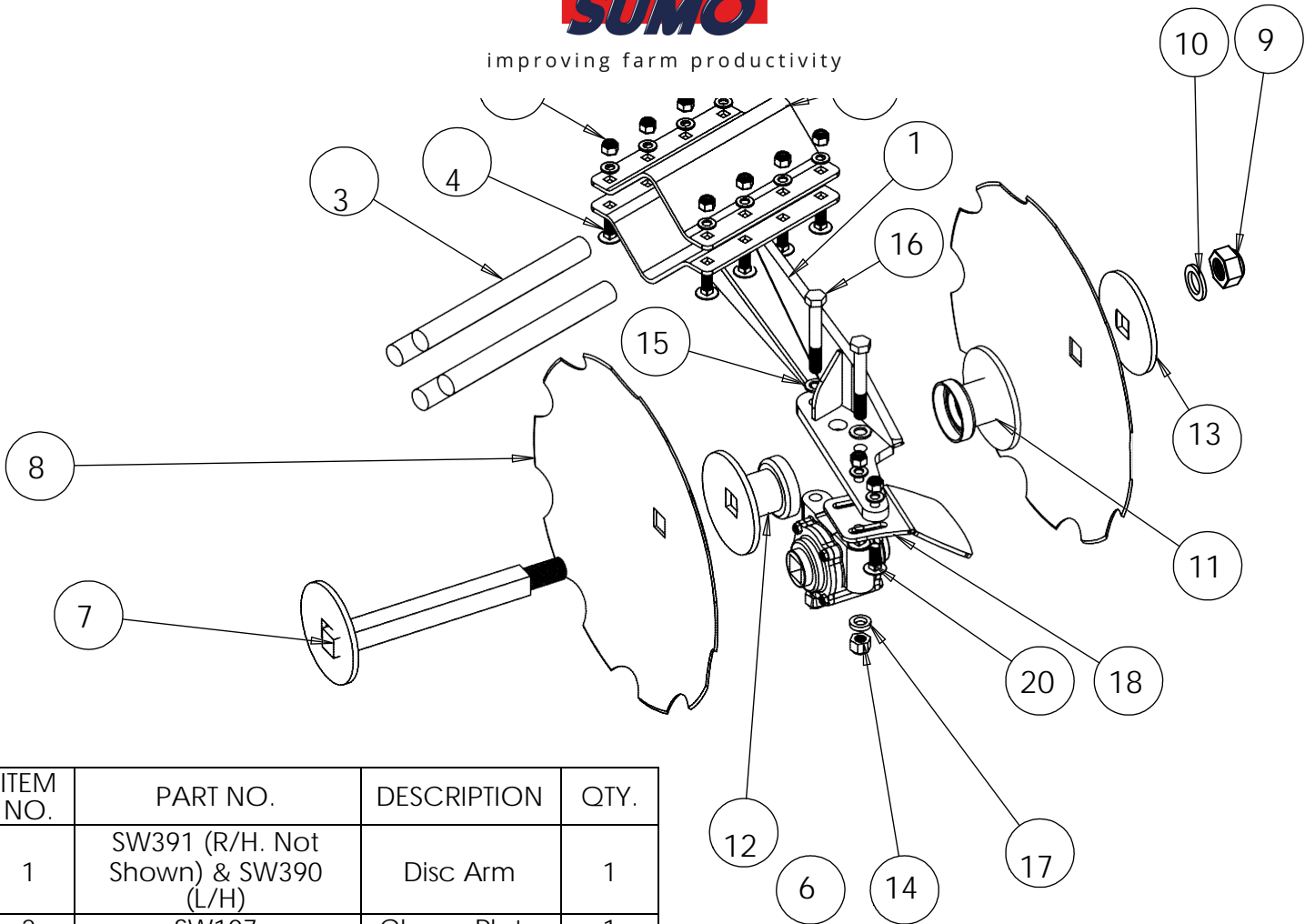
VAXIO PARTS



improving farm productivity



improving farm productivity



ITEM NO.	PART NO.	DESCRIPTION	QTY.
1	SW391 (R/H. Not Shown) & SW390 (L/H)	Disc Arm	1
2	SW107	Clamp Plate	1
3	SWB679	Triangular Rubber	4
4	SWM1235CHSQ	M12 x 35 Cup Head Square	10
5	SWM12005	M12 Flanged Nut	10
6	SWB102	Bearing	1
7	SW101	Twin Disc Axle	1
8	SWB101	20" Scalloped Disc	2
9	SWM3004	M30 Nylock Nut	1
10	SWM30001	M30 Washer	1
11	SW103	Dust Cover and Convexed Disc	1
12	SW102	Dust Cover and Concaved Disc	1
13	SW108	Disc Axle Washer	1
14	SWM16006	M16 Locking Nut	2
15	SWM16001	M16 Washer	2
16	SWM16120	M16 x 120 Bolt	2
17	SW1153	M16 Washer (Thick)	2
18	SW646	Disc Scraper	1
19	SWB184	18" Scalloped Disc (end of disc row, Not Shown)	1
20	SWM1240CHSQ	M12 x 40 Cup Head Square	2

DO NOT SCALE DRAWING

MACHINE/COMPONENT:

TITLE:

Twin Disc Unit Assembly



Drawings and design information found herein remain the sole property of Sumo UK Ltd. Reproductions may only be made with the permission of the owner.

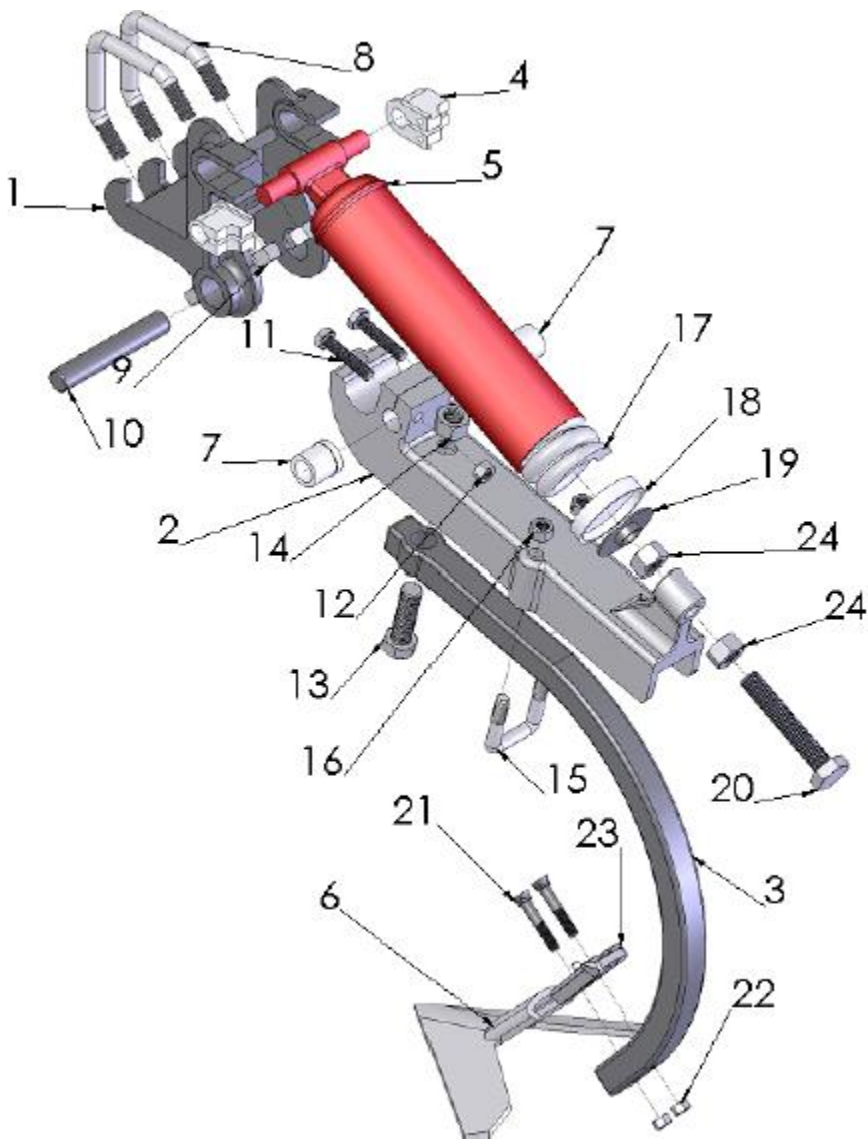
SCALE 1:20

REVISION:

INITIAL: TW



improving farm productivity



SWB138 – Narrow Point - option



improving farm productivity

Spring tine continued

Item	Part No.	Description	Quantity per leg	Quantity/3m machine	Quantity/5m machine	Quantity/6m machine
1	SWB111	Box clamp	1	14	18	22
2	SWB112	Radius arm	1	14	18	22
3	SWB113	Leg	1	14	18	22
4	SWB114	Top bush	2	28	36	44
5	SWB115	Spring cover	1	14	18	22
6	SWB116	Wide knock-on point	1	14	18	22
	SWB138	Optional Narrow knock-on point (not shown)	1	14	18	22
7	SWB117	Bottom top hat bush	2	28	36	44
8	SWM20100wa	Wrap around M20 x 100 bolt	2	28	36	44
9	SWM20003	M20 plain nut	4	56	72	88
10	SWB124	28 x 170 straight pin	1	14	18	22
11	SWM1470	M14 x 70 bolt	2	28	36	44
12	SWM14003	M14 plain nut	2	28	36	44
13	SWM2480	M24 x 80 bolt	1	14	18	22
14	SWM24004	M24 Nylock nut	1	14	18	22
15	SWM1650ub	M16 x 50 U-bolt	1	14	18	22
16	SWM16004	M16 Nylock nut	2	28	36	44
17	SWB118	Spring	1	14	18	22
18	SWB119	Spring push nylon pad	1	14	18	22
19	SWB120	Compression bolt contact plate	1	14	18	22
20	SWM24140	M24 x 140 bolt	1	14	18	22
21	SWM1265cntsk	Cntsk M12 x 65 bolt	2	28	36	44
22	SWM12003	M12 nut	2	28	36	44
23	SWB110	Bourgault knock on base	1	14	18	22
24	SWM24003	M24 nut	2	28	36	44



improving farm productivity



SWB442 marker disc

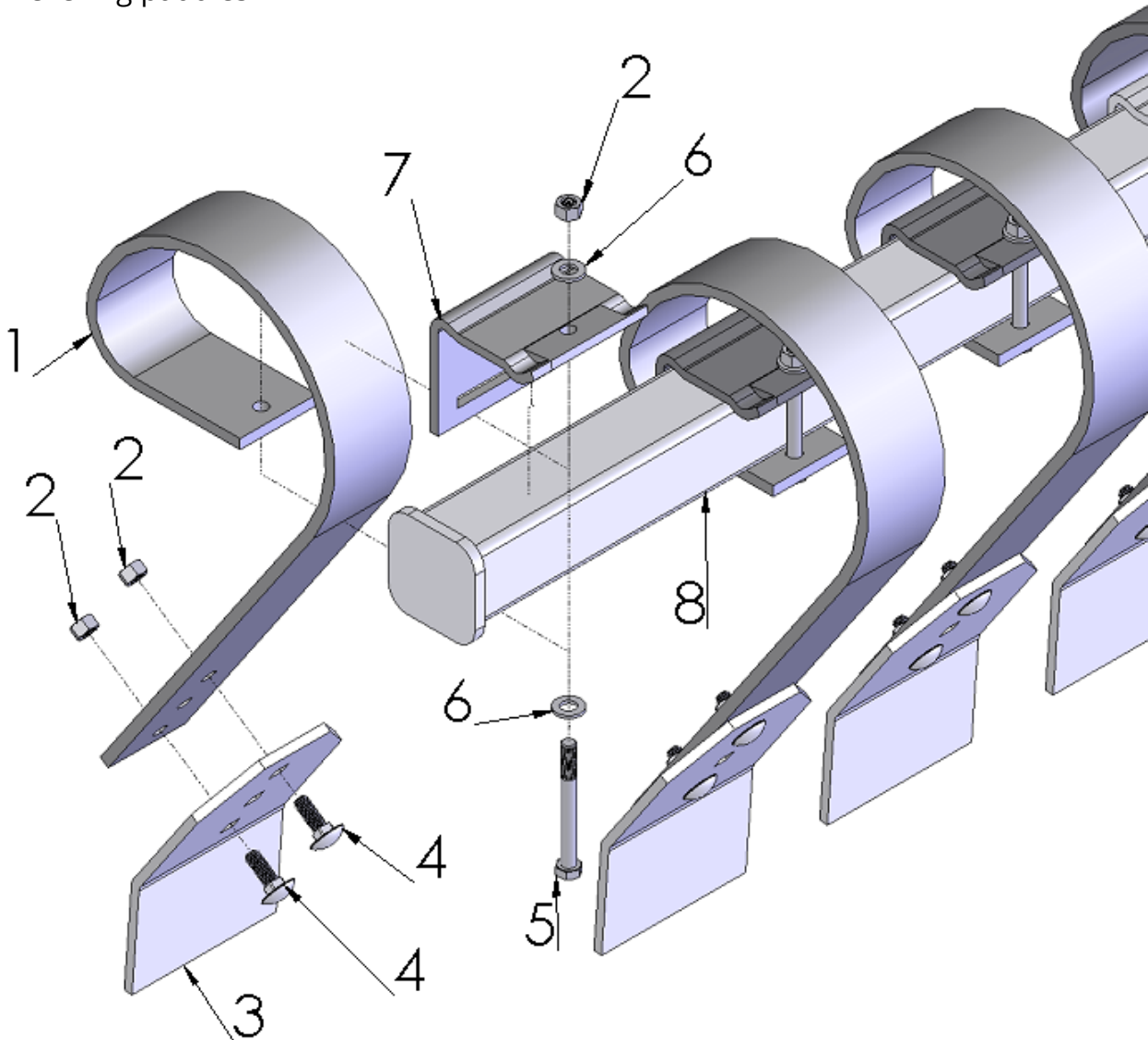


SWB399 - Marker disc bearing



improving farm productivity

Levelling paddles



Item	Part No.	Description	Quantity/3m machine	Quantity/5m machine	Quantity/6m machine
1	SWB121	Paddle spring	19	23	29
2	SWM12004	M12 Nylock nut	57	69	87
3	SWB122	Paddle plate	19	23	29
4	SWM1235chsqa	M12 x 35 cuphead square bolt	38	46	58
5	SWM12110	M12 x 110 bolt	76	92	116
6	SWM12001	M12 flat washer	38	46	58
7	SWB123	Paddle clamp bracket	19	23	29
8	SW148	5.6m Paddle box	N/A	2	N/A
	SW208	4.6m Paddle box (not shown)	2	N/A	N/A
	SW209	6.6m Paddle box (not shown)	N/A	N/A	2



improving farm productivity



SWH113 - 703/1
Levelling paddles

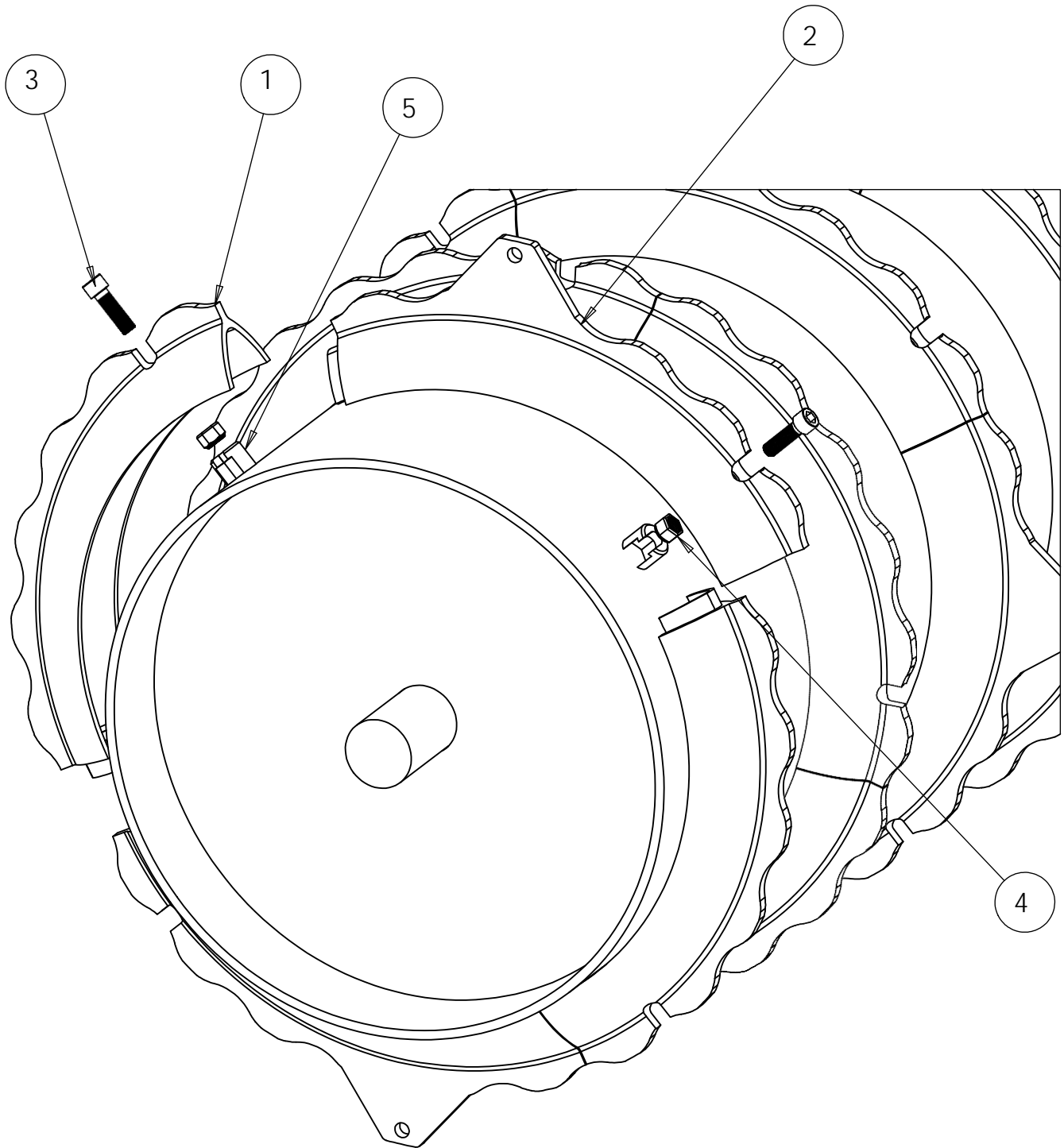


SWH125 - 703/2
Drawbar ram



SWH132 - 706/4
wing ram

8.4 Packer Quadrant Assembly



ITEM NO.	PART NO.	DESCRIPTION	QTY.
1	SWB331	Non-Lugged Packed Quadrant	24
2	SWB390	Lugged Packer Quadrant	24
3	SWM1240CH	M12 x 40 Cap Head	48
4	SWM12004	M12 Nylock Nut	48
5	SWB477	508 Packer Base	48

DO NOT SCALE DRAWING

MACHINE/COMPONENT:
TITLE:

Packer Quadrant Assembly



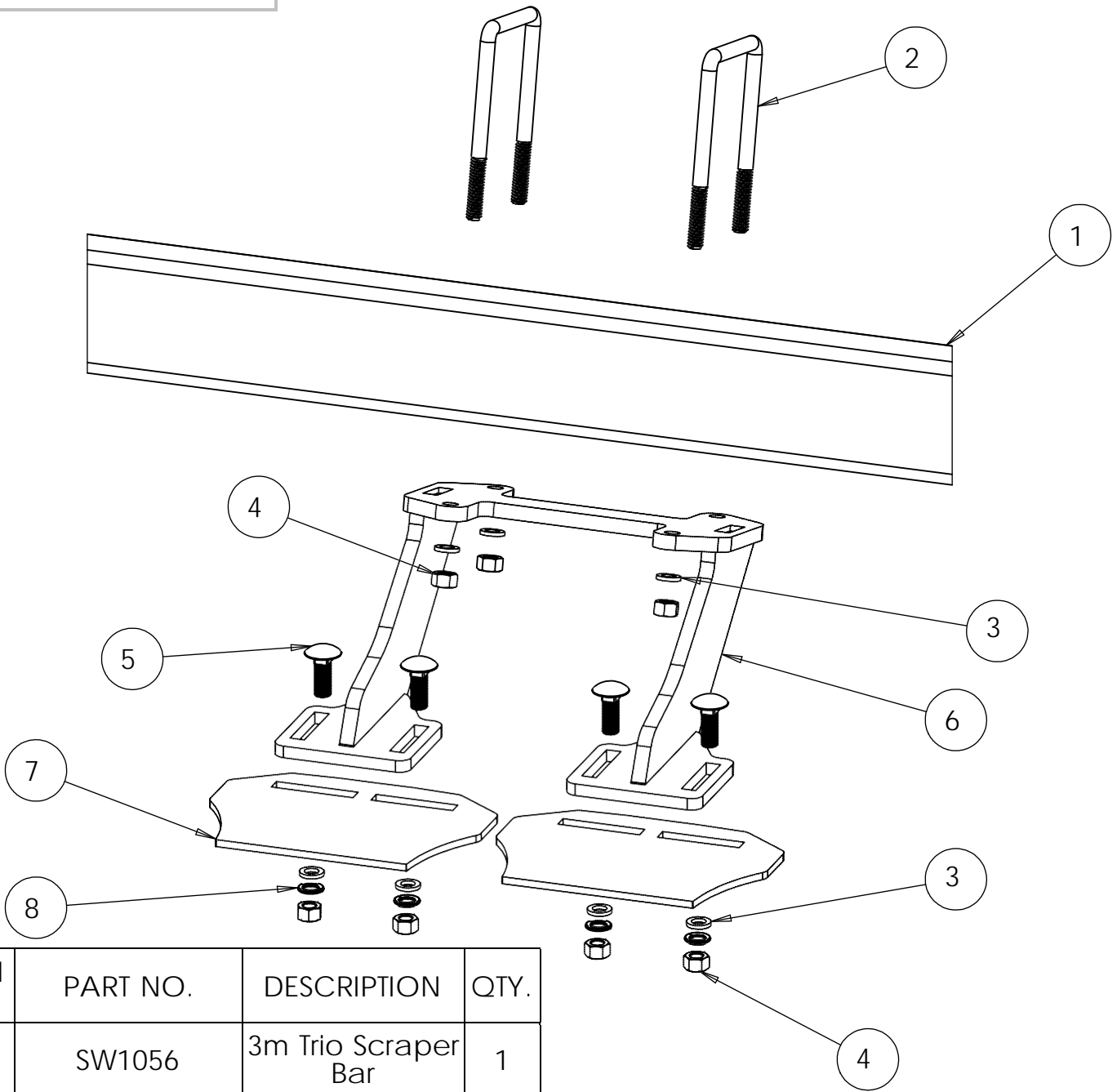
Drawings and design information found herein remain the sole property of Sumo UK Ltd. Reproductions may only be made with the permission of the owner.

SCALE 1:5

REVISION:

INITIAL: TW

8.6 Scraper Assembly



ITEM NO.	PART NO.	DESCRIPTION	QTY.
1	SW1056	3m Trio Scraper Bar	1
2	SWM12100ub	M12 x 100 U-Bolt	2
3	SWM12001	M12 Washer	8
4	SWM12004	M12 Nylock Nut	8
5	SWM1235CHSQ	M12 x 35 Cup Head Square Bolt	4
6	SW1044	Double Scraper Hanger	1
7	SW1043	Scraper	2
8	SWM12002	M12 Spring Washer	4
9	SW1045	Triple Scraper Hanger (not shown)	1
10	SW1055	2.5m Scraper Bar (not shown)	1

DO NOT SCALE DRAWING

MACHINE/COMPONENT:

TITLE:

Scraper Assembly



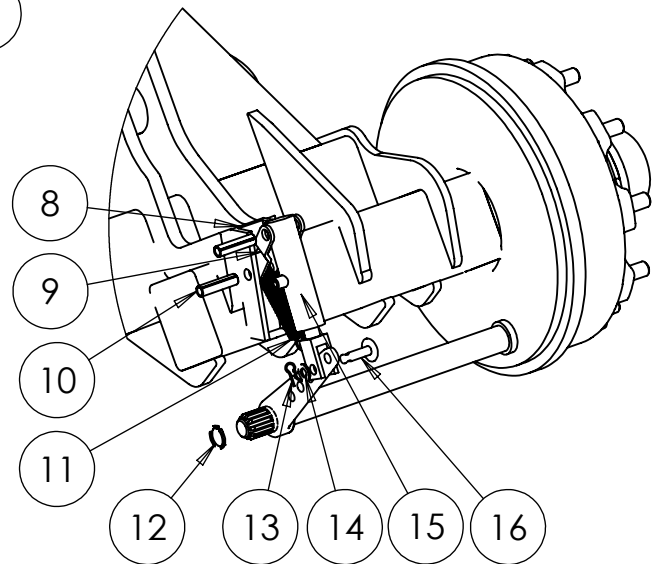
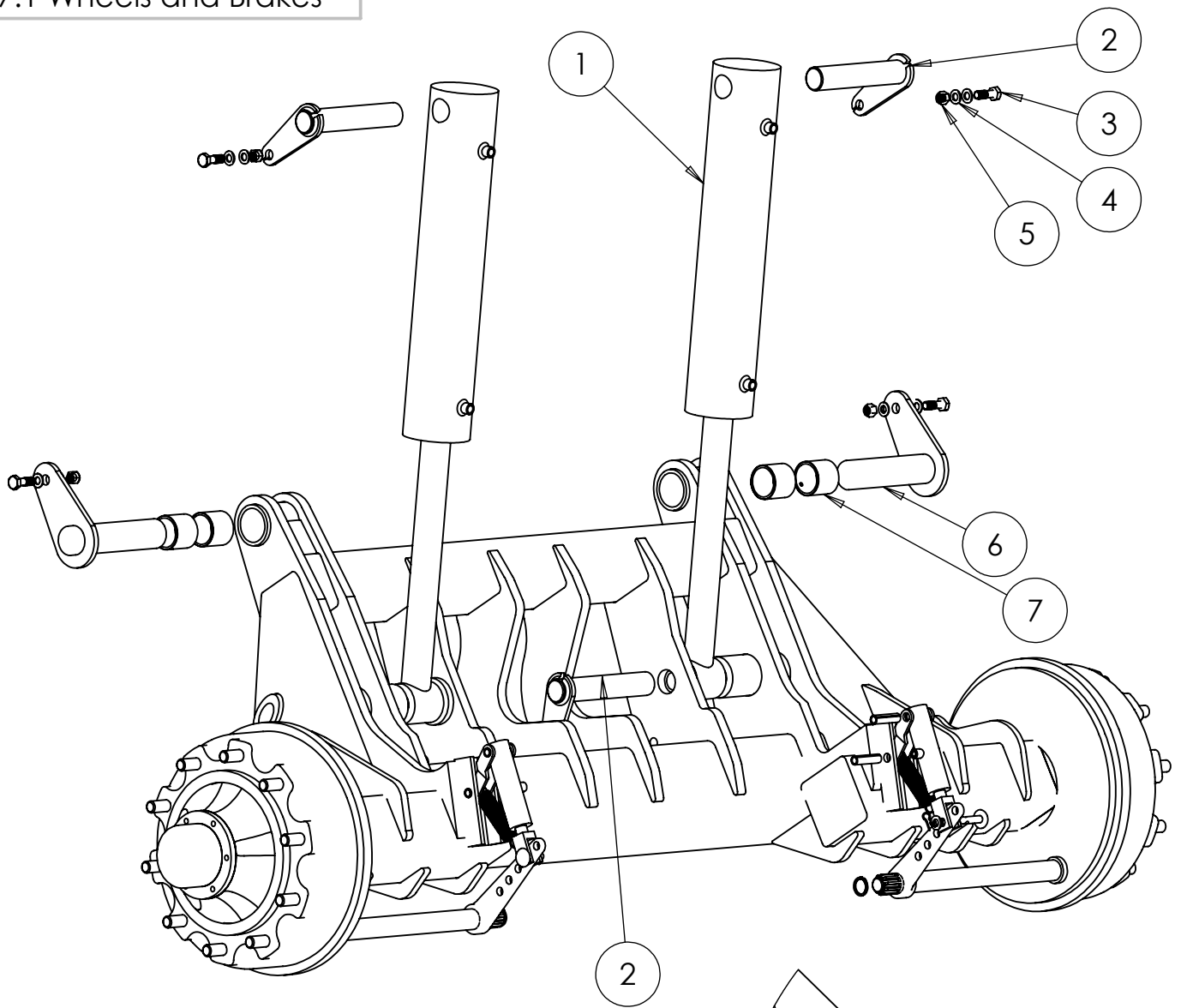
Drawings and design information found herein remain the sole property of Sumo UK Ltd. Reproductions may only be made with the permission of the owner.

SCALE 1:5

REVISION:

INITIAL: TW

7.1 Wheels and Brakes



ITEM:	PART NO:	DESCRIPTION:
1	SWH430	706-4 Ram
2	SW1337	40 x 205 Tabbed pin
3	SWM1250	M12 X 50 Bolt
4	SWM12001	M12 Flat washer
5	SWM12004	M12 Nylock nut
6	SW1338	40 X 190 Tabbed pin
7	SW1339	50 X 58 X 50 Oilite bush
8	SWB194	Ram mount base
9	SWB192	Ram mount /adjuster
10	SWB191	14 X 60 Roll pin
11	SWB195	Spring and clip
12	SWB193	Circlip
13	SWB190	Small R-clip
14	SWM12001	M12 Flat washer
15	SWB134	Brake ram
16	SWB188	12mm Clevis pin
	SWB571	710 x 26.5 Rim
	SWB572	710 x 45 x 26.5 tyre
	SWB573	Rim and tyre complete unit

DO NOT SCALE DRAWING

MACHINE/COMPONENT:

TITLE:

6m Wheels and Brakes

Drawings and design information found herein remain the sole property of Sumo UK Ltd. Reproductions may only be made with the permission of the owner.

REVISION:

DATE:

INITIAL: TW



Images are indicative for reference only and are subject to change without prior consent.

improving farm productivity